



# BOS PATRIOT

## DP 2 | PSV

**Class Notation: LR X 100 A1 Offshore Supply Ship, Firefighting, IWS, ECO, LMC, UMS, DPA.**

### Main Particulars

|               |             |
|---------------|-------------|
| Vessel Name   | BOS Patriot |
| Flag          | Luxembourg  |
| IMO Number    | 9742091     |
| Call Sign     | LXAE7       |
| Year Built    | 2018        |
| Maximum Speed | 13 Knots    |

### Dimensions

|                               |          |
|-------------------------------|----------|
| Overall Length                | 83.40 m  |
| Length between Perpendiculars | 79.55 m  |
| Breadth Moulded               | 18.00 m  |
| Depth from Main Deck          | 8 m      |
| Max Draught                   | 6.70 m   |
| Design Draught                | 6.00 m   |
| Freeboard at Max Draught      | 13.10 mm |
| Clear Deck Space              | 850 m2   |

### Capacities & Tonnage

|                           |                    |
|---------------------------|--------------------|
| Fuel Oil                  | 843 m3*            |
| Fresh Water               | 695 m3             |
| Mud/Brine                 | 1,012 m3*          |
| Base Oil                  | 257 m3*            |
| Ballast/Drill Water       | 1,666 m3           |
| Dry Bulk                  | 260 m3             |
| Deck Strength             | 10 t/m2 aft of #35 |
| Deadweight at max draught | 4,200 T            |
| Gross/Net Tonnage         | 3,638 T / 1,295 T  |

### Discharge Rates

|                          |                      |
|--------------------------|----------------------|
| Fuel Oil Cargo Pump      | 200 m3/h @ 90 m head |
| Fresh Water Pump         | 200 m3/h @ 90 m head |
| Mud/Brine Pump           | 75m3/h @18 Bar head  |
| Ballast/Drill Water Pump | 200 m3/h @90 m head  |

### Accommodation

|                     |                                 |
|---------------------|---------------------------------|
| Total pax + crew    | 26 persons                      |
| Crew compliment     | 14 persons (14 single cabins)   |
| Charterer Personnel | 12 passengers (6 double cabins) |

### Machinery

|                      |  |
|----------------------|--|
| Main Generators      | 2 x 2,186 BHP Diesel Electric<br>2 x 1,328 BHP Diesel Electric |
| Auxiliary Generators |  |
| Emergency Generators | 130 kW   |
| Azimuth Thrusters    | 2 x 1,600 Kw   |
| Bow Thrusters        | 2 x 1,179 BHP  |

### Deck Machinery

|                        |                    |
|------------------------|--------------------|
| Deck Cranes            | 3 t SWL @ 18 m     |
| Tugger Winches         | 2 x 10 t @ 35m/min |
| Windlass/Mooring Winch | 1 x 10t (100Kn)    |
| Chain Stoppers         | BHF 300 KN         |
| Capstan                | 2 x 10 t @30m/min  |

### Dynamic Positioning System

|                |                                  |
|----------------|----------------------------------|
| DP Class       | DP2                              |
| System         | Kongsberg K-Pos DP2              |
| Software Modes | 8.2.3.6                          |
| References     | 2 x DGPS, 1 x Radius, 1 x Cyscan |

Automatic Identification System (AIS) AIS JHS-183

### Fire Fighting

|                     |                 |
|---------------------|-----------------|
| Fire Fighting Class | Class 1         |
| Pumps               | 3,820 m3 per hr |

Monitors 2 x 1,200 m3 per hr > 120 m

### Dimensions

|             |                                       |
|-------------|---------------------------------------|
| Life Rafts  | 2 x 20 man and 1 x 6 man on each side |
| Rescue Boat | 1 x 6 man MOB boat                    |

### Navigation Equipment

|                              |                                    |                             |
|------------------------------|------------------------------------|-----------------------------|
| Radar no. 1                  | 1 x X-Band radar:                  | JRC JMA-9122-9XA            |
| Radar no. 2                  | 1 x S-Band radar:                  | JMC JMA-9132-SA             |
| Radar transponder unit (9G): |                                    | 2 x Mc Murdo S4             |
| DGPS:                        |                                    | 1 x JRC JAN-901B-FOR        |
| Eco sounder:                 |                                    | 1 x JRC JFE-680             |
| Auto pilot:                  | 1 x YOKOGAWA PT500A-P-Analog       |                             |
| Gyro compass:                | 1 x YOKOGAWA CMZ900d + 1 x900S     |                             |
| Magnetic Compass:            |                                    | 1 x YOKOGAWA SR-165         |
| Joystick control:            |                                    | Integrated joystick control |
| ECDIS:                       | 1 x JRC Navi-Sailor 4000 ECDIS MFD |                             |
| VDR:                         |                                    | 1 x JRC JCY-1800            |

### Communication Equipment

|                     |                                      |
|---------------------|--------------------------------------|
| MF / HF radio:      | JRC JSS-2150                         |
| VHF Radio:          | JRC JHS-770S                         |
| Portable VHF Radio: | 3 x Entel HT8982                     |
| Satellite EPIRB:    | 2 x Mc -Murdo S4                     |
| Inmarsat:           | 1 Inmarsat-C SSAS, 1 Inmarsat-C LIRT |
| Navtex receiver:    | JRC NCR-333                          |
| SART                | 2 x Mc Murdo S4                      |

Fleet broad band: 1 x JRC Navi-Sailor 4000 ECDIS MFD  
Weather facsimile 1 x JRC JAX-9B

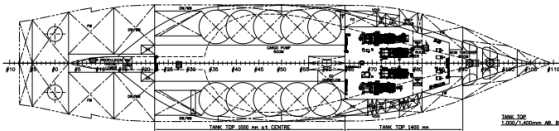
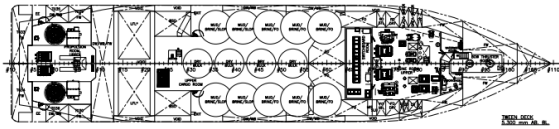
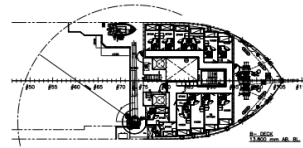
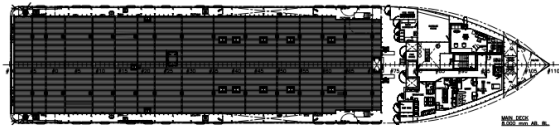
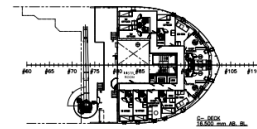
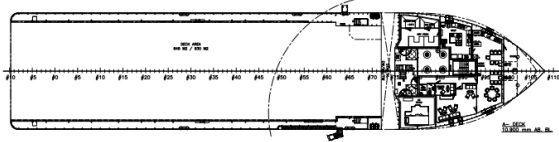
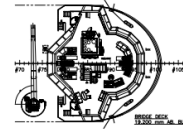
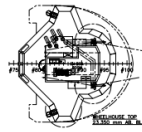
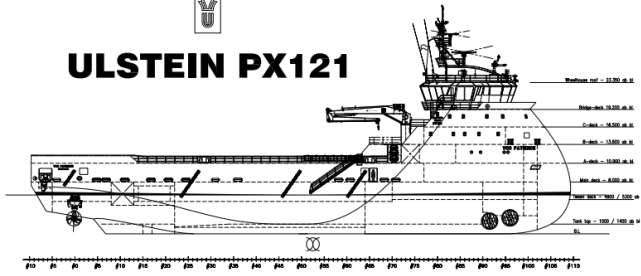
### Fuel Consumption

|   |             |
|---|-------------|
| Fuel consumption at 13 knots                    | 15.5 mt/day |
| Fuel consumption at 10 knots                    | 7 mt/day    |
| DP mode   | 4 mt/day    |
| In port   | 1 mt/day    |
| Fuel type ISO 8217: 2005 DMA or later revisions |             |

\*Tank capacity can differ pending set up offered upon request



# ULSTEIN PX121



**PRINCIPAL DIMENSIONS:**  
 L.O.A. .... APPROX.: 83.3 m  
 L.F.P. (Design) ..... 76.5 m  
 L.F. (DNV Pl.3 Ch.1 Sec.1L) 79.6 m  
 BREADTH MOULDED ..... 18.0 m  
 DEPTH TO MAIN DECK ..... 8.0 m  
 MAX. DRAUGHT (SLW) ..... 6.7 m  
 DESIGN DRAUGHT ..... 6.0 m

FLAG: Dutch

| NO.  | REVISION                | DATE       | BY               | CHKD.            | APPD.            |
|------|-------------------------|------------|------------------|------------------|------------------|
| 1.0  | ISSUED FOR CONSTRUCTION | 2014-08-15 | J. VAN DER WOUDE | P. VAN DER WOUDE | P. VAN DER WOUDE |
| 2.0  | REVISION                | 2014-08-15 | J. VAN DER WOUDE | P. VAN DER WOUDE | P. VAN DER WOUDE |
| 3.0  | REVISION                | 2014-08-15 | J. VAN DER WOUDE | P. VAN DER WOUDE | P. VAN DER WOUDE |
| 4.0  | REVISION                | 2014-08-15 | J. VAN DER WOUDE | P. VAN DER WOUDE | P. VAN DER WOUDE |
| 5.0  | REVISION                | 2014-08-15 | J. VAN DER WOUDE | P. VAN DER WOUDE | P. VAN DER WOUDE |
| 6.0  | REVISION                | 2014-08-15 | J. VAN DER WOUDE | P. VAN DER WOUDE | P. VAN DER WOUDE |
| 7.0  | REVISION                | 2014-08-15 | J. VAN DER WOUDE | P. VAN DER WOUDE | P. VAN DER WOUDE |
| 8.0  | REVISION                | 2014-08-15 | J. VAN DER WOUDE | P. VAN DER WOUDE | P. VAN DER WOUDE |
| 9.0  | REVISION                | 2014-08-15 | J. VAN DER WOUDE | P. VAN DER WOUDE | P. VAN DER WOUDE |
| 10.0 | REVISION                | 2014-08-15 | J. VAN DER WOUDE | P. VAN DER WOUDE | P. VAN DER WOUDE |