



BOS PRINCESS

80m | DP 2 | PSV

Class Notation: +100 A1 AHTS, Fire-Fighting Ship 1 (2400 m3/h) with water spray, HNLS, Oil Recovery, *IWS, WDL (7t/m2 from Aft to Frame 71), ECO(TOC)
+LMC, UMS, DP(AA)
Shipright (IHM-EU+)

Main Particulars

Vessel Name	BOS Princess
Flag	Singapore
IMO Number	9720732
Call Sign	TBA
Year Built	2015
Gross Tonnage	3,548T
Net Tonnage	1,196T

Dimensions

Length Overall	80.00m
Length between Perpendicular	72.38m
Breadth Moulded	18.40m
Depth from Main Deck	7.80m
Max Draught	6.35m
Design Draught	6.00m
Freeboard at Max Draught	1.45m
Clear Deck Space	750m ²

Capacities & Tonnage

Fuel Oil Cargo	860m ³
Fresh Water	730m ³
Mud/Brine	816m ³
Ballast/Drill Water	1,720m ³
Dry Bulk	226m ³ (4 x 2000cuf)
Deck Strength	7T/m ²
Deadweight at max draught	3,800T
Foam	27m ³
Detergent	27m ³
Fresh Water Maker	2 x 10T per day

Discharge Rates

Fuel Oil Cargo Pump	150m ³ /hr @ 80m head
Fresh Water Pump	150m ³ /hr @ 80m head
Mud/Brine Pump	2 x 75m ³ /hr @ 80m head
Ballast/Drill Water Pump	100m ³ /hr @ 80m head
Dry Bulk	40m ³ /h

Machinery

Main Engines	2 x MAK 2400 KW
Main Generators	3 x 500KW diesel driven
Propulsion System	Twin CPP rudder azimuth thrusters 6500BHP
Emergency Generators	1 x 95KW diesel driven
Shaft Generator	2 x Leroy Somer 1230KW ME driven
Bow Thrusters	2 x 12 tons (800KW), electric driven

Deck Machinery

Deck Cranes	3 tonnes SWL @ 10m
Tugger Winches	2 x 10 tonnes @ 24m/min
Windlass/Mooring Winch	2 x 13 tonnes @ 18/min
Capstan	2 x 10 tonnes @ 25m/min

Dynamic Positioning System

DP Class	Class 2
System	Kongsberg K-Pos DP21
References	DGNSS 1 - Kongsberg DPS112 DGNSS 2 - Kongsberg DPS110 LASER - Guidance Marine CyScan MK4

Fire Fighting

Fire Fighting Class	Fifi - 1
Pumps	3000 m3 per hr
Monitors	2 x 1200 m3 per hr
Throw x Height	120 m x 45 m

Life Saving

Liferafts	6 x 25 men and 2 x 15 men
Rescue Boat	1 x 6 men with 25HP OBM

Navigation Equipment

Radar No. 1	Furuno FAR-2117-D, X-Band
Radar No. 2	Furuno FAR-2137S-D, S-Band
GPS	2 x Furuno, GP-150
Echo Sounder	Furuno, FE-700
Auto Pilot	Anschutz PilotStar D
Gyro Compass	3 x Anschutz Gyro
Magnetic Compass	Anschutz Magnetic Standard 22

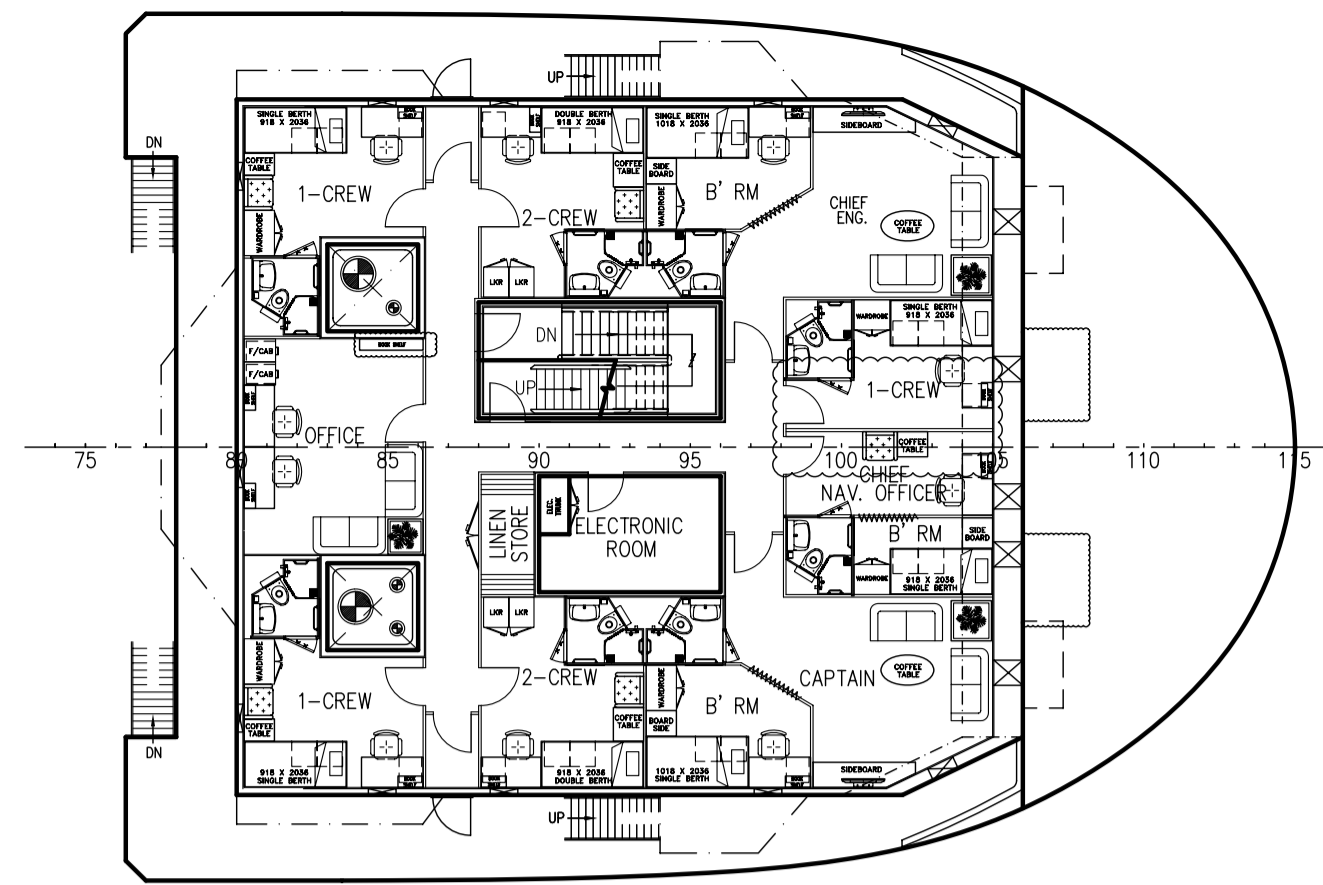
Communication Equipment

HF radio	Furuno Model RC-1800T
VHF Radio	Furuno FM-8800S
Portable VHF Radio	3 x McMurdo Model R2 GMDSS
Satellite EPIRB	McMurdo Model SMARTFIND E5
Inmarsat	Inmarsat-C with EGC
Navtex Receiver	Furuno NX-700A (GMDSS)
SART	2 x McMurdo S4 Rescue SART
Automatic Identification System (AIS)	Furuno FA-150

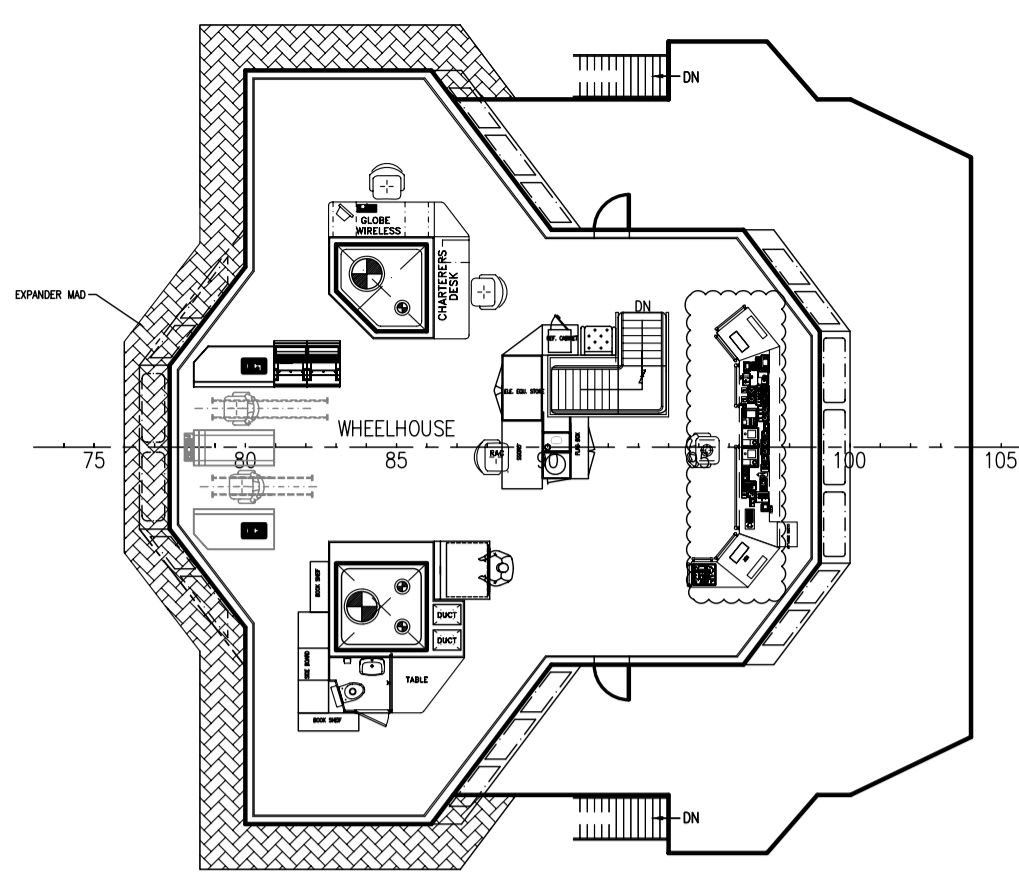
Accommodation

1-man x 12	12 men
2-men x 20	40 men
Total	52 men

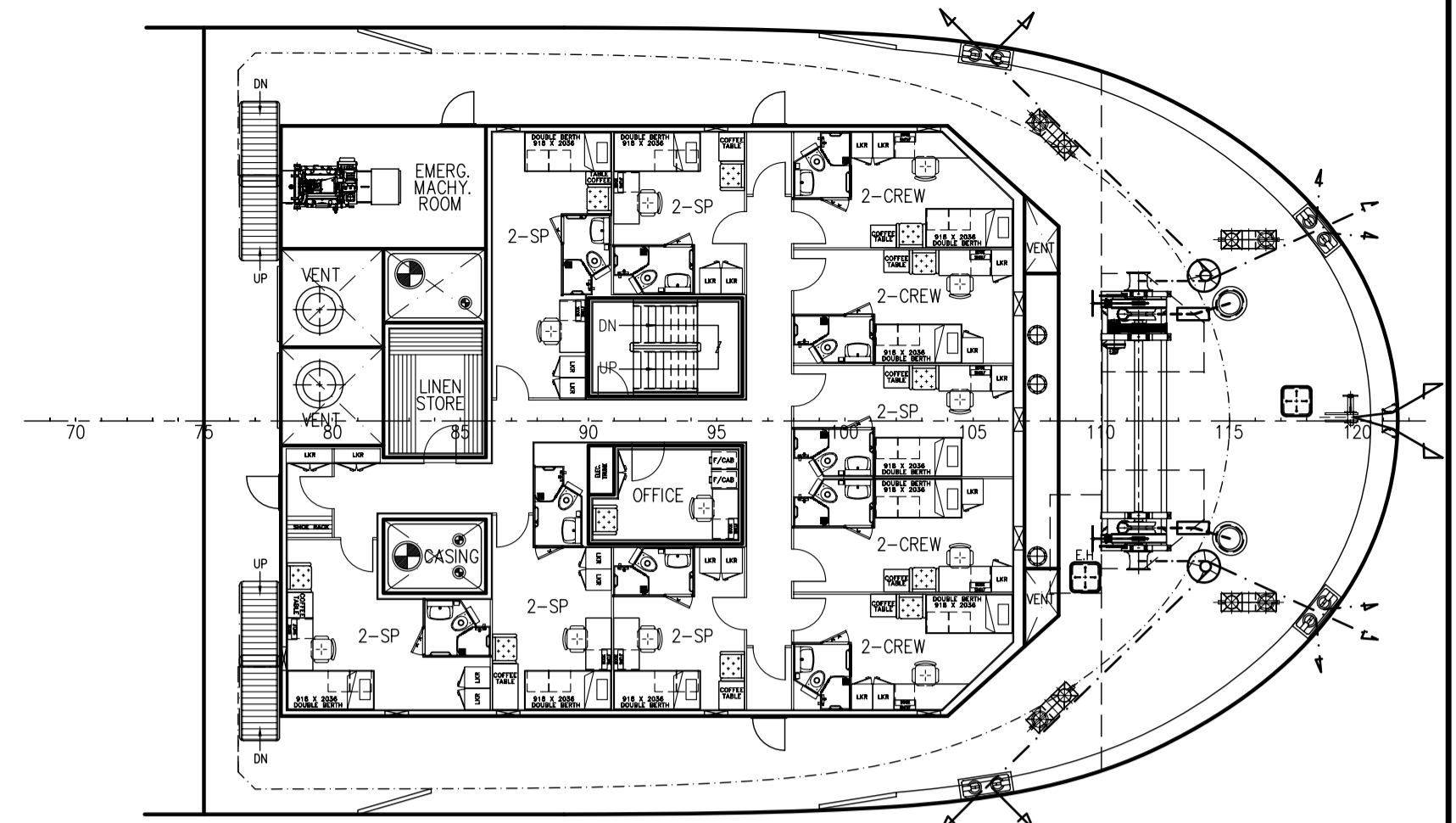
KC-35HL PSV



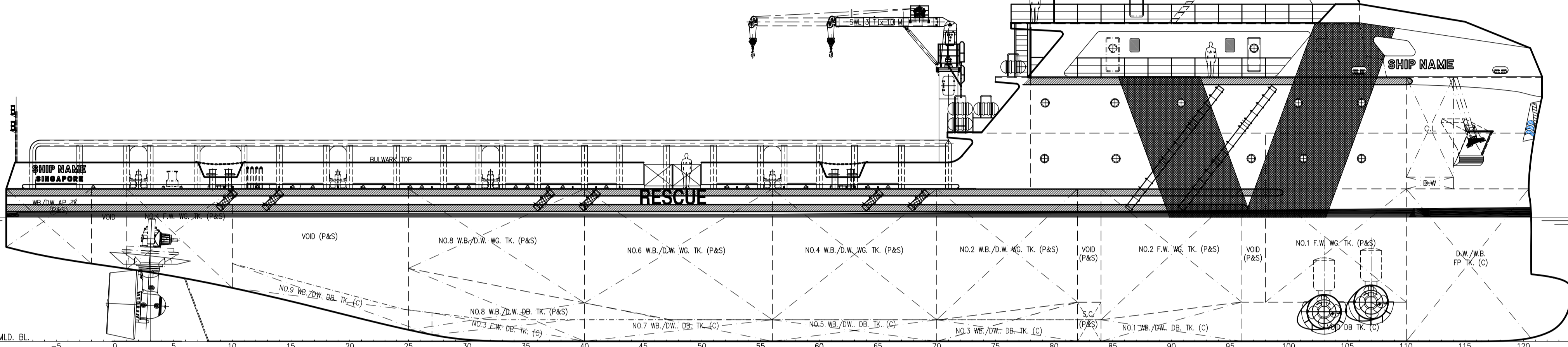
OFFICER DECK



NAV. BRIDGE DECK



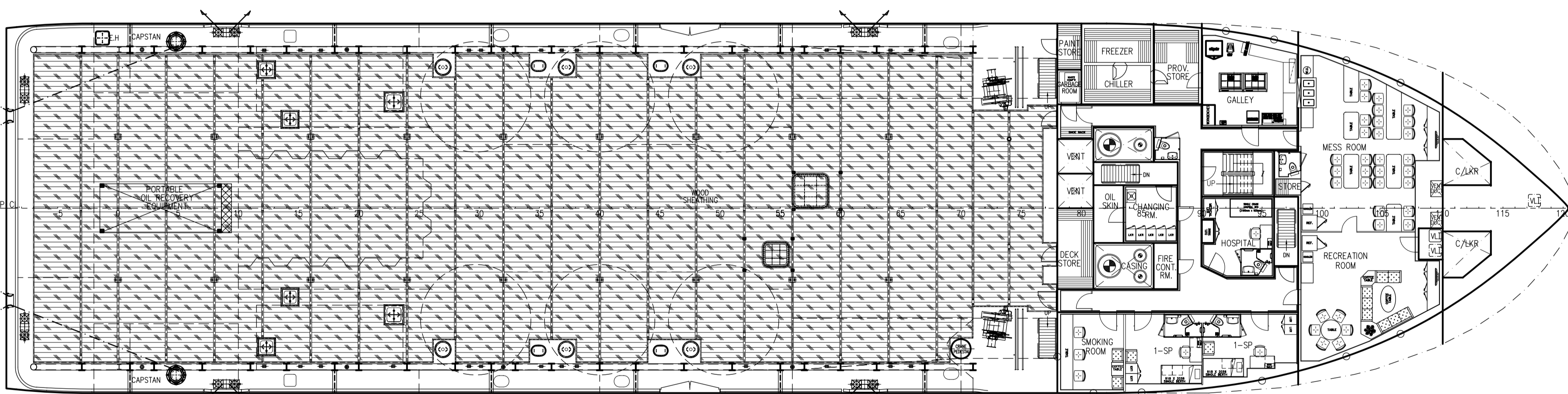
UPPER FORECASTLE DECK PLAN



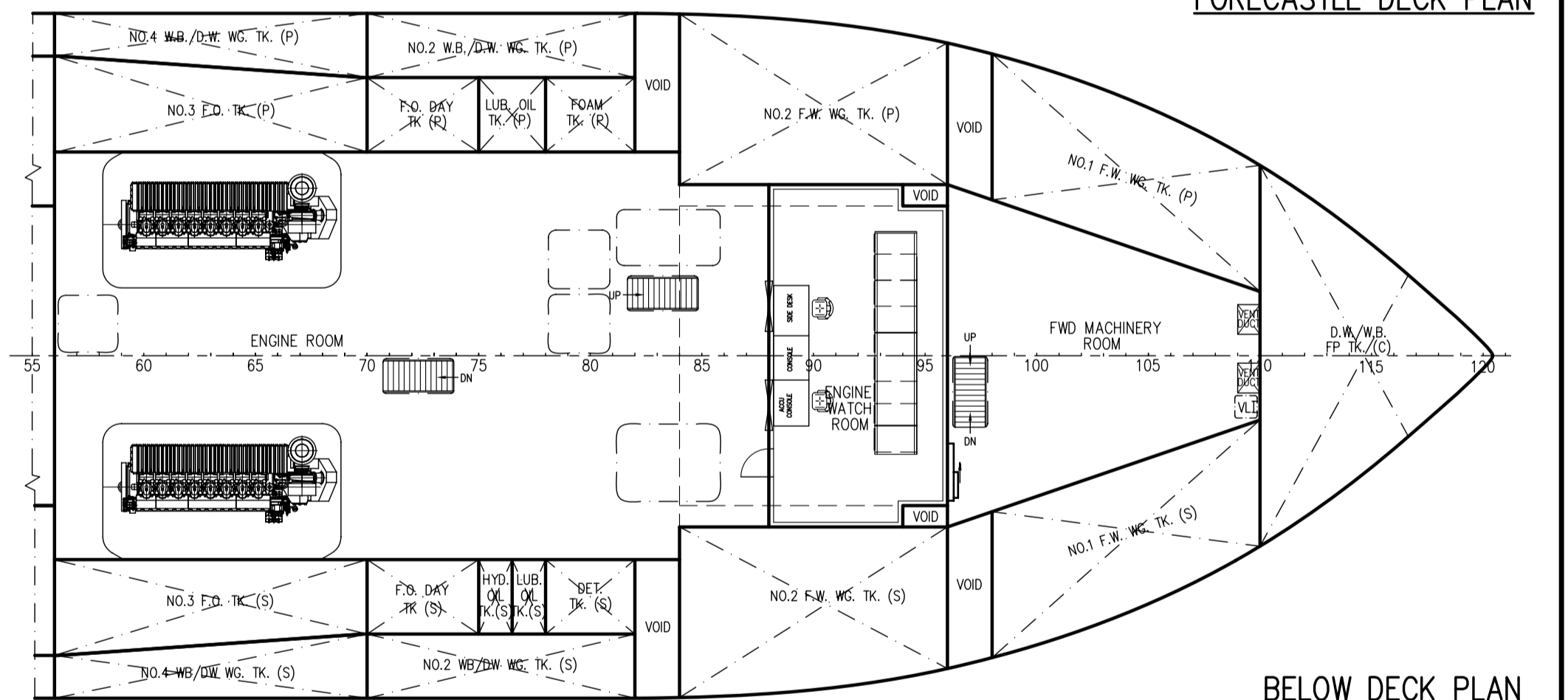
OUTBOARD PROFILE



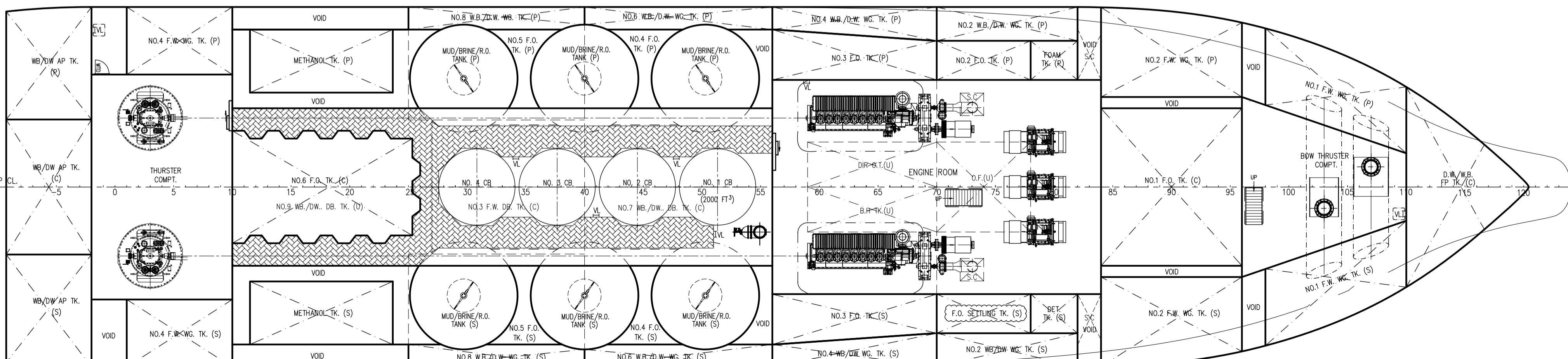
FORECASTLE DECK PLAN



MAIN DECK PLAN



BELOW DECK PLAN



BELOW DECK PLAN

PRINCIPAL DIMENSIONS

LENGTH (O.A.)	80.00 M
LENGTH (W.L.)	77.95 M
LENGTH (B.P.)	72.38 M
BEAM (M.L.D.)	18.40 M
DEPTH (M.L.D.)	7.80 M
MAX. DRAFT (M.L.D.)	6.35 M
TOTAL DWT	3750 TONS
FUEL OIL	850 M ³
FRESH WATER	550 M ³
MUD/BRINE/R.O.	750 M ³
METHANOL	200 M ³
CLEAR DECK AREA	750 M ²
DECK CARGO (DECK LOADING = 5.5T/M ²)	1500 TONS
DRY BULK TANKS (4x2000 FT ³ = 8000 FT ³)	226 M ³
MAIN PROPULSION	2 X 2400 KW
SPEED (TRIALS)	13.0 KNOTS
COMPLEMENT	34 MEN
CREW	18 MEN
SPECIAL PERSONNEL	34 MEN
PASSENGER	6 MEN

THIS DOCUMENT AND THE INFORMATION IT CONTAINS IS COPYRIGHT AND REMAINS THE PROPERTY OF KHAM CHUAN MARINE PTE. LTD. IT IS NOT TO BE COPIED IN WHOLE OR IN PART OR DISCLOSED TO ANY THIRD PARTY FOR ANY PURPOSE WHATSOEVER WITHOUT PRIOR WRITTEN CONSENT.

REV.	DESCRIPTION	BY	DATE
3	FI-FI MONITOR RELOCATED, LOA AMENDED AS 80M		YUMINGYE 14.04.14
2	UPDATED AS STRUCTURAL DRAWINGS		YUMINGYE 04.12.13
1	GARBAGE ROOM ADDED, LINES UPDATED, TWEEN DECK LADDER MOVED		YUMINGYE 12.08.13
REVISIONS			
FUJIAN SOUTHEAST SHIPBUILDING CO., LTD			
CONSULTANT			
 31, BUKIT BATOK CRESCENT, #01-53, THE SPLENDOR SINGAPORE 658070 Tel+65-67753383 Fax+65-67753788 Email: khiamchuan@kcm.com.sg			
PROJECT			
80m PLATFORM SUPPLY VESSEL			
TITLE			
GENERAL ARRANGEMENT			
CLASSIFICATION		HULL NO.	
		DN78M-3/4/5/6/7/8	
DRAWN	CHECKED	SCALE	DRAWING NUMBER
YUMINGYE		1:150	KCM/Q692(B)-G1
24-05-13			3