



BRITOIL GUARDIAN

100 T BP | DP2 | AHTS

Class Notations: A1, Offshore Support Vessel (AH, TOW, FFV-1, Supply) (SPS), AMS, ACCU, DPS-2

Additional Notations: BWT, ENVIRO+, UWILD

Main Particulars

Vessel Name	BRITOIL GUARDIAN
Class	ABS
Flag	Singapore
IMO Number	9797280
Call Sign	T2VR5
Year Built	2022
Bollard Pull	100 t
Maximum Draft	5.5 m
Deadweight	1,826 t

Dimensions

Length	69.90 m
Breadth Moulded	16.90 m
Depth Moulded	7.00 m

Performance

Maximum Speed	13.5 knots
Economical Speed	10.0 knots

Capacities

Fuel	752 m ³
Ballast/ Drill	980 m ³
Fresh Water	585 m ³
Fuel Oil (Ship)	350 m ³
Fuel Oil (Cargo)	400 m ³
Mud/ Recovery Oil	410 m ³

Cargo Deck

Clear Deck Area	358 m ²
Deck Cargo Capacity	750 t
Deck Strength	7.0 t/m ²

Discharge Rates

Fresh Water Pump	100 m ³ /hr @ 70 m head
Cargo Oil Pump	150 m ³ /hr @ 70 m head
Ballast/Drill Pump	150 m ³ /hr @ 70 m head
Mud Pump	100 m ³ /hr @ 15 bar
Fuel Oil Transfer Pump	15 m ³ /hr @ 30 m head
Bilge Pump	45 m ³ /hr @ 30 m head
Fire Pump	35 m ³ /hr @ 45 m head

Dynamic Positioning System

DP Class	DP2
System	Kongsberg K-POS DP-21
References	3 x Gyro; 2 x DGPS; 1 x Cyscan

Fire Fighting

Fire Fighting Class	FiFi I
Pumps	2 x 1730 m ³ /hr
Monitors	2 x 1200 m ³ /hr
Water Curtain	1 set
Dispersant System	2 x 6 m Spray Boom

Accommodation

1-man Bunk	8 men
2-man Bunk	12 men
Accommodation	20 men (60 w/ SPS cert)
Rescue	25 men

Rescue

Rescue Boat	6 men FRC
Rescue Boat Davit	SOLAS approved

Radio & Navigation Equipment

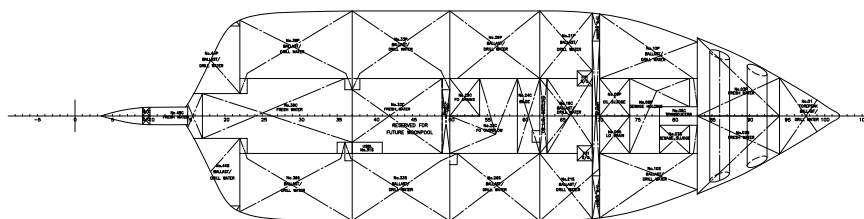
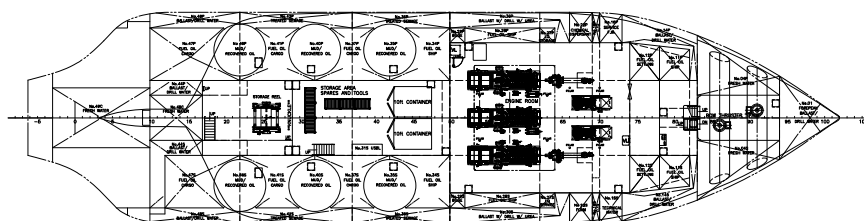
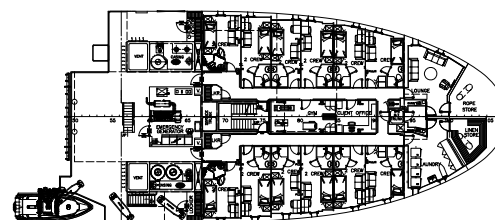
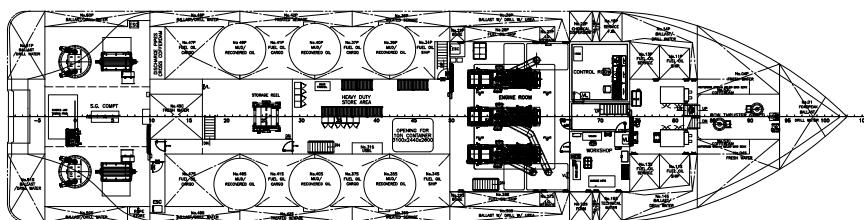
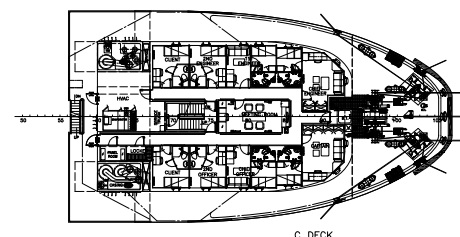
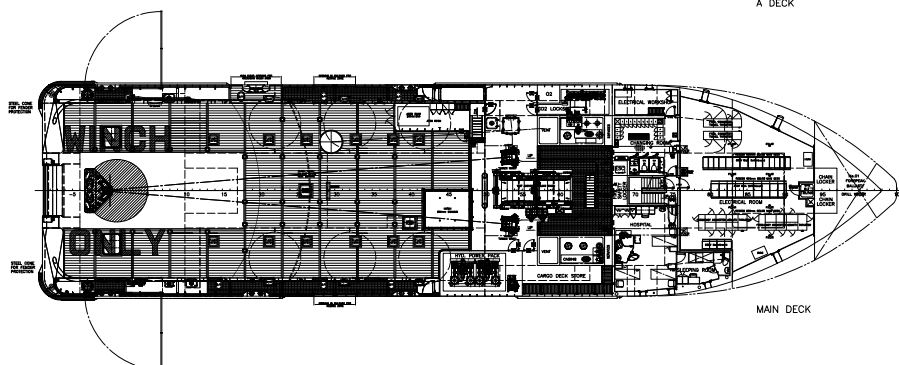
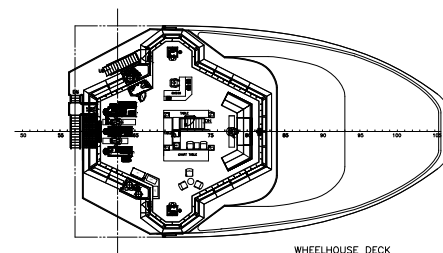
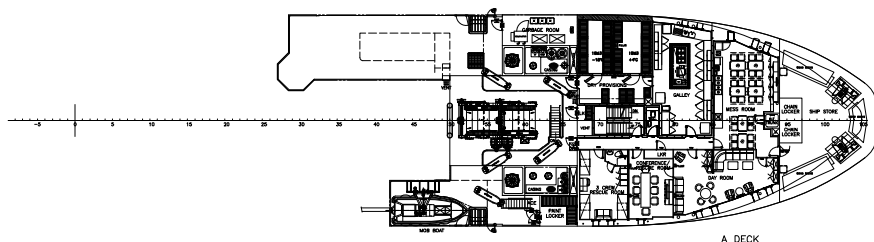
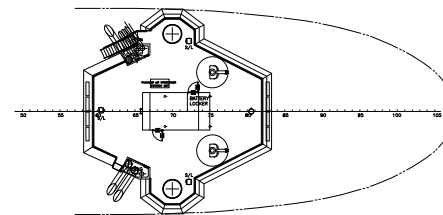
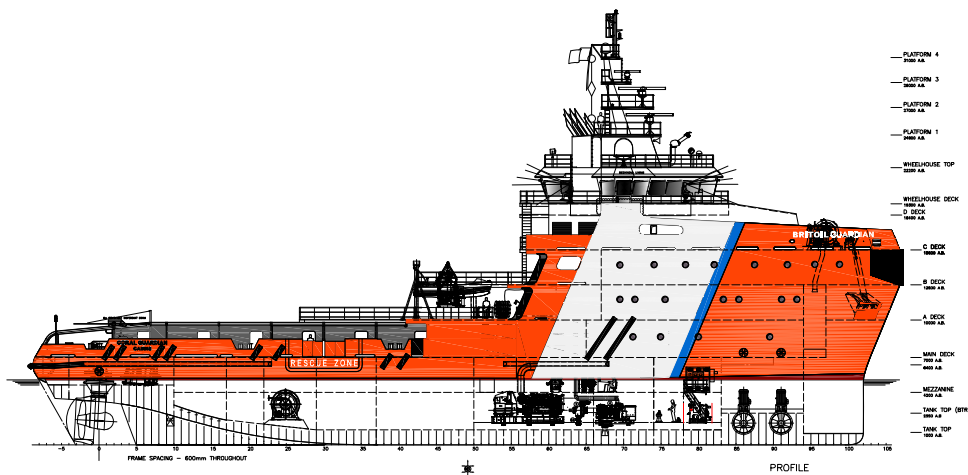
Radar	1 x FAR 2817 & 1 x FAR-2837S
ECDIS	2 x FMD-3000
VDR	1 x VR7000
Oil Spill Radar	Foil 200
BNWAS	BR-500
VHF, MF/HF, SAT C	Conform to GMDSS Area 1, 2 & 3
Inmarsat F	Felcom 500

Machinery

Main Generators	3 x 2100 kW Caterpillar 3516C
Auxiliary Generators	2 x 550 kW Caterpillar C18
Emergency Generator	1 x 110 kW Cummins 6CT8.3-DM
Azimuth Thrusters	2 x 2900 kW Steerprop SP 45D
Bow Thrusters	2 x 560 kW Schottel STT FP

Deck Machinery

Forward Winch/ Windlass	1 x 150T Brake Holding Macgregor
Main Tow Winch	1 x 250T Brake Holding Waterfall Macgregor
Tugger Winch	2 x 10T Macgregor
Capstan	2 x 5T Macgregor
Chain Jaw	1 x 11T Pull
Shark Jaw	1 x 250T Macgregor
Tow Pins	1 x 250T Macgregor
Storage Reel	1 x 1200m x 60dia Macgregor
Deck Crane	6T @ 17 mts TTS
Stern Roller	250T SWL



GENERAL PARTICULARS	
LENGTH O.A. (INCL FENDERS)	69.90 M
LENGTH O.A. (EXCL FENDERS)	69.50 M
RULE LENGTH	64.23 M
BREADTH MLD.	16.90 M
DEPTH MLD. (MAIN DECK)	7.00 M
MAX DRAUGHT (UNDERSIDE SKEG)	5.50 M
SCANTLING DRAUGHT	5.95 M
COMPLEMENT	35 PERSONS
RESCUED	25 PERSONS
TOTAL PERSONS ON BOARD	60 PERSONS

OSD-IMT	
OSD-IMT DUNDRE - UK HEAD OFFICE Unit 36 City Quay Camperdown Street Dundee DD1 3JA info@osd-imt.com www.osd-imt.com Tel: 01332 217 100	
PROJECT	69.9M EMERGENCY TOWING VESSEL
TITLE	GENERAL ARRANGEMENT
BUILDER	GUANGDONG YUEXIN OCEAN ENGINEERING CO., LTD
PROJECT NO.	YX32525
CAD REFERENCE NUMBER	14082 - 101 - 1 -
DATE	1 OF 1
SCALE	1:150