



BRITTOIL GUARDIAN

100 T BP | DP2 | AHTS

Class Notations: A1, Offshore Support Vessel (AH, TOW, FFV-1, Supply) (SPS), AMS, ACCU, DPS-2

Additional Notations: BWT, ENVIRO+, UWILD

Main Particulars

| | |
|---------------|-------------------|
| Vessel Name | BRITTOIL GUARDIAN |
| Class | ABS |
| Flag | Singapore |
| IMO Number | 9797280 |
| Call Sign | T2VR5 |
| Year Built | 2022 |
| Bollard Pull | 100 t |
| Maximum Draft | 5.5 m |
| Deadweight | 1,826 t |

Dimensions

| | |
|-----------------|---------|
| Length | 69.90 m |
| Breadth Moulded | 16.90 m |
| Depth Moulded | 7.00 m |

Performance

| | |
|------------------|------------|
| Maximum Speed | 13.5 knots |
| Economical Speed | 10.0 knots |

Capacities

| | |
|-------------------|--------------------|
| Fuel | 567 MT (90%) |
| Ballast/ Drill | 980 m ³ |
| Fresh Water | 585 m ³ |
| Fuel Oil (Ship) | 350 m ³ |
| Fuel Oil (Cargo) | 400 m ³ |
| Mud/ Recovery Oil | 410 m ³ |

Cargo Deck

| | |
|---------------------|----------------------|
| Clear Deck Area | 358 m ² |
| Deck Cargo Capacity | 750 t |
| Deck Strength | 7.0 t/m ² |

Discharge Rates

| | |
|------------------------|------------------------------------|
| Fresh Water Pump | 100 m ³ /hr @ 70 m head |
| Cargo Oil Pump | 150 m ³ /hr @ 70 m head |
| Ballast/Drill Pump | 150 m ³ /hr @ 70 m head |
| Mud Pump | 100 m ³ /hr @ 15 bar |
| Fuel Oil Transfer Pump | 15 m ³ /hr @ 30 m head |
| Bilge Pump | 45 m ³ /hr @ 30 m head |
| Fire Pump | 35 m ³ /hr @ 45 m head |

Dynamic Positioning System

| | |
|------------|-----------------------------------|
| DP Class | DP2 |
| System | Kongsberg K-POS DP-21 |
| References | 3 x Gyro; 2 x DGPS; 1 x Cyscan |

Fire Fighting

| | |
|---------------------|-----------------------------|
| Fire Fighting Class | Fifi I |
| Pumps | 2 x 1730 m ³ /hr |
| Monitors | 2 x 1200 m ³ /hr |
| Water Curtain | 1 set |
| Dispersant System | 2 x 6 m Spray Boom |

Accommodation

| | |
|---------------|-------------------------|
| 1-man Bunk | 8 men |
| 2-man Bunk | 12 men |
| Accommodation | 20 men (60 w/ SPS cert) |
| Rescue | 25 men |

Rescue

| | |
|-------------------|----------------|
| Rescue Boat | 6 men FRC |
| Rescue Boat Davit | SOLAS approved |

Radio & Navigation Equipment

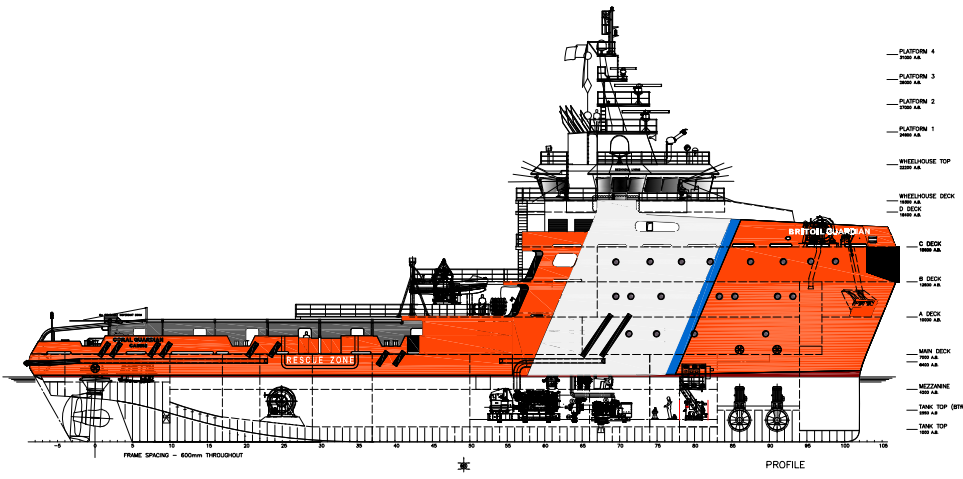
| | |
|-------------------|--------------------------------|
| Radar | 1 x FAR 2817 & 1 x FAR-2837S |
| ECDIS | 2 x FMD-3000 |
| VDR | 1 x VR7000 |
| Oil Spill Radar | Foil 200 |
| BNWAS | BR-500 |
| VHF, MF/HF, SAT C | Conform to GMDSS Area 1, 2 & 3 |
| Inmarsat F | Felcom 500 |

Machinery

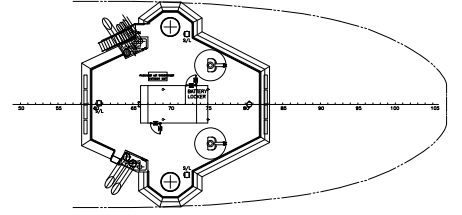
| | |
|----------------------|-------------------------------|
| Main Generators | 3 x 2100 kW Caterpillar 3516C |
| Auxiliary Generators | 2 x 550 kW Caterpillar C18 |
| Emergency Generator | 1 x 110 kW Cummins 6CT8.3-DM |
| Azimuth Thrusters | 2 x 2900 kW Steerprop SP 45D |
| Bow Thrusters | 2 x 560 kW Schottel STT FP |

Deck Machinery

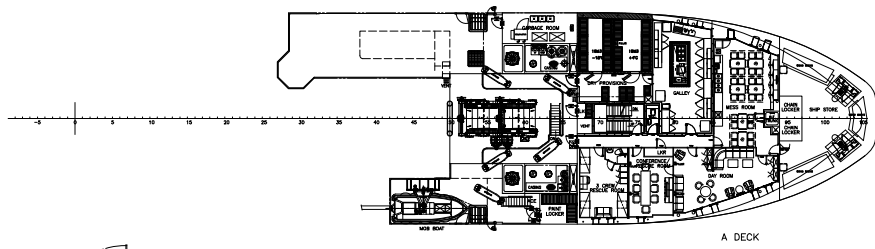
| | |
|----------------------------|--|
| Forward Winch/ Windlass | 1 x 150T Brake Holding Macgregor |
| Main Tow Winch | 1 x 250T Brake Holding Waterfall Macgregor |
| Tugger Winch | 2 x 10T Macgregor |
| Capstan | 2 x 5T Macgregor |
| Chain Jaw | 1 x 11T Pull |
| Shark Jaw | 1 x 250T Macgregor |
| Tow Pins | 1 x 250T Macgregor |
| Storage Reel | 1 x 1200m x 60dia Macgregor |
| Deck Crane | 6T @ 17 mts TTS |
| Stern Roller | 250T SWL |



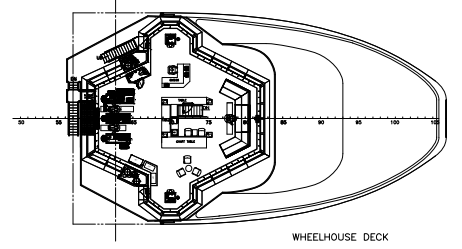
- PLATFORM 4
- PLATFORM 3
- PLATFORM 2
- PLATFORM 1
- WHEELHOUSE TOP
- WHEELHOUSE DECK
- C DECK
- B DECK
- A DECK
- MAIN DECK
- MEZZANINE
- TANK TOP (BPT)
- TANK TOP



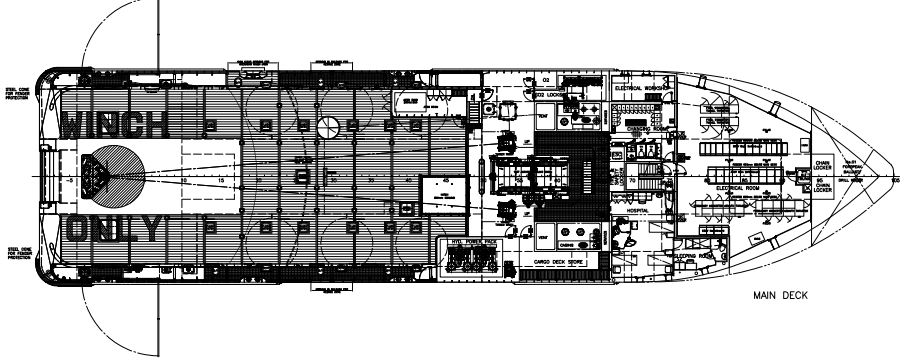
WHEELHOUSE TOP



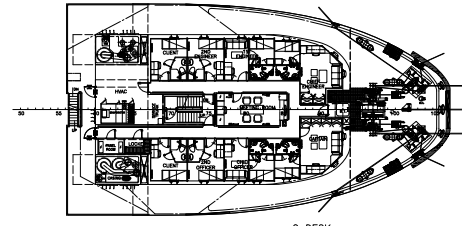
A DECK



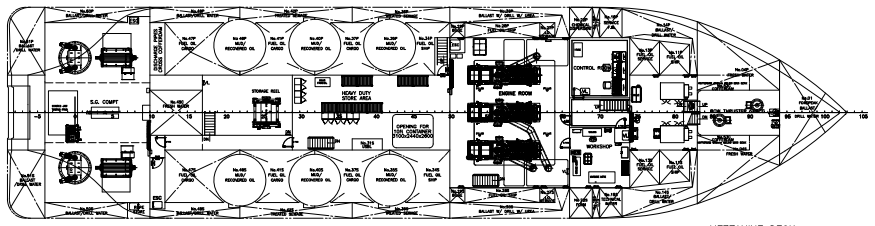
WHEELHOUSE DECK



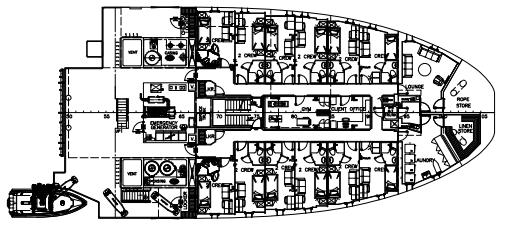
MAIN DECK



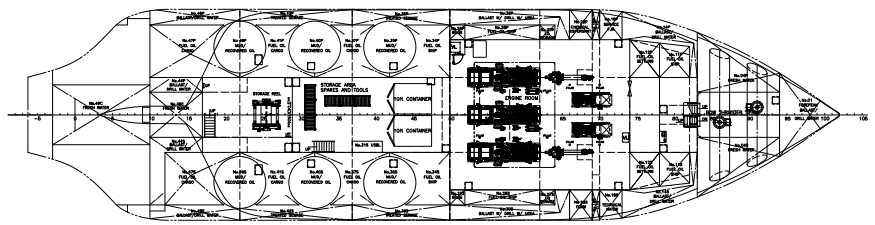
C DECK



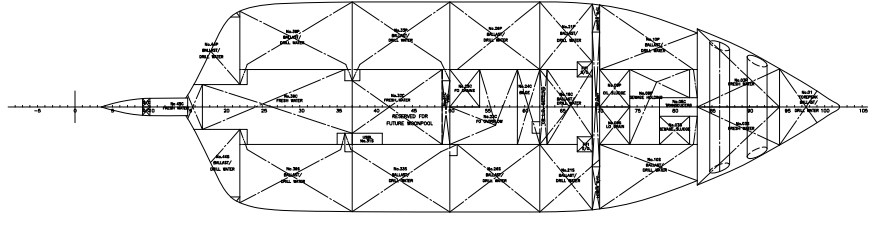
MEZZANINE DECK



B DECK



TANK TOP



BELOW TANK TOP

GENERAL PARTICULARS

| | |
|------------------------------|------------|
| LENGTH O.A. (INCL FENDERS) | 69.90 M |
| LENGTH O.A. (EXCL FENDERS) | 69.50 M |
| RULE LENGTH | 64.23 M |
| BREADTH MLD. | 16.90 M |
| DEPTH MLD. (MAIN DECK) | 7.00 M |
| MAX DRAUGHT (UNDERSIDE SKEG) | 5.50 M |
| SCANTLING DRAUGHT | 5.95 M |
| COMPLEMENT | 35 PERSONS |
| RESCUED | 25 PERSONS |
| TOTAL PERSONS ON BOARD | 60 PERSONS |

| | | | |
|----------------------|---|---|--------|
| OSD-IMT | | OSD-IMT DUNDÉE - UK HEAD OFFICE One 36 City Quay Corporation Street Dundee DD1 3JN info@osd-imt.com www.osd-imt.com +44 (0)1392 231 100 | |
| PROJECT | 69.9M EMERGENCY TOWING VESSEL | DRAWN | - |
| TITLE | GENERAL ARRANGEMENT | CHECKED | - |
| BUILDER | GUANGDONG YUEXIN OCEAN ENGINEERING CO., LTD | APPROVED | - |
| CAD REFERENCE NUMBER | 14082 - 101 - 1 - | DATE | - |
| | | SCALE | 1:150 |
| | | SHEET | 1 OF 1 |