



BOS ARES

5150 BHP | 65 TBP | AHTS

Class Notation: LR 100A1 AHTS, Fire-Fighting Ship 1 (2,400 m³/h) with Water Spray
LMC, (DP(AM) Suspended)
ShipRight (IHM-EU+)

Main Particulars

Flag	Singapore
Call Sign	9V8668
IMO No.	9552197
Year Built	2012
Max Summer Draft	4.95m
Gross Tonnage	1,678 T
Net Tonnage	503 T
Deadweight (Max Draught)	1,360 T
Displacement	2,895 T

Dimensions

Length Overall	59.25m
Beam Overall	14.95m
Depth Moulded	6.10m

Performance

Max Speed	abt 18m ³ per day @ 13 kts
Service Speed	abt 10 m ³ per day @ 10 kts
Towing	abt 20m ³ per day
Standby	abt 1.2m ³ per day

**Subject to actual weather and operating conditions*

Cargo Deck

Deck Cargo Area	340m ²
Deck Cargo Dimension	ard 12m x 28m
Deck Cargo Capacity	500 T
Deck Strength	7T/m ²
Reefer Points	6 pts

Capacities

Fuel Tank	535 m ³
Fresh Water	360 m ³
Drill Water*	400 m ³
Mud /Base/Brine* Tank	378 m ³
Dry Bulk Tank Oil Recovery*	187 m ³ (6600 cuf)

**indicates tanks with shared capacity*

Main Engines & Generators

Main Engine	2 x CAT 3516B Diesel (2575 BHP) 5150 BHP
Generator	2 x CAT C18 350KW
Shaft Generators	2 x 800KW
Emergency Generators	1 x CAT 65KW

Thrusters & Propulsion

Bow Thruster	1 X Kawasaki KT-72B3 - 515KW 8T Thrust
Stern Thruster	1 x Kawasaki KT-55B3 - 390KW 6T Thrust
Propeller	2 x CPP in Fixed Kort Nozzles

Deck Crane

Fixed Crane	1 x 3T @ 9m
-------------	-------------

Anchor Handling/Tow Equipment

Tow/AH Winch Pull Capacity	150T
Brake Holding Capacity	200T
Tow Drum Capacity	1,000m x 56mm
Anchor Handling Capacity	100m x 56mm
Spare Tow Wire Capacity	1,000m x 56mm
Tugger Winch	2 x 10 tons @ 15m/min
Capstan	2 x 5 tons @ 15m/min
Shark Jaws	200T SWL
Tow Pins	2 x Closed Top Type 200T SWL
Stern Roller	4.0 m x 1.6 m - SWL 200 tonnes

Mooring Equipment

Anchor	2 x 1310 kg Type HHP
Anchor Chain	2 x 16 length x 36 mm
Anchor Windlass	MacGregor

Dynamic Positioning System

DP Class	Class 1
References VRU	
Joystick	Kongsberg C_Joy

Discharge Rates

Drill Water/Pump	100m ³ per hr at 75m head
Fresh Water/pump	100m ³ per hr at 75m head
Fuel/Pump	150m ³ per hr at 75m head
Mud /Base/Brine Tank /Pump	70m ³ per hr

Communications Equipment

HF radio	FURUNO RC-1500-1T 400W
VHF Radio	2 x FURUNO
Portable VHF Radio's	3 x FURUNO
Satellite Communications (Voice and Fax)	V-SAT
E. P. I. R. B	McMurdo 406
GMDSS Compliance	Area A3

Navigation Equipment

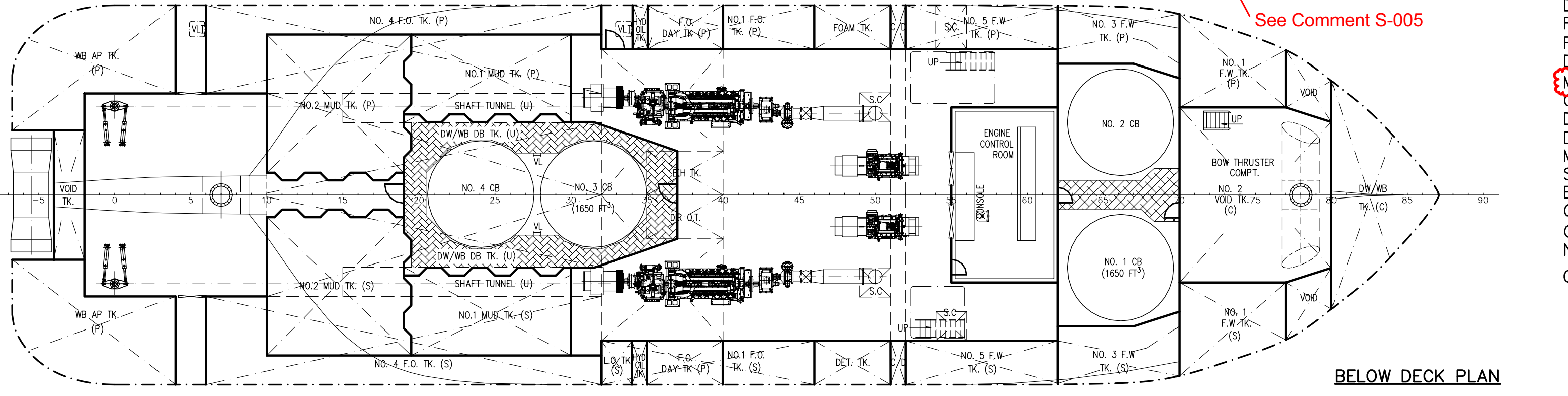
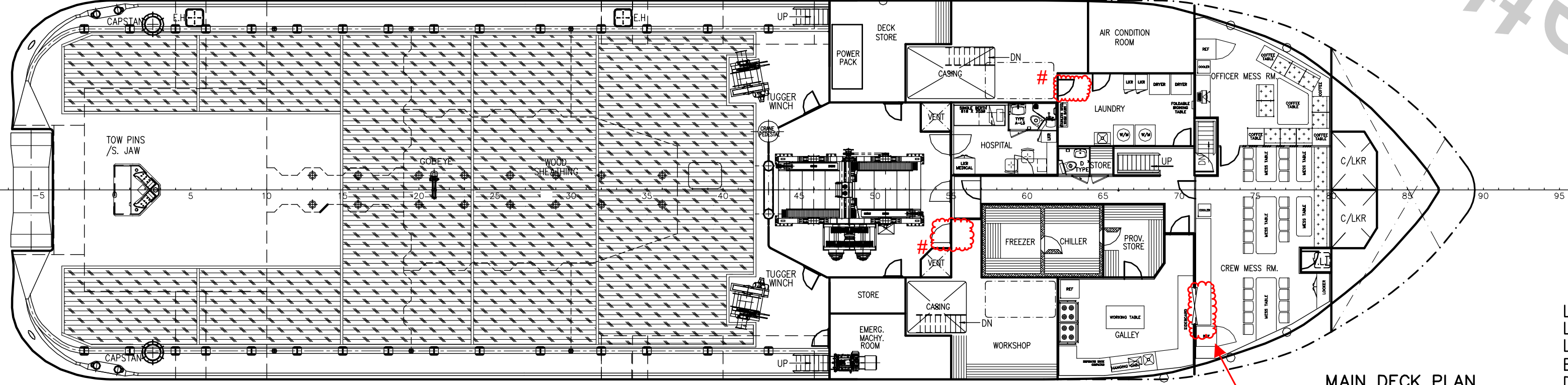
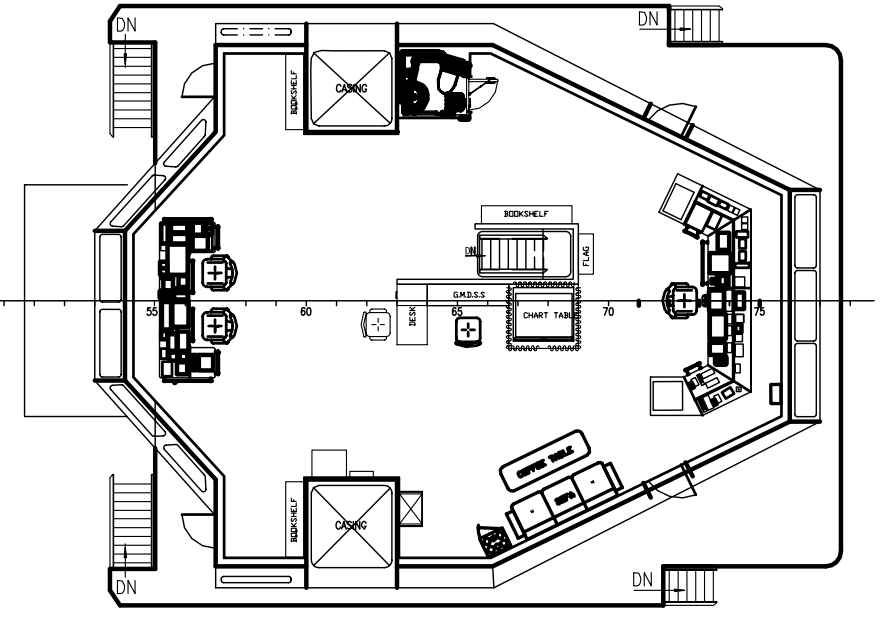
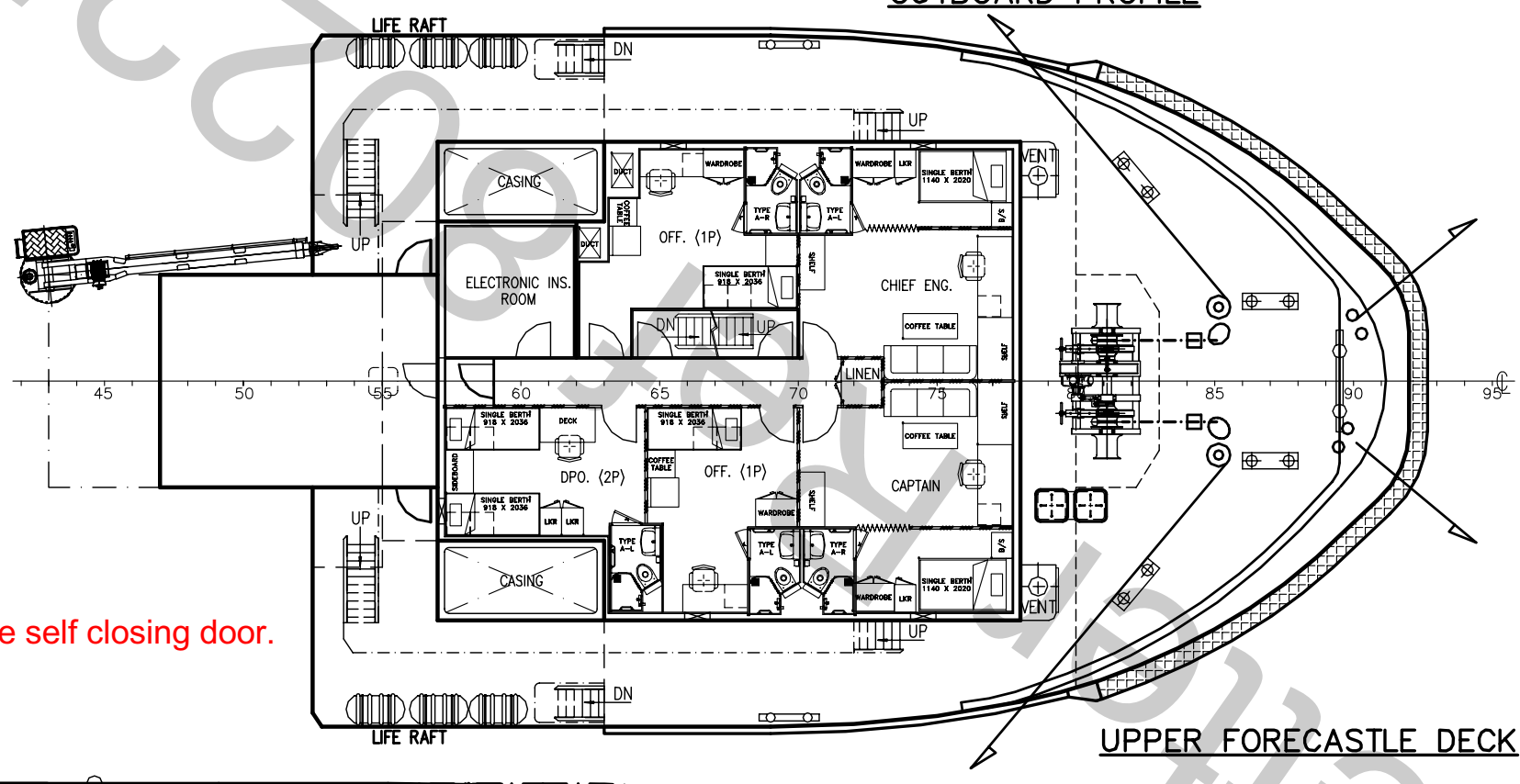
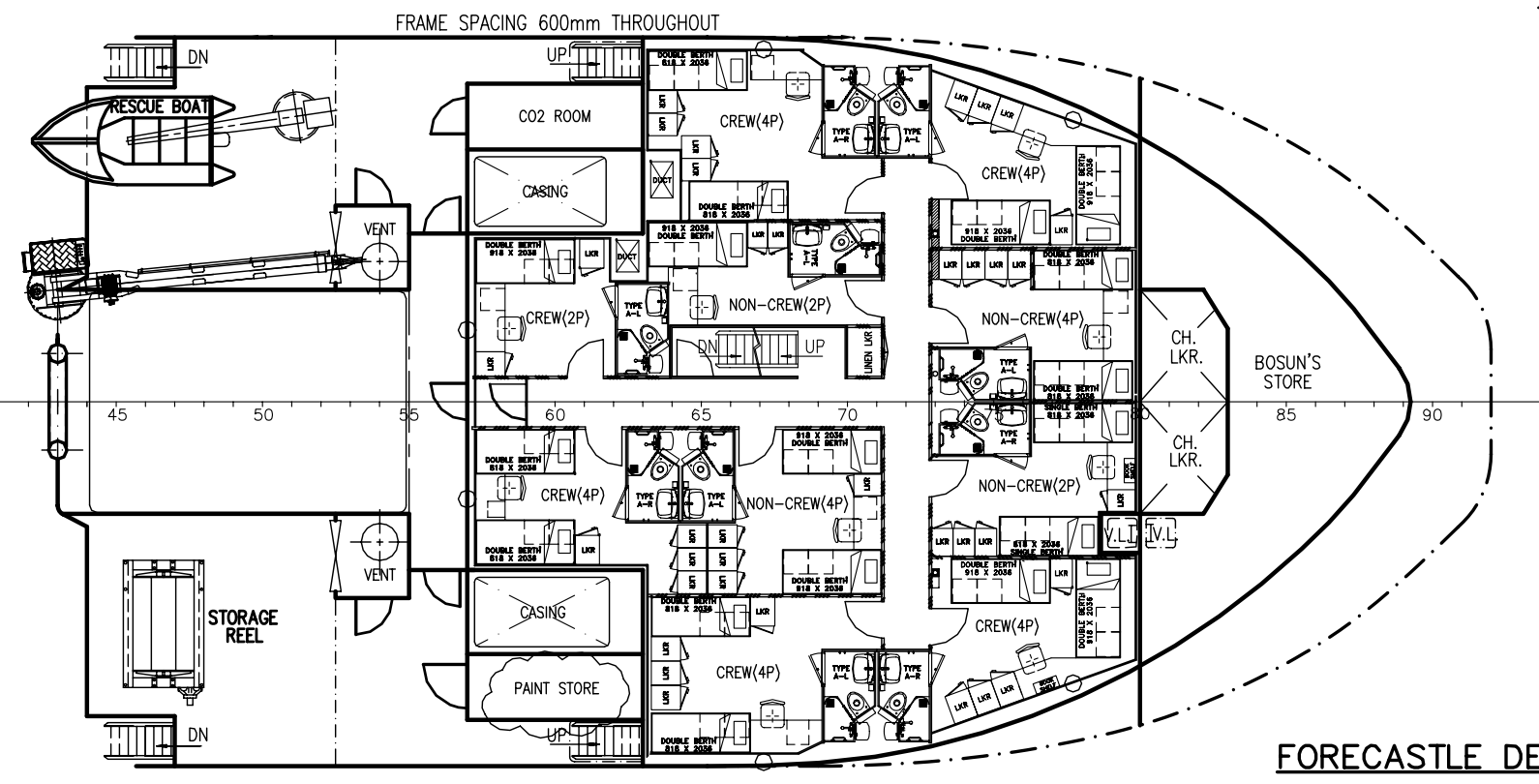
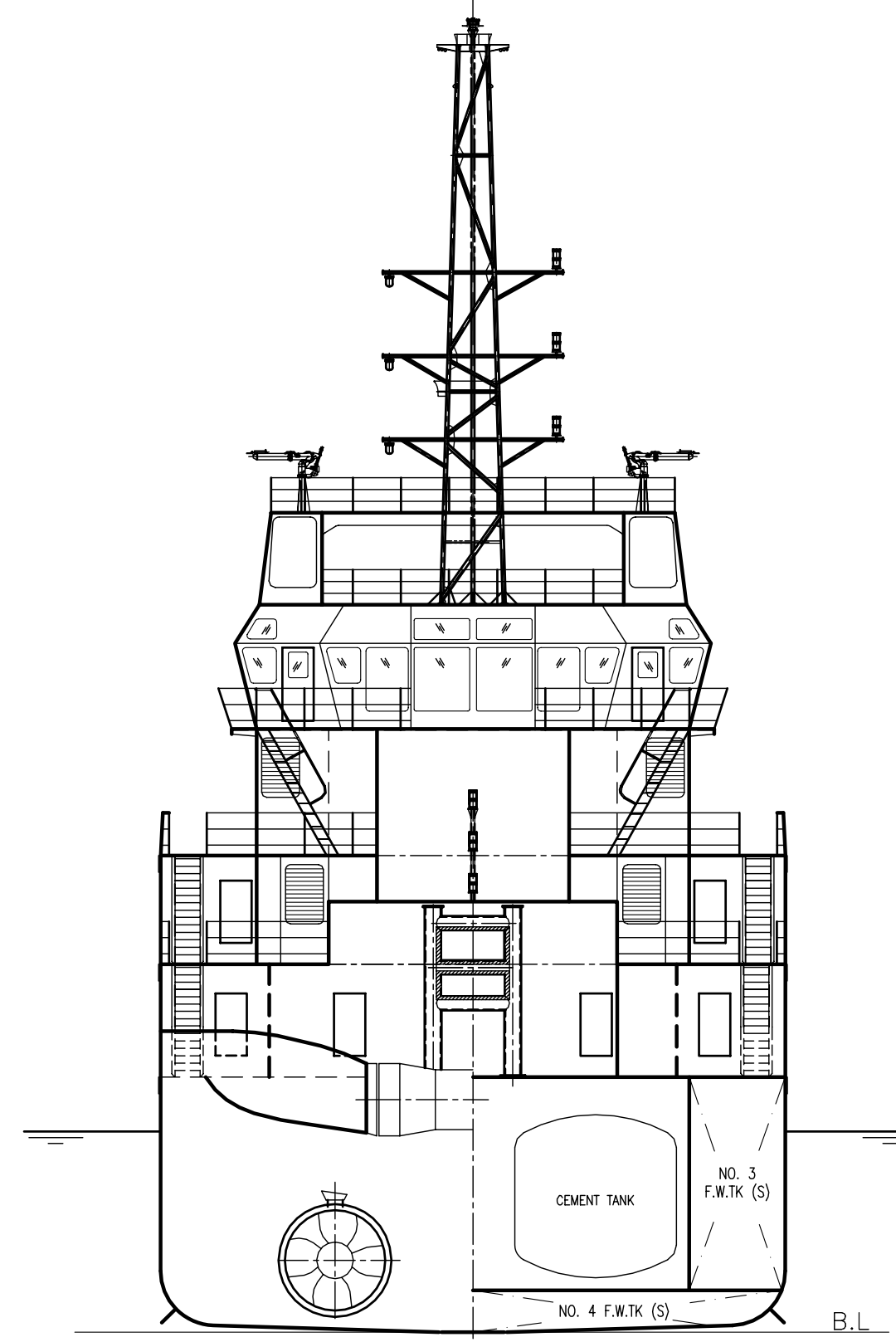
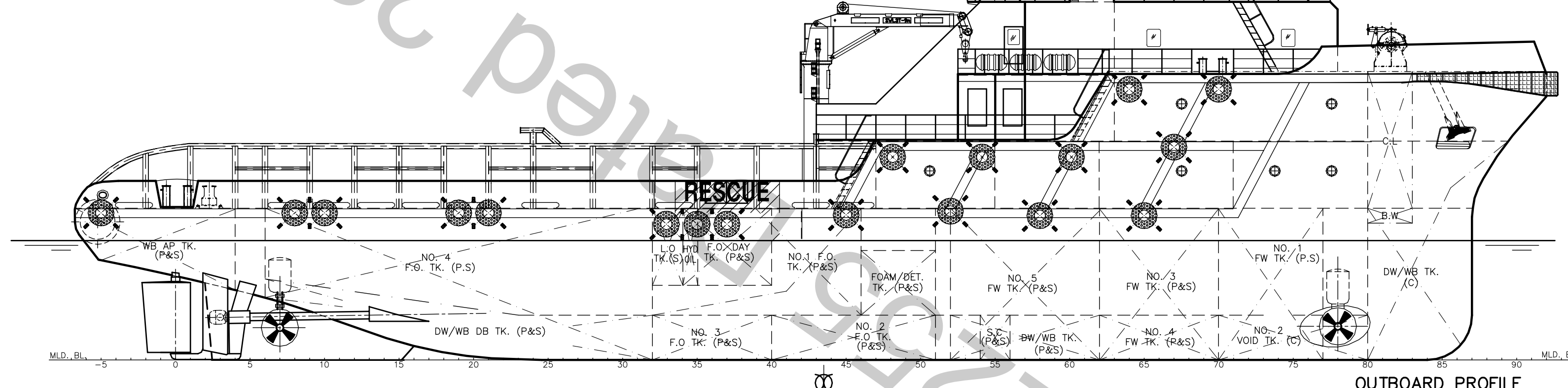
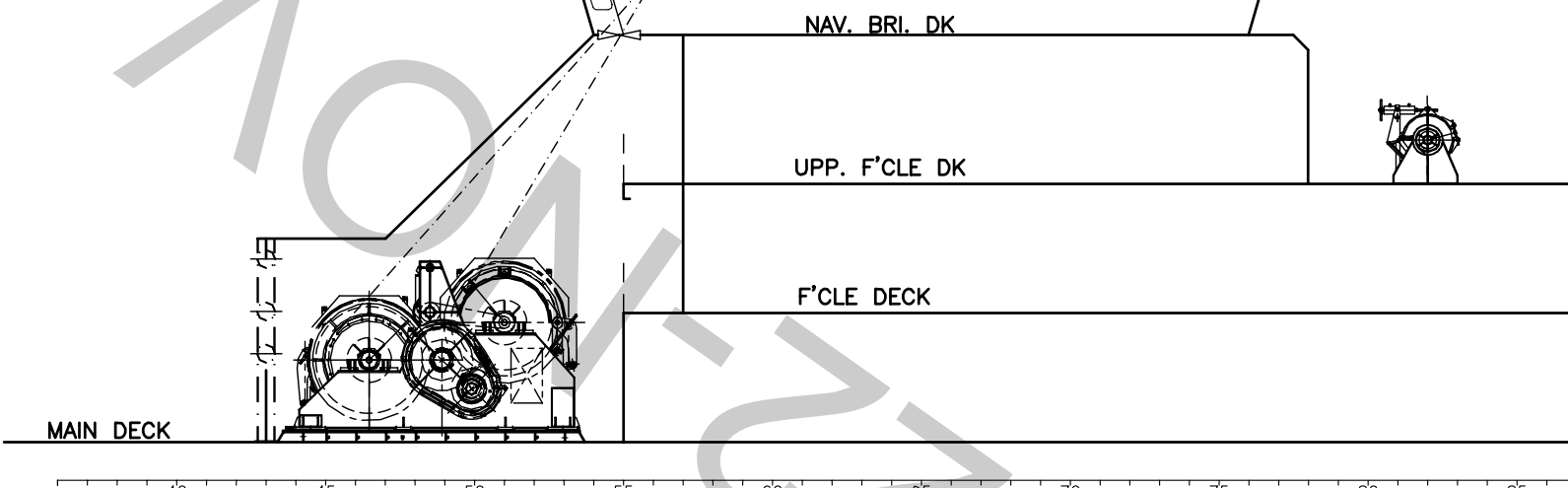
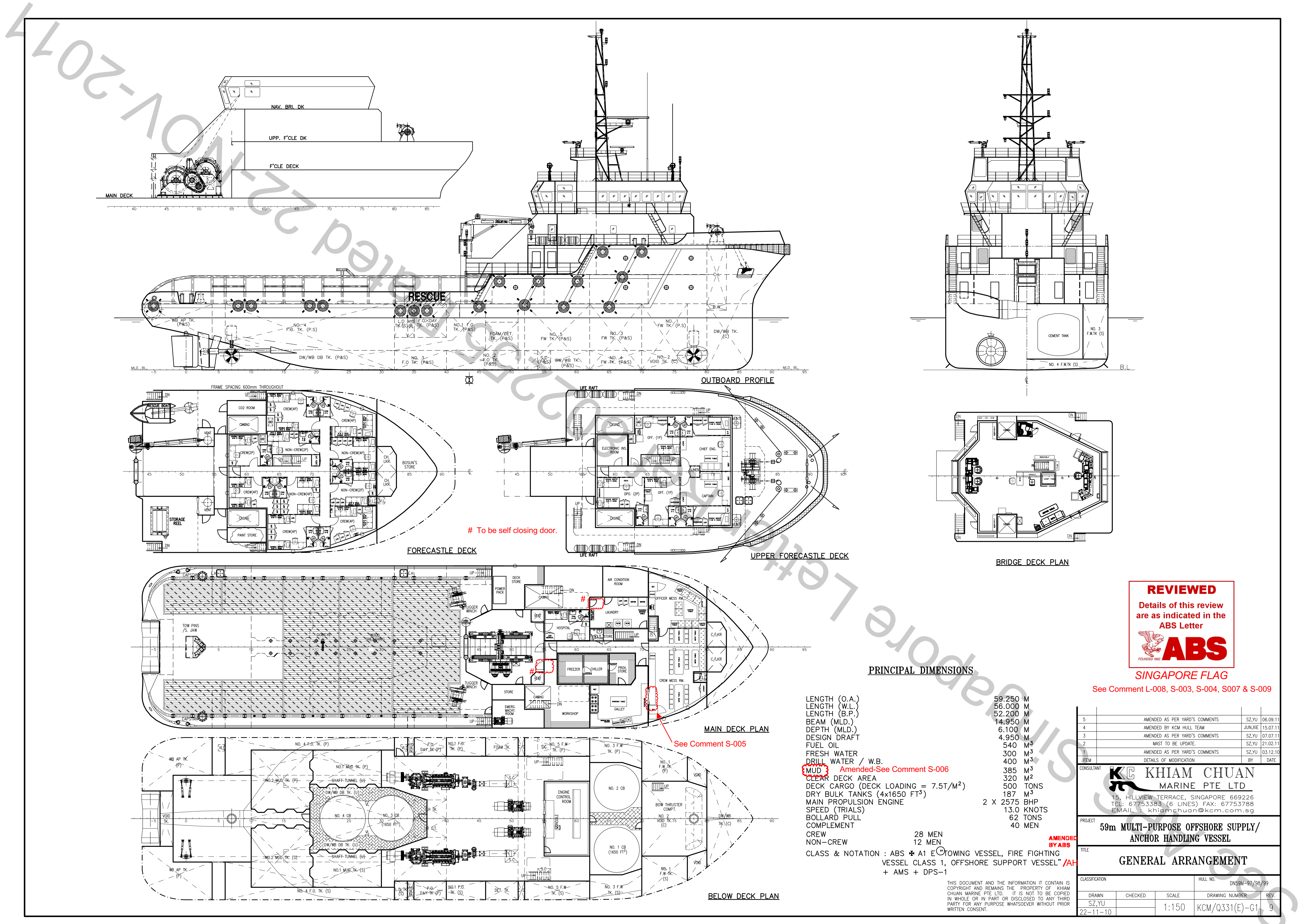
Radar No. 1	Furuno x-band (21" screen)
Radar No. 2	Furuno x-band (15" screen)
GPS	GP 150
Echo Sounder	Furuno FE 702
Navtex	NX 700
Auto Pilot	Nautopilot NP 60
Gyro Compass	Anchutz STD 22
System	Kongsberg

Fire Fighting and Rescue

Firefighting System	FiFi-1
FiFi Pump	2 x 1200 cu m per hr
FiFi Monitor	2 units
Spray Boom	2 units
	Throw x Height - 120m x 50m
Foam Capacity	13m ³
Rescue Boat	15 HP OBM, capacity 6 men
Life Raft	6 units , total capacity 150 men

Accommodation

Crew	14 pax
Passengers	26 pax
Total	40 pax



To be self closing door.

See Comment S-005

PRINCIPAL DIMENSIONS

LENGTH (O.A.)	59.250 M
LENGTH (W.L.)	56.000 M
LENGTH (B.P.)	52.200 M
BEAM (MLD.)	14.950 M
DEPTH (MLD.)	6.100 M
DESIGN DRAFT	4.950 M
FUEL OIL	540 M ³
FRESH WATER	300 M ³
DRILL WATER / W.B.	400 M ³
MUD	385 M ³
CLEAR DECK AREA	320 M ²
DECK CARGO (DECK LOADING = 7.5T/M ²)	500 TONS
DRY BULK TANKS (4x1650 FT ³)	187 M ³
MAIN PROPULSION ENGINE	2 X 2575 BHP
SPEED (TRIALS)	13.0 KNOTS
BOLLARD PULL	62 TONS
COMPLEMENT	40 MEN
CREW	28 MEN
NON-CREW	12 MEN
CLASS & NOTATION	ABS * A1 E ^C TOWING VESSEL, FIRE FIGHTING VESSEL CLASS 1, OFFSHORE SUPPORT VESSEL" /AH + AMS + DPS-1

REVIEWED
Details of this review are as indicated in the ABS Letter

SINGAPORE FLAG

See Comment L-008, S-003, S-004, S007 & S-009

5	AMENDED AS PER YARD'S COMMENTS	SZ.YU	06.09.11
4	AMENDED BY KCM HULL TEAM	JUN.XIE	15.07.11
3	AMENDED AS PER YARD'S COMMENTS	SZ.YU	07.07.11
2	MUST TO BE UPDATE.	SZ.YU	21.02.11
1	AMENDED AS PER YARD'S COMMENTS	SZ.YU	03.12.10
DETAILS OF MODIFICATION			
ITEM	BY	DATE	
CONSULTANT			
KCM KHIAM CHUAN MARINE PTE LTD			
15, HILLVIEW TERRACE, SINGAPORE 669226 TEL: 67753383 (6 LINES) FAX: 67753788 EMAIL: khiamchuan@kcm.com.sg			
PROJECT			
59m MULTI-PURPOSE OFFSHORE SUPPLY/ ANCHOR HANDLING VESSEL			
TITLE			
GENERAL ARRANGEMENT			
CLASSIFICATION		HULL NO. DN69M-97/90/99	
DRAWN	CHECKED	SCALE	DRAWING NUMBER
SZ.YU		1:150	KCM/Q331(E)-G1
			REV. 9
			22-11-10

THIS DOCUMENT AND THE INFORMATION IT CONTAINS IS COPYRIGHT AND REMAINS THE PROPERTY OF KHIAM CHUAN MARINE PTE. LTD. IT IS NOT TO BE COPIED IN WHOLE OR IN PART OR DISCLOSED TO ANY THIRD PARTY FOR ANY PURPOSE WHATSOEVER WITHOUT PRIOR WRITTEN CONSENT.