



BOS Chablis

6500 BHP | 92 TBP | DP2

Class Notation: OSV, Tug, Supply Vessel; Anchor Handling; Fire-Fighting Ship 1; water spraying; biosafe ship; Efficient Ship; Sustainable Ship; SPS;

Main Particulars

Flag	Luxembourg
Call Sign	LXVE
IMO No.	9697105
Year Built	2015
Design Draft	5 M
Max Summer Draft	5 M
Gross Tonnage	2281 T
Net Tonnage	684 T
Deadweight (Max Draught)	1800 T

Dimensions

Length Overall	65 m
Beam	16 m
Depth Moulded	5.20 m

Performance

Max Speed	About 13 MT @12 knots
Economical Speed	About 8 MT @8 knots

Cargo Deck

Deck Cargo Area	435 m ²
Deck Cargo Dimension	31 m x 14 m
Deck Cargo Capacity	600 t
Deck Strength	7 t/m ²

Main Engines & Generators

Main Engine	2 x 2427 kW/6500 BHP
Generator	3 x 450 kW
Shaft Generator	2 x 1164 kW M/E Driven

Thrusters & Propulsion

Bow Thruster	2 x 10 t (550 kW)
Stern Thruster	1 x 8 t (550kW)

Deck Crane

Fixed Crane	2 t SWL @15 m
-------------	---------------

Anchor Handling/Tow Equipment

Tow/Anchor Handling Winch	MG-AHTW/FW-150/250
Stall Pull Capacity	150 t
Brake Holding Capacity	250 t
Tow Drum Capacity	1200 m x 60 mm
Anchor Handling Capacity	1200 m x 60 mm
Tugger Winch	2 x 10 t @15m/min
Capstan	2 x 5 t @15m/min
Shark Jaws	1 set of karmfork – 250 t SWL
Tow Pins	2 x towing pins – 250 t SWL
Stern Roller	4.4 m x 1.7 m – SWL 250 t SWL

Capacities

Fuel Tank	580 m3
Fresh Water	440 m3
Drill Water	372 m3
Mud/Brine/Oil Rec Tank	460 m3
Dry Bulk Tank	150 m3

Discharge Rates

Drill Water/Pump	100 m3/hr at 75 m head
Fresh Water/Pump	100 m3/hr at 75 m head
Fuel/Pump	150 m3/hr at 75 m head
Brine/Mud Pump	100 m3/h at 70 m head
Dry Bulk	50t/h at 75 m head

Accommodation

Crew	14
Passengers	34
Hospital	yes

Tow/Anchor Handling Wires

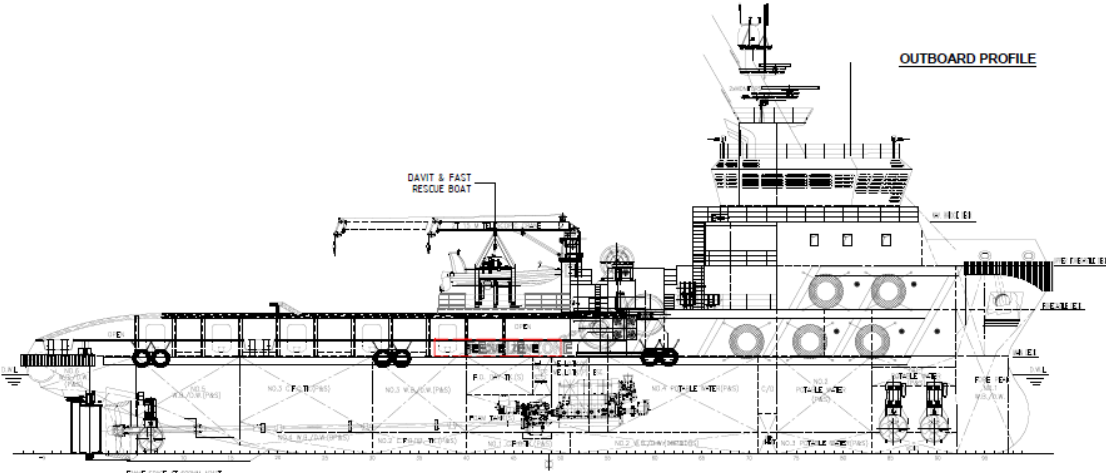
Main Tow Wire	1200 m x 60 mm
Spare Tow Wire	1200 m x 60 mm
Anchor Handling Wire	1200 m x 60 mm

Dynamic Positioning System

DP Class	Kongsberg DP-2
References	1 x DGPS DPS 110 1 x DGPS DPS 112 1 x Radius 1000 1 x Cyscan
Joystick	Yes

Fire Fighting and Rescue

Firefighting System	FiFi 1 – 2 x 1200 cu m per hr
FiFi Pump	120 m x 45 m
FiFi Monitor	2
Spray Boom	yes
Rescue Boat	1 x FRC 15 pax launched by davit



A.H.T.S. "VOS CHABLIS"	
MAIN DIMENSIONS	
LENGTH (O.A.)	66.000 M
LENGTH (B.P.)	58.500 M
BEAM (M.L.D.)	16.000 M
DEPTH (M.L.D.)	6.200 M
DESIGN DRAFT	5.000 M
GROSS TONNAGE	1678 T
NET TONNAGE	503 T
CLASS	RINA
FLAG	ITALY
HULL NO.	SK505
SHIPYARD	Fujian Southeast Shipyard

MAIN DECK

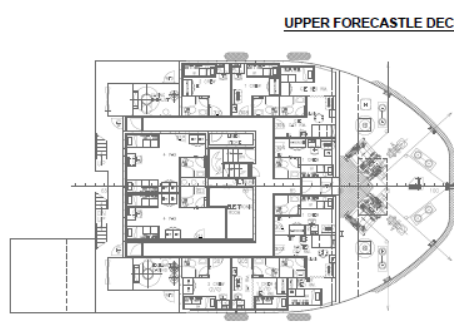
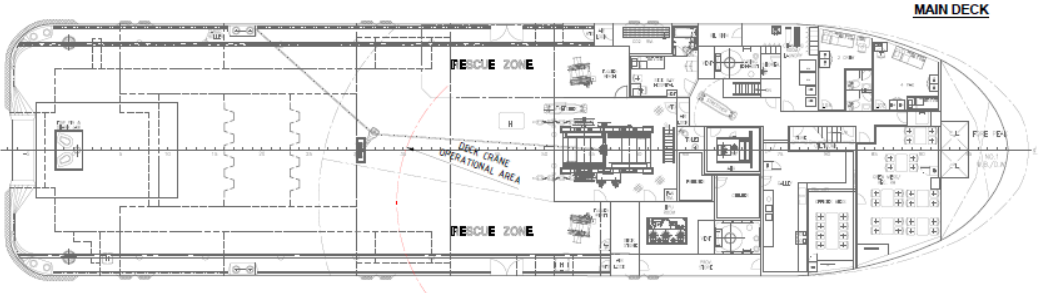
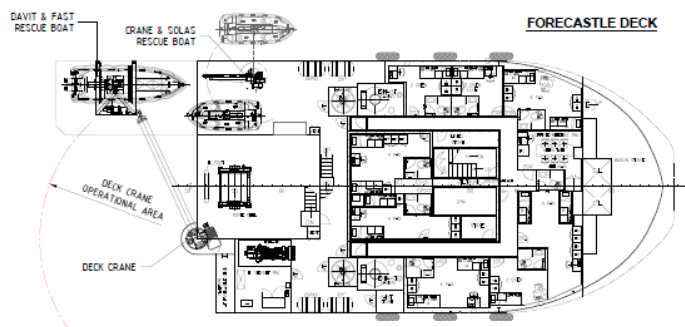
DECK ACCOMMODATION CAPACITY:
 Description: Total n° 2 cabins
 Total n° 6 berths
 N° 1 double cabin is available
 N° 1 cabin with 4 berths is available

FORECASTLE DECK

DECK ACCOMMODATION CAPACITY:
 Description: Total n° 8 cabins
 Total n° 26 berths
 N° 4 double cabins are designated for crew members
 N° 4 cabins with 4 berths each are available

UPPER FORECASTLE DECK

DECK ACCOMMODATION CAPACITY:
 Description: Total n° 10 cabins
 Total n° 18 berths
 N° 8 single cabins are designated for crew members
 N° 2 cabins with 4 berths each are available



REV.	DESCRIZIONE MODIFICHE	DATA	PR. D.
1			
Vron Offshore Services S.r.l. Piazza della Vittoria, 10/7 I-61121 GEMOCIA - ITALY		1:100	08.00
VOS CHABLIS IMO 9529061 - RI 87779		DIS. N° VCB-000-	
ARRANGEMENT WITH NEW MEZZANINE DECK - DAVIT & FRC		TAV. FILE:	