



BOS PATIENCE

DWT 4,200 t | DECK 850 m² | DP2 PSV

Class Notation: LR X 100 A1 Offshore Supply Ship, Firefighting, IWS, ECO, LMC, UMS, DPA

Main Particulars

Particular	Detail
Flag	Luxembourg
IMO	9742089
Call Sign	PDGJ
Built	2017
Length Overall	83.4 m
Depth (Moulded)	8.0 m
Breadth (Moulded)	18.0 m
Max Summer Draft	6.7 m
Gross Tonnage	3,638 t
Net Tonnage	1,295 t
Deadweight	4,200 t
Fuel Type	ISO 8217:2005 DMA or later revisions

Machinery

Component	Specification
Main Generators	2 × 2,186 BHP (diesel-electric)
Auxiliary Generators	2 × 1,328 BHP (diesel-electric)
Emergency Generator	130 e kW

Thrusters & Propulsion

Parameter	Value
Azimuth Thrusters (aft)	2 × 1,600 kW
Bow Thrusters	2 × 1,179 BHP

Cargo Deck

Parameter	Value
Clear Deck Area	850 m ²
Deck Strength	10 t m ⁻² (aft of #35)

Deck & Mooring Equipment

Equipment	Rating / Size
Tugger Winches	2 × 10 t @ 35 m min ⁻¹
Windlass / Mooring Winch	1 × 10 t (100 kN)
Chain Stoppers	BHF 300 kN
Capstans	2 × 10 t @ 30 m min ⁻¹

Deck Crane

Crane	Rating / Reach
Deck Crane	1 × 3 t SWL @ 18 m

Accommodation

Item	Capacity
Crew	14 (14 single cabins)
Passengers	12 (6 double cabins)
Total Persons	26 (crew + passengers)

Performance

Mode	Speed	MGO Consumption
Transit	13 kn	15.5 MT d ⁻¹
Economy	10 kn	7 MT d ⁻¹
DP Mode	—	4 MT d ⁻¹
In Port	—	1 MT d ⁻¹

*subject to actual weather and operating conditions

Tank Capacities & Discharge Rates

Tank / Medium	Capacity	Discharge Rate
Fuel Oil Cargo	1,464 m ³	200 m ³ h ⁻¹ @ 90 m head
Fresh Water	1,035 m ³	200 m ³ h ⁻¹ @ 90 m head
Mud / Brine	1,293 m ³	75 m ³ h ⁻¹ @ 18 bar head
Ballast / Drill Water	1,674 m ³	200 m ³ h ⁻¹ @ 90 m head
Dry Bulk	260 m ³	—

Dynamic Positioning (DP) System & Navigation Equipment

Instrument	Model / Detail
DP Class	DP2
System	Kongsberg K-Pos DP2
Software Modes	8.2.3.6
References	2 × DGPS; 1 × Radscan; 1 × Cyscan
Joystick	Integrated joystick control
Radar No. 1	1 × X-band: JRC JMA-9122-9XA
Radar No. 2	1 × S-band: JRC JMA-9132-SA
Radar Transponder (9G)	2 × McMurdo S4
DGPS / ECDIS	1 × JRC JAN-901B-FOR; 1 × JRC Navi-Sailor 4000 ECDIS MFD
Echo Sounder	1 × JRC JFE-680
Autopilot	1 × YOKOGAWA PT500A-P-Analog
Gyro Compass	1 × YOKOGAWA CMZ900D + 1 × x900S
Magnetic Compass	1 × YOKOGAWA SR-165
VDR	1 × JRC JCY-1800

Communications Equipment

Instrument	Model / Detail
MF / HF Radio	JRC JSS-2150
VHF Radio	JRC JHS-770S
Portable VHF	3 × Entel HT8982
Satellite EPIRB	2 × McMurdo S4
Inmarsat	1 × Inmarsat-C SSAS; 1 × Inmarsat-C LRIT
NAVTEX Receiver	JRC NCR-333
SART	2 × McMurdo S4
AIS	JRC JHS-183
Weather Facsimile	JRC JAX-9B

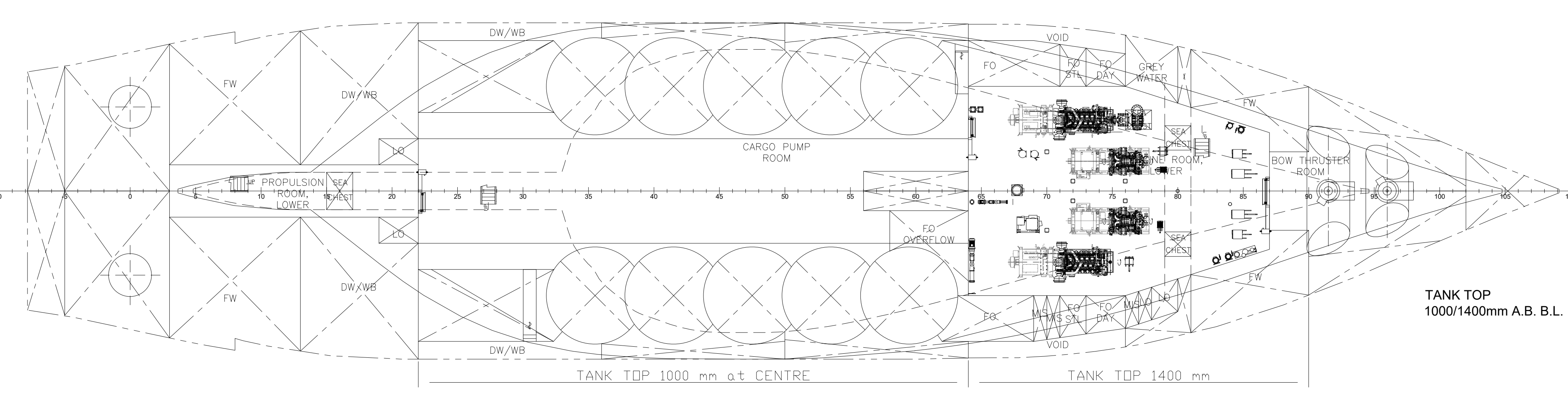
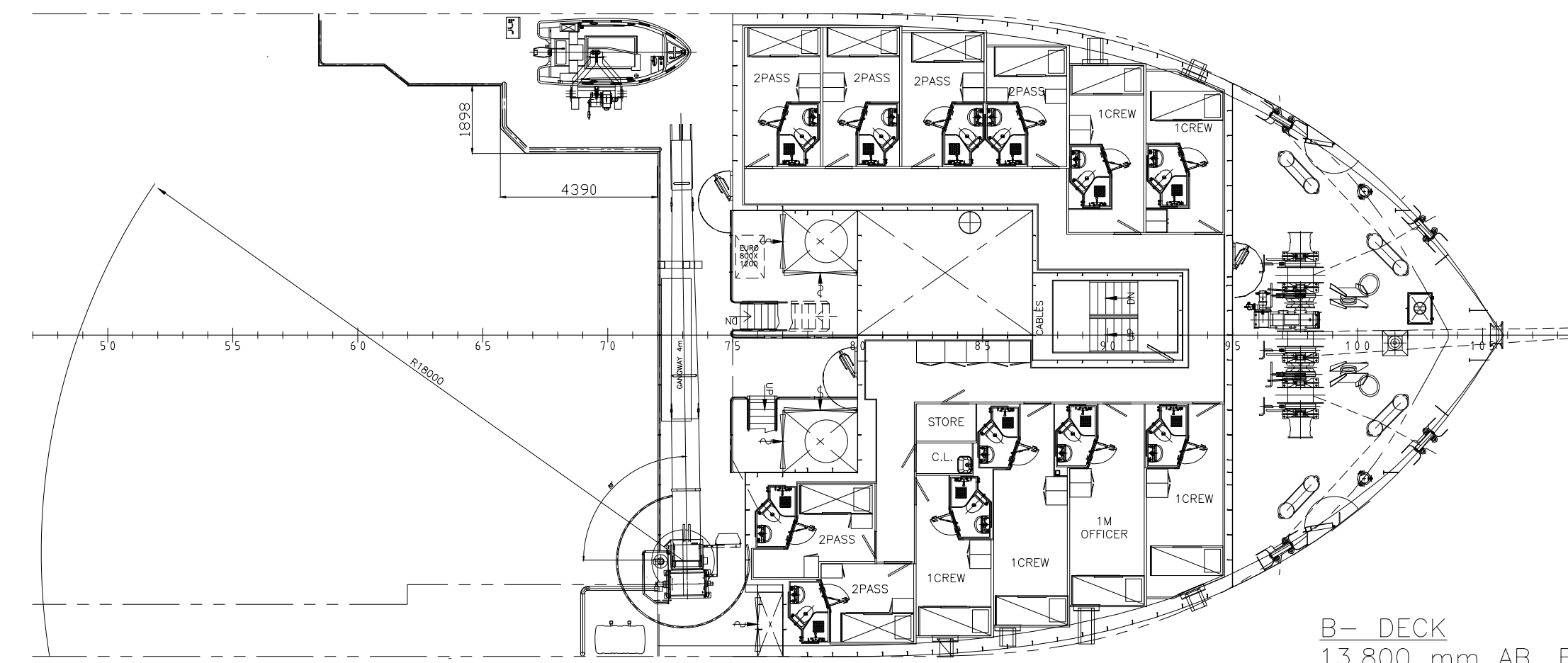
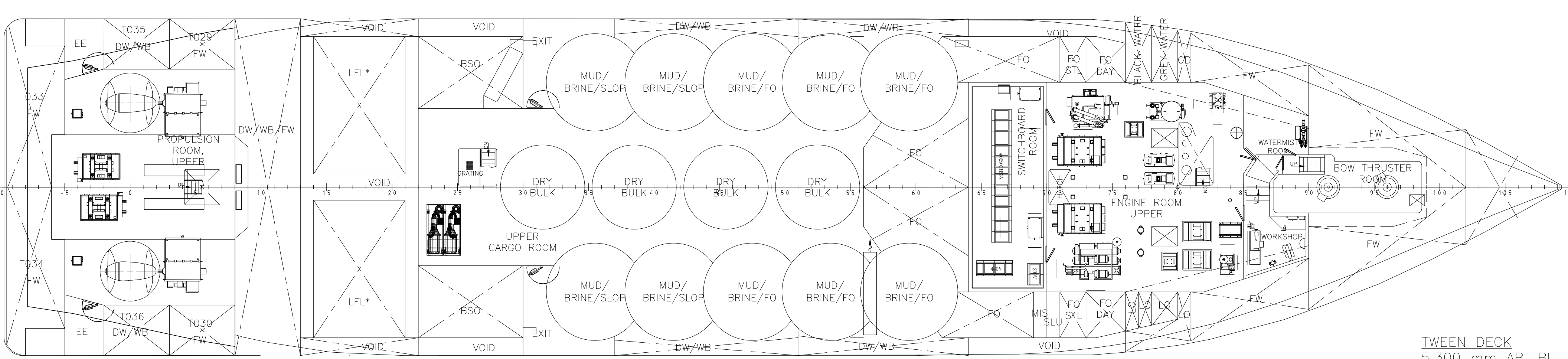
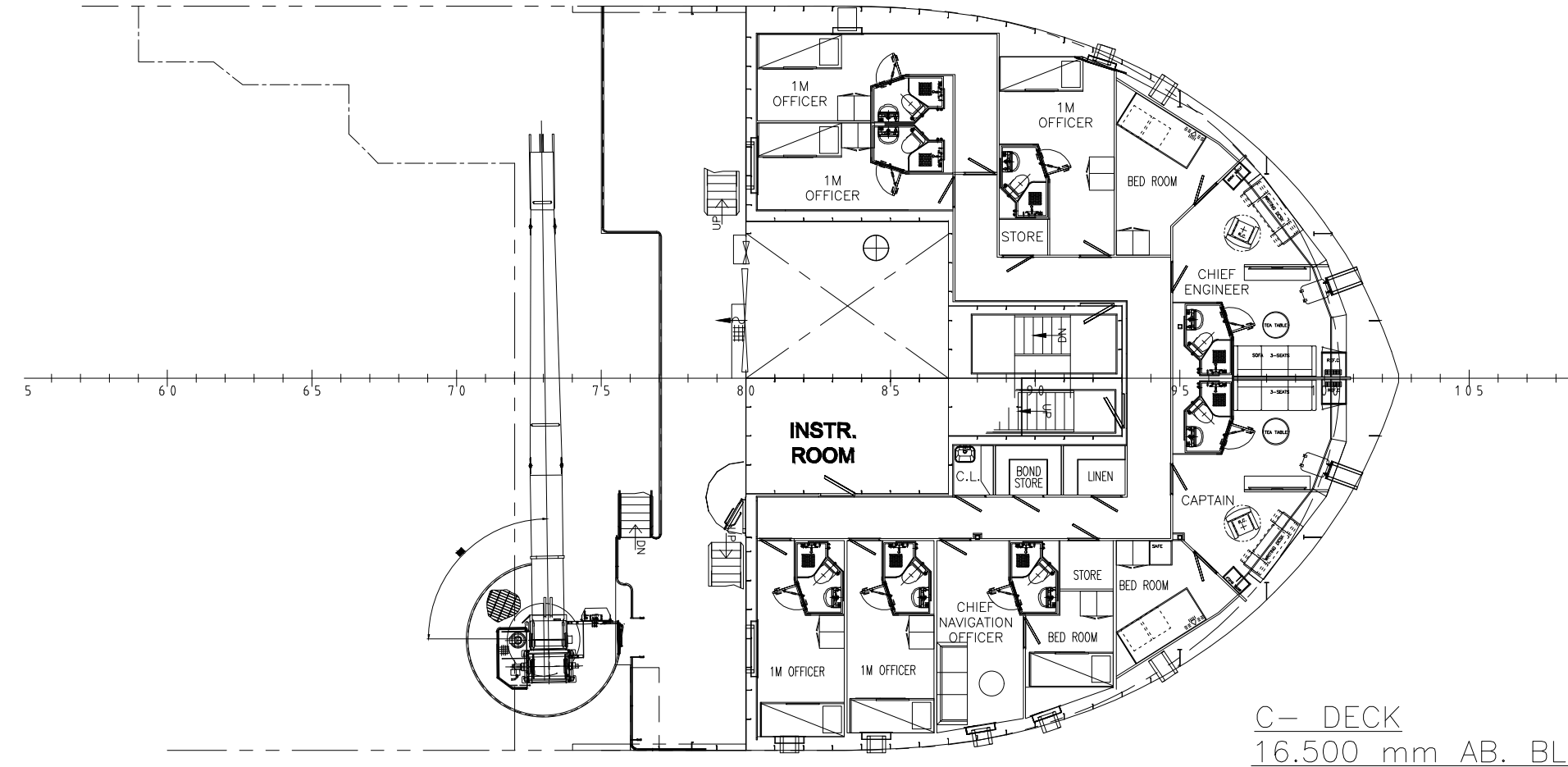
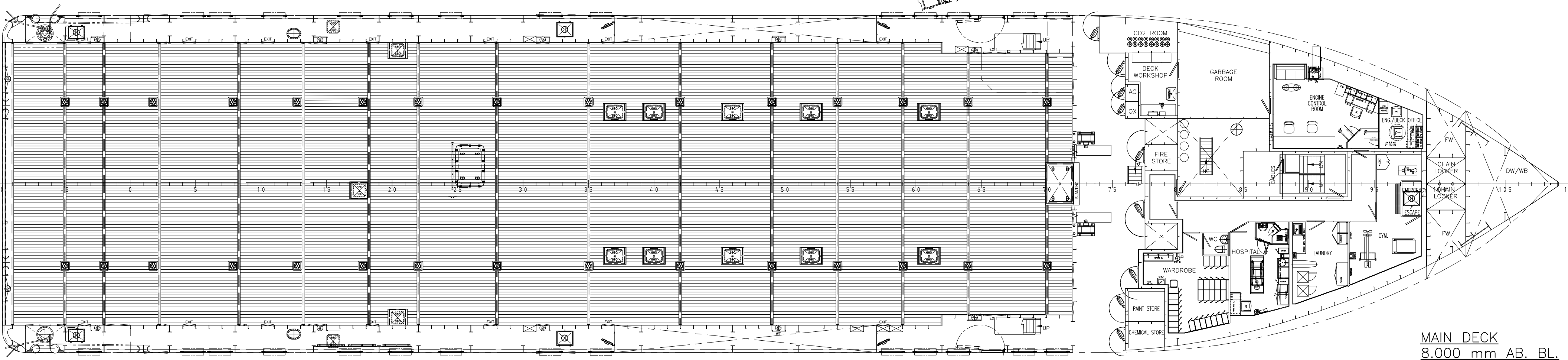
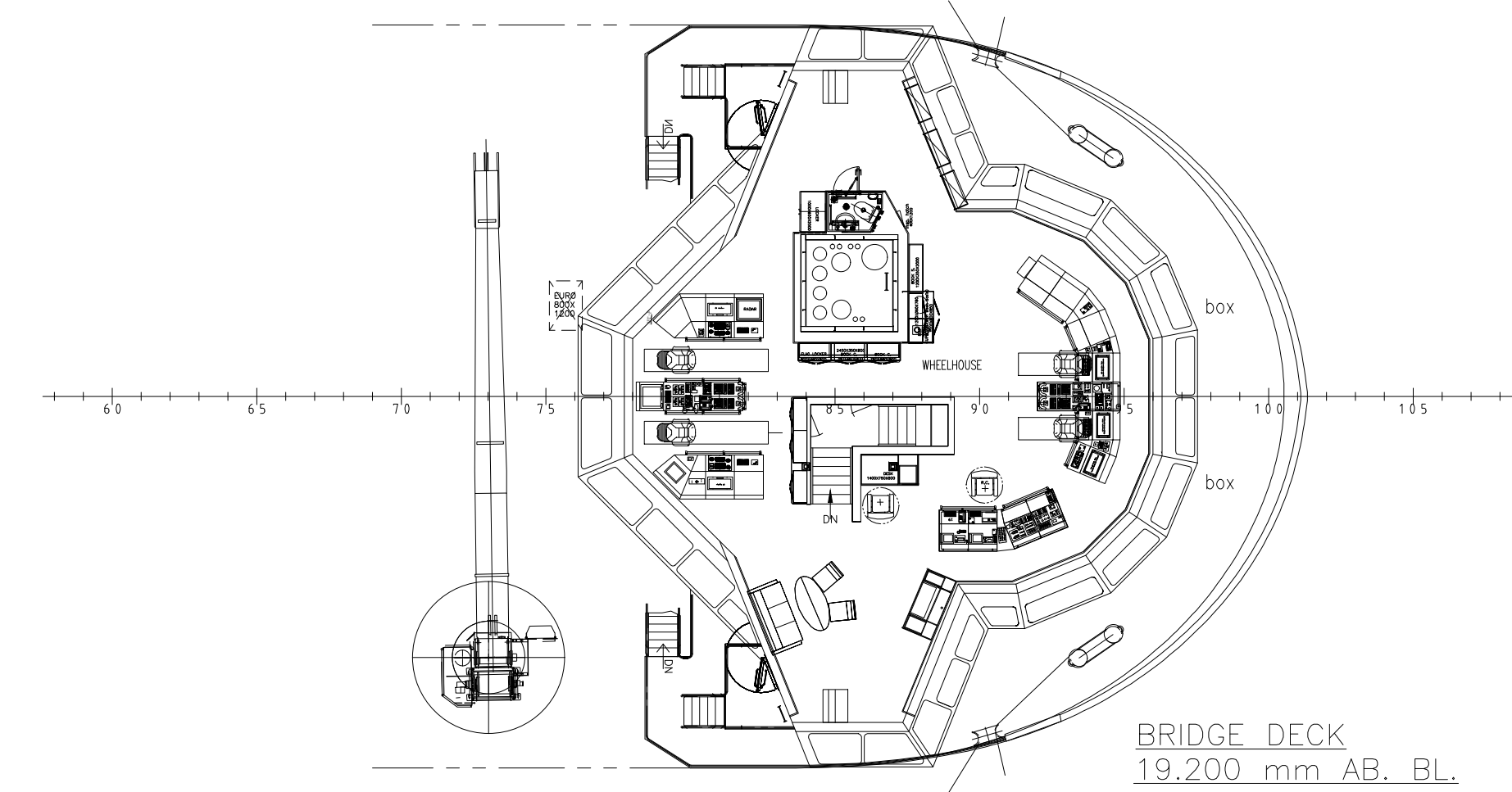
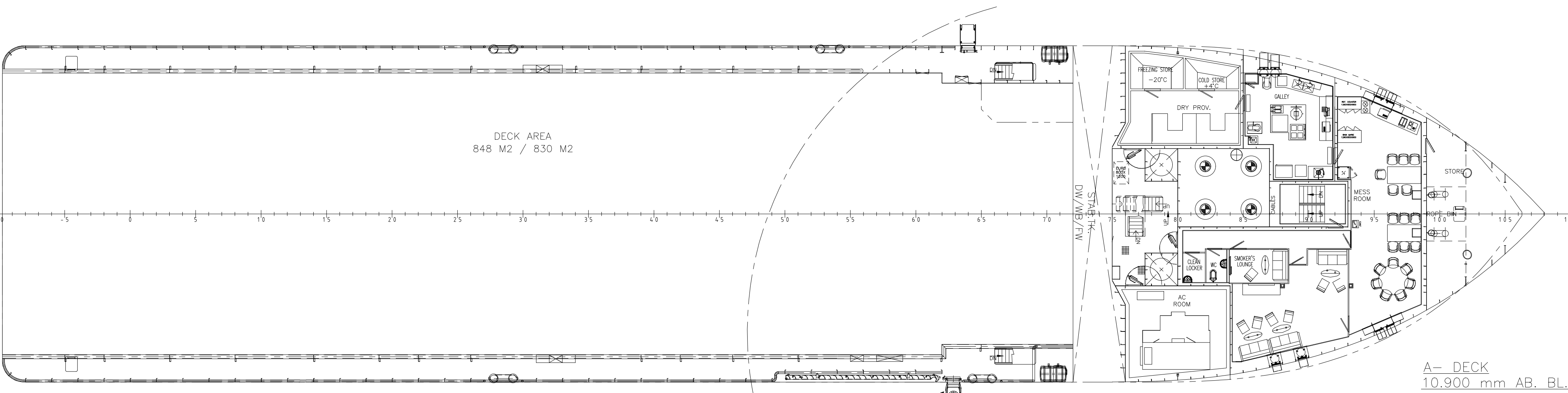
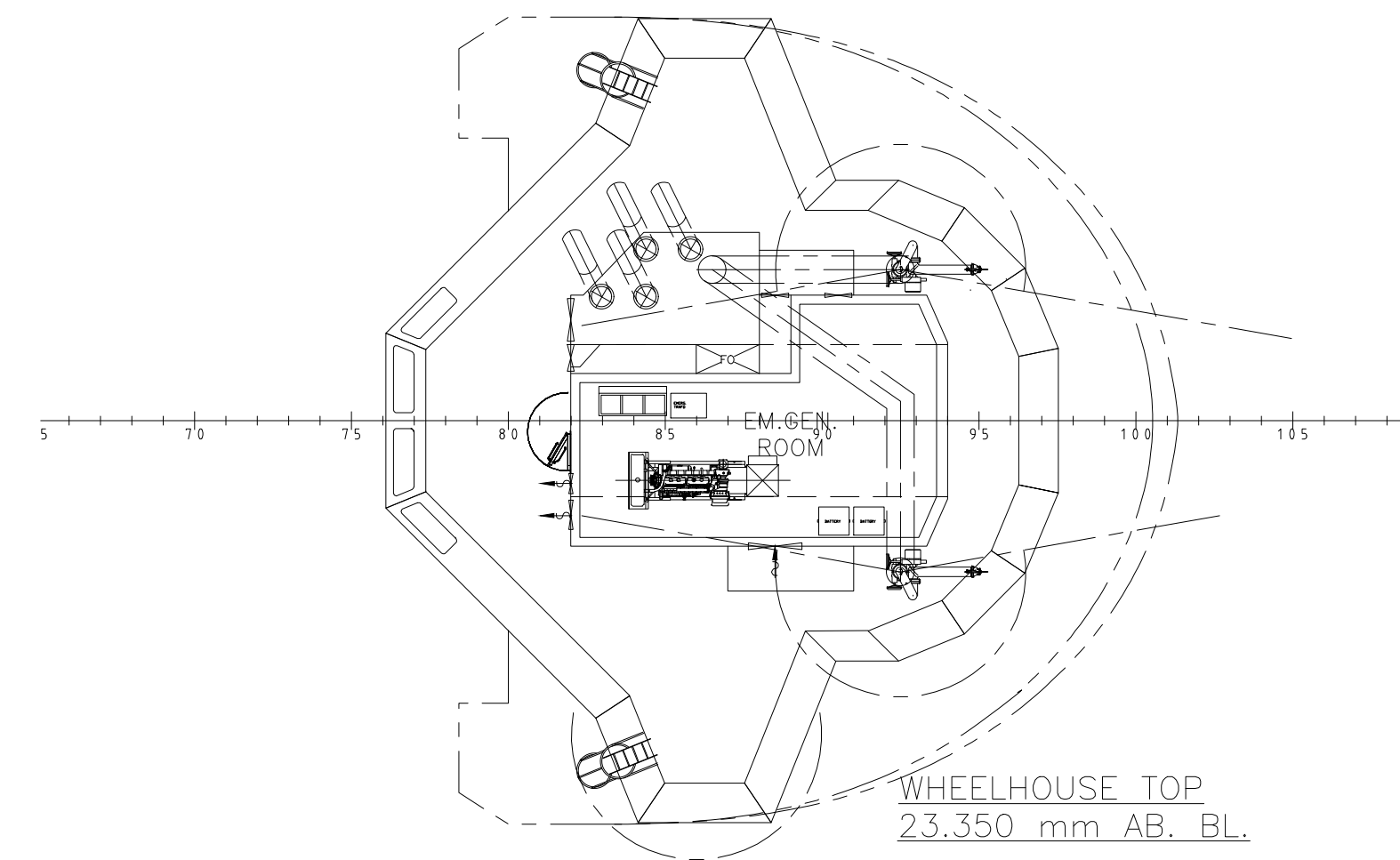
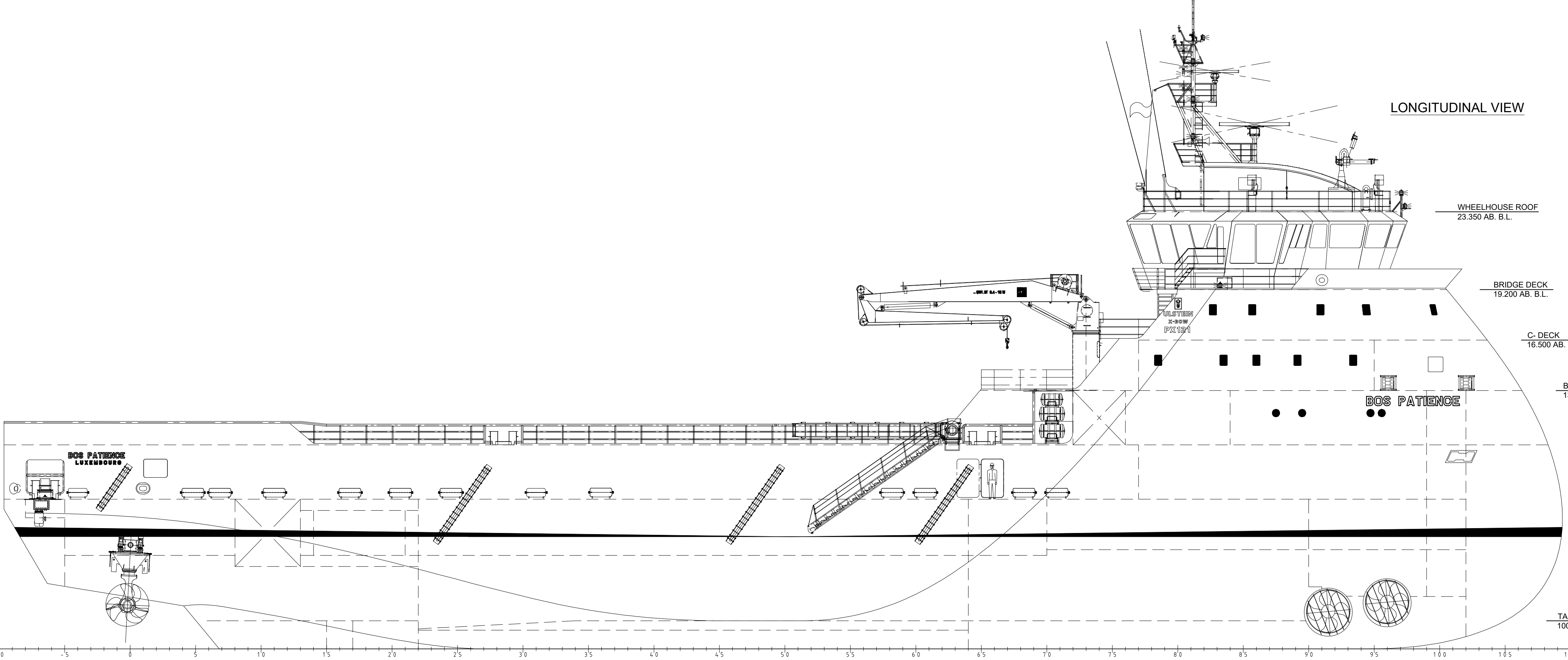
Fire-Fighting & Rescue

Equipment	Capacity / Rating
Fifi Class	Class 1
Pumps (total)	3,820 m ³ h ⁻¹
Monitors	2 × 1,200 m ³ h ⁻¹ (throw > 120 m)
Life Rafts	2 × 20-person and 1 × 6-person on each side
Rescue Boat	1 × 6-person MOB boat

Details given in good faith but not guaranteed. Owners reserve the right to amend specifications without notification.

Britoil Offshore Services Pte Ltd • 100G Pasir Panjang Road, #05-01/02 Interlocal Centre, Singapore 118523 • www.britoil.com.sg

rev 1.0 - 27 August 2025



MAIN DIMENSIONS

LENGTH (O.A.)	83.40 m
LENGTH (B.P.)	79.55 m
BEAM (MLD.)	18.00 m
DEPTH (MLD.)	8.00 m
DRAUGHT MAX	6.70 m
GROSS TONNAGE	3638 T
NET TONNAGE	1295 T
FLAG	Luxembourg
HULL N°.	PX121 - 618

CLASS - Lloyd's
 * LMC, UMS, DP(AA)
 * 100A1 Offshore Support Ship, Fire-Fighting Ship 1 (2400m3H) with Water Spray, HNLS, TWS, ECO-(TOC)

REV.	DESCRIZIONE MODIFICHE	DATA	FIRMA
		1:200	04/10/2022

Britoil Offshore Services S.r.l.
 Piazza della Vittoria 10/7
 16121 - GENOVA - ITALY

APPROV. N°: DATA: F:	BOS PATIENCE - IMO N°9742089	DIS. N° VPI-000-003
APPROV. N°: DATA: F:		TAV. 1/1 FILE: tekniconsulting.com

GENERAL ARRANGEMENT