



# BOS Principle

## 80m | DP 2 | PSV

**Class Notation:** Offshore Support Vessel – heavycargo – chemical product; oil recovery ship - flash point >60°C; fire-fighting ship – 1 – water spraying; unrestricted navigation; AUT-UMS; Biosafe Ship; Cargo Handling; Dynapos AM/AT R; Efficient ship 10, 3831; Green Star 3; Inwatersurvey; SPS

### Main Particulars

Vessel Name	BOS Principle
Flag	Gibraltar
IMO Number	9720744
Call Sign	ZDPO5
Year Built	2016
Gross Tonnage	3,548T
Net Tonnage	1,196T

### Dimensions

Length Overall	80.00m
Length between Perpendicular	72.38m
Breadth Moulded	18.40m
Depth from Main Deck	7.80m
Max Draught	6.35m
Design Draught	6.00m
Freeboard at Max Draught	1.45m
Clear Deck Space	750m <sup>2</sup>

### Capacities & Tonnage

Fuel Oil Cargo	860m <sup>3</sup>
Fresh Water	730m <sup>3</sup>
Mud/Brine	816m <sup>3</sup>
Ballast/Drill Water	1,442m <sup>3</sup>
Dry Bulk	226m <sup>3</sup> (4 x 2000cuf)
Deck Strength	7T/m <sup>2</sup>
Deadweight at max draught	3,800T
Foam	27m <sup>3</sup>
Detergent	27m <sup>3</sup>
Fresh Water Maker	2 x 10T per day

### Discharge Rates

Fuel Oil Cargo Pump	150m <sup>3</sup> /hr @ 80m head
Fresh Water Pump	150m <sup>3</sup> /hr @ 80m head
Mud/Brine Pump	2 x 75m <sup>3</sup> /hr @ 80m head
Ballast/Drill Water Pump	100m <sup>3</sup> /hr @ 80m head
Dry Bulk	40m <sup>3</sup> /h

### Machinery

Main Engines	2 x MAK 2400 KW
Main Generators	3 x 500KW diesel driven
Propulsion System	Twin CPP rudder azimuth thrusters 6500BHP
Emergency Generators	1 x 95KW diesel driven
Shaft Generator	2 x Leroy Somer 1230KW ME driven
Bow Thrusters	2 x 12 tons (800KW), electric driven

### Deck Machinery

Deck Cranes	3 tonnes SWL @ 10m
Tugger Winches	2 x 10 tonnes @ 24m/min
Windlass/Mooring Winch	2 x 13 tonnes @ 18/min
Capstan	2 x 10 tonnes @ 25m/min

### Dynamic Positioning System

DP Class	Class 2
System	Kongsberg K-Pos DP21
References	DGNSS 1 - Kongsberg DPS112 DGNSS 2 - Kongsberg DPS110 1 x Cyscan

### Fire Fighting

Fire Fighting Class	Fifi – 1
Pumps	3000 m <sup>3</sup> per hr
Monitors	2 x 1200 m <sup>3</sup> per hr
Throw x Height	120 m x 45 m

### Life Saving

Liferafts	6 x 25 men and 2 x 15 men
Rescue Boat	1 x 6 men with 25HP OBM

### Navigation Equipment

Radar No. 1	Furuno FAR-2117-D, X-Band
Radar No. 2	Furuno FAR-2137S-D, S-Band
GPS	2 x Furuno, GP-150
Echo Sounder	Furuno, FE-700
Auto Pilot	Anschutz PilotStar D
Gyro Compass	3 x Anschutz Gyro
Magnetic Compass	Anschutz Magnetic Standard 22

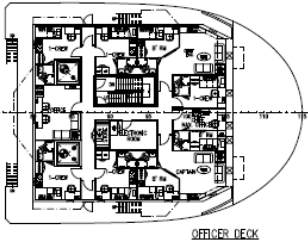
### Communication Equipment

HF radio	Furuno Model RC-1800T
VHF Radio	Furuno FM-8800S
Portable VHF Radio	3 x McMurdo Model R2 GMDSS
Satellite EPIRB	McMurdo Model SMARTFIND E5
Inmarsat	Inmarsat-C with EGC
Navtex Receiver	Furuno NX-700A (GMDSS)
SART	2 x McMurdo S4 Rescue SART
Automatic Identification System (AIS)	Furuno FA-150

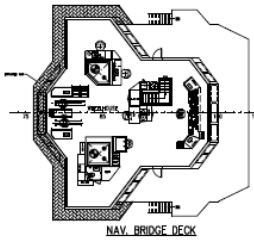
### Accommodation

1-man x 12	14 men
2-men x 20	38 men
<b>Total</b>	<b>52 men</b>

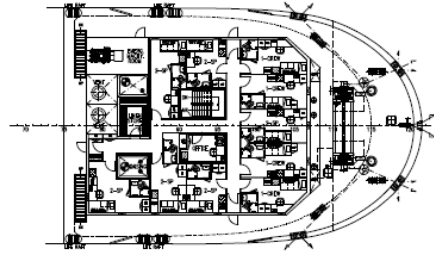
# KC-35HL PSV



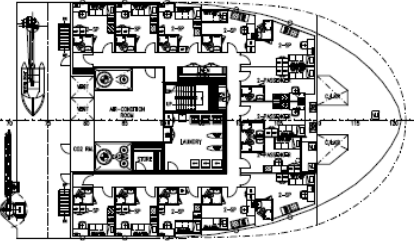
OFFICER DECK



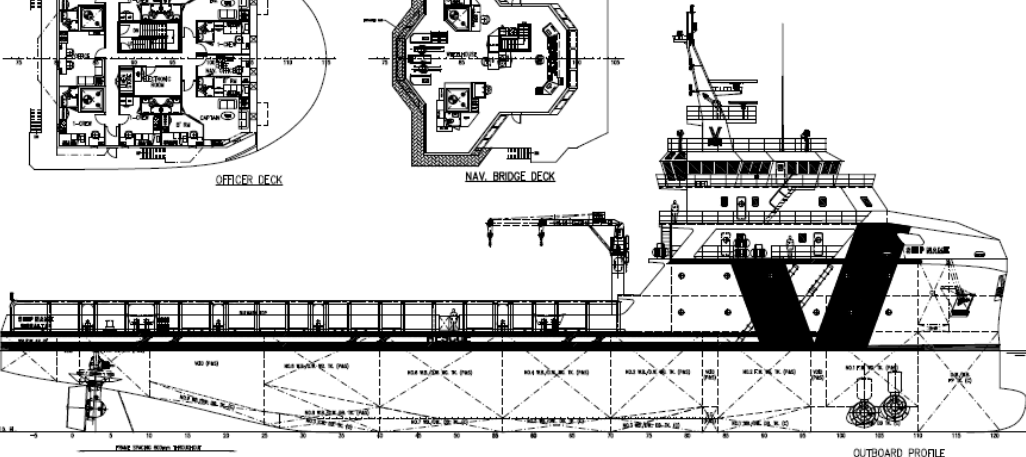
NAV. BRIDGE DECK



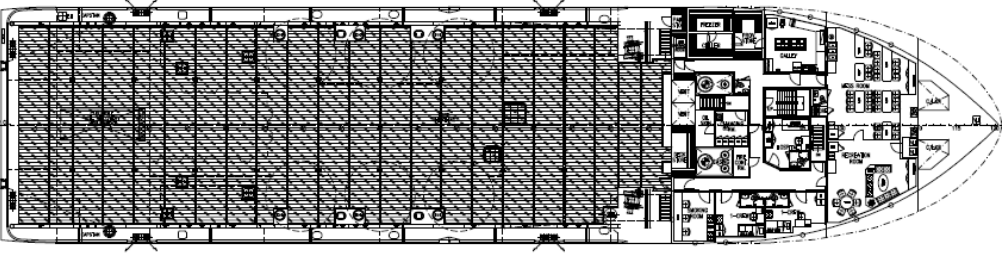
UPPER FORECASTLE DECK PLAN



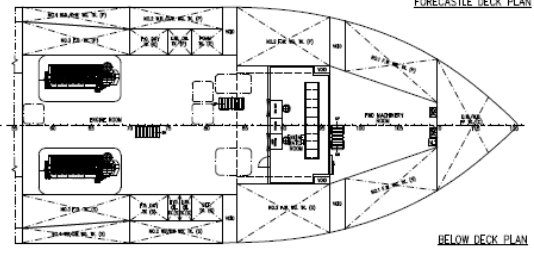
FORECASTLE DECK PLAN



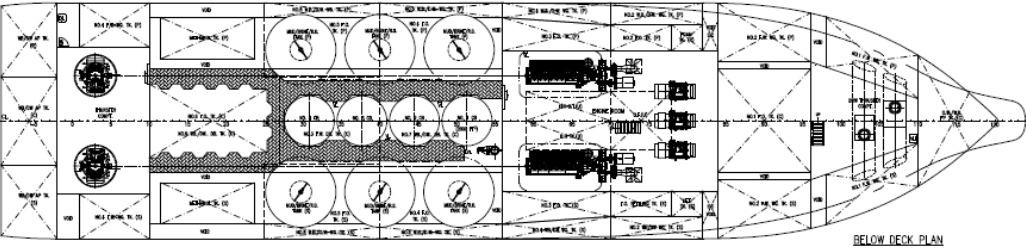
OUTBOARD PROFILE



MAIN DECK PLAN



BELOW DECK PLAN



BELOW DECK PLAN

**PRINCIPAL DIMENSIONS**

LENGTH (O.A.)	80.00 M
LENGTH (S.P.)	72.38 M
BEAM (MID.)	16.40 M
DEPTH (MID.)	7.80 M
MAX. DRAUGHT (MID.)	4.10 M
TOTAL DWT	3750 TONS
FUEL	800 M <sup>3</sup>
FRESH WATER	550 M <sup>3</sup>
MISD/DRINK. P.R.	750 M <sup>3</sup>
METANOL	200 M <sup>3</sup>
DECK AREA	700 M <sup>2</sup>
DECK CARGO (DECK LOADING = 77/M <sup>2</sup> )	1500 TONS
DRY BULK TANKS (A+2000 FT+3000 FT)	226 M <sup>3</sup>
MAIN PROPULSION	2 X 2400 KW
SPEED (TRIALS)	13.0 KNOTS
COMPLEMENT	14 MEN
CHIEF	14 MEN
SPECIAL PERSONNEL	32 MEN
PASSENGER	6 MEN

**M.M. "YOS PRINCE"**  
 APPROVED BY ABS ON 25-06-15

THIS DOCUMENT AND THE INFORMATION IT CONTAINS IS CONFIDENTIAL AND REMAINS THE PROPERTY OF CHUAN KHIAN MARINE PTE. LTD. IT IS NOT TO BE COPIED OR REPRODUCED IN ANY FORM OR BY ANY MEANS WITHOUT THE WRITTEN PERMISSION OF CHUAN KHIAN MARINE PTE. LTD.

SHIP NAME		SHIP NO.	
SHIP TYPE		SHIP CODE	
GENERAL ARRANGEMENT			
OWNER	DESIGNER	SCALE	DRAWING NUMBER
CHUAN KHIAN MARINE PTE. LTD.	KHIAN CHUAN MARINE PTE. LTD.	1:150	KDM/0692(B)-01
DATE	REVISED	SCALE	REV.
24-07-15			