



BRITTOIL DEFENDER

9000 BHP | 85 TBP | DP2 AHTS

Class Notation: Lloyd's Register of Shipping (to be changed to ABS)

✕ 100A1, Offshore Supply/ Anchor Handling/ Tug, Fire Fighting Ship Type 2 (7,200m3); ✕ LMC, DP(AA), BWTS*, ShipRight (BWMP(T))

Main Particulars

Flag	Panama (to be changed to Tuvalu)
Call Sign	3FBF7
IMO No.	9503043
Year Built	2012
Gross Tonnage	3,161 T
Net Tonnage	948 T
Deadweight (Max Draught)	1,965.16 T

Dimensions

Length Overall	76.00m
Breadth Moulded	16.80m
Depth Moulded	7.50m
Max Summer Draft	6.10m

Cargo Deck

Deck Cargo Area	627m ²
Deck Cargo Dimension	41.25m x 15.2m
Deck Cargo Capacity	1,200T
Deck Strength	10T/m ²

Capacities

Fuel Oil	900 m3
Potable Water	300 m3
Drill Water	740 m3
Methanol	403 m3
Base Oil	310 m3
Brine	790 m3

Discharge Rates

Fuel Oil	2 x 150 m3/hr @ 80 m head
Potable Water	2 x 150 m3/hr @ 80 m head
Drill Water	1 x 150 m3/hr @ 80 m head
Methanol	2 x 80 m ³ /hr @ 95 m head
Base Oil	2 x 100 m3/hr @ 80 m head
Brine	2 x 150 m ³ /hr @ 80 m head

Main Engines & Generators

Main Engine	2 x Yanmar 8N 330EN @ 4,500 BHP each 9000 BHP
Generator	6 x 590 KW 240/440V, 3 Phase, 60Hz
Emergency Generators	1 x 150 KW/ 440V/ 60Hz

DP System

DP-2 System	2 x DP 11 L3 Communication NMS6000 System;
...	1 x RADAR Scan
...	1 x Radius 1000

Propulsion

Bow Thruster	2 x CPP 550 kW, 9.3 T Thrust
Stern Thruster	2 x Azimuth Kawasaki Rexpeller KST 240 ZC/B
Propeller	2 x Kawasaki Rexpeller KST 240 ZC/B CPP
Bollard Pull	Approx 85.0 T

Deck Equipment

Anchor Windlass	1 x 11 T, Brattvaag
Anchor Chain	2 x 20 shackles U3 stud link 42 mm (0)
Anchor (Bow)	2 x AC 14 high holding powers @ 2,000 kg+
Tugger Winch	2 x 10 T @ 13 m/min, Brattvaag
Capstan	2 x 10 T @ 25 m/min, Brattvaag
Deck Crane	1 x 5.0MTHydralfit GPK 15-6-12, SWL: 6 MT and 12 m boom maximum outreach

Anchor Handling/Tow Equipment

AH Winch	350 T Brake, 250 T Pull Brattvaag Waterfall Type SL250W/BSL250W
AH Drum Capacity	1,800 m x 76 mm (0)
Towing Winch	350 T Brake, 250 T Pull Brattvaag Waterfall Type SL250W/BSL250W
Tow Drum Capacity	1,800 m x 76 mm (0)
Storage Reel Drum Capacity	2 x 2,000 m x 76 mm (0)
Shark Jaws	3 x Shark Jaws, SWL: 200 T
Tow Pin	1 x Tow Pin, SWL: 200 T
Stern Roller	5.40 m x 2.6 m (0), SWL: 350 T

BRITTOIL DEFENDER

9000 BHP | 85 TBP | DP2 AHTS

Navigation and Communication Equipment

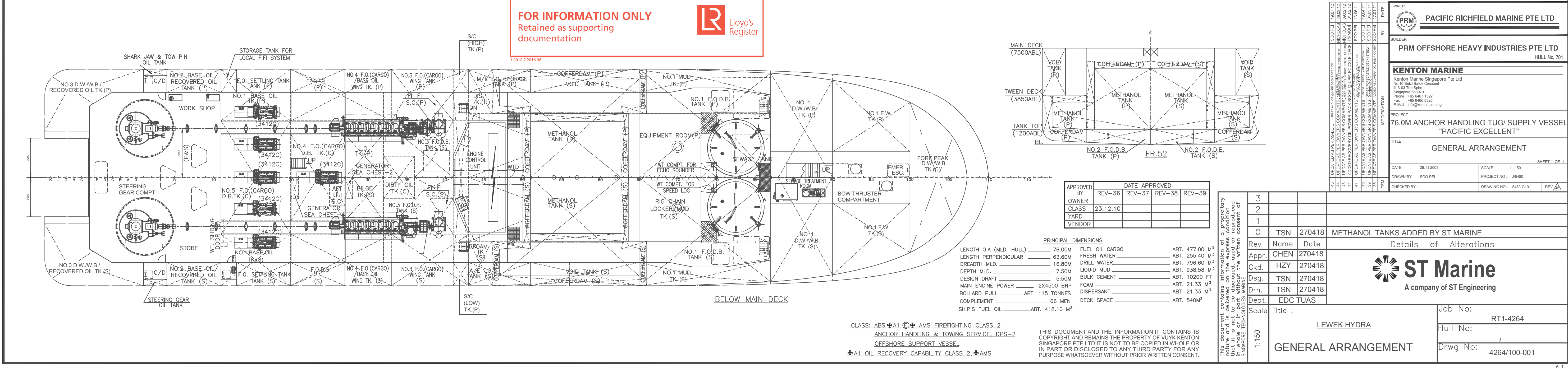
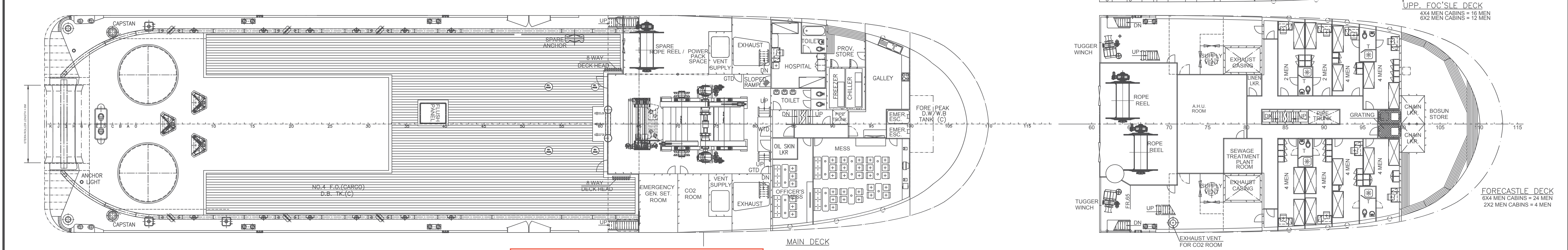
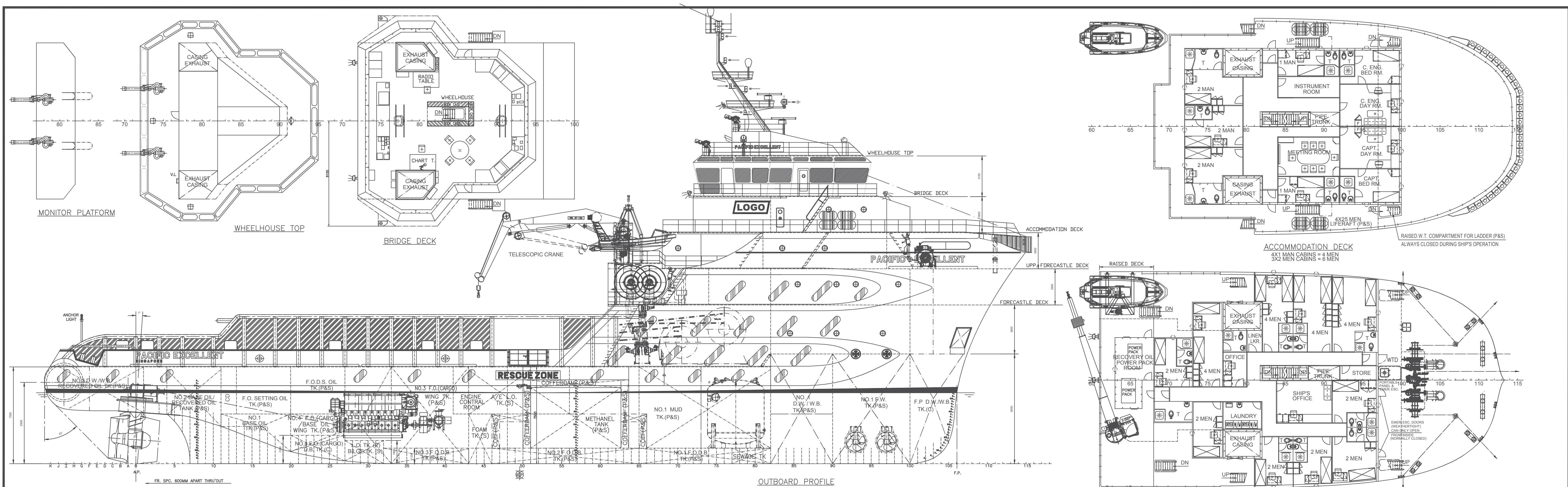
GMDSS (Area 3)	Sailor Sysytem 5000 GMDSS A3 250 W model HX 4500
VHF	2 x Sailor 25 W model 6222
SSB	1 x Sailor SSB 150W low ban channel
Navtex Receiver	1 x JMCNT-200
Inmarsat	1 x Fleet Broad Band Sailor 5000
Radar (X-Band)	1 x Decca Bridge Master FT340X
Radar (S-Band)	1 x Decca Bridge Master FT340S
Gyro compass + Repeater	3 x Sperry Marine Gyro Navigat XMK1 plus 1 repeater
Magnetic Compass	1 x Sperry Marine C Plath Refelctor Binnacle Navipol
Auto Pilot	1 x Kawasaki KIC1000-1020 CZRC
GPS	2 x Sperry Marine MX512 12 channel DGPS
Joystick	1 x Kawasaki KICS1000 -1020CZRC
Echo Sounder	1 x Sperry Marine ES5100-1
Speed Log	1 x Sperry Marine Naviknot 350E, NF
Voyage Data Recorder	1 x Danalec DM400
Weather Facsimile	1 x Sperry Marine
LRIT	1 x Sailor TT300SSA
Radio Direction Finder.	1 x Sailor

Safety, Fire Fighting & Anti Pollution

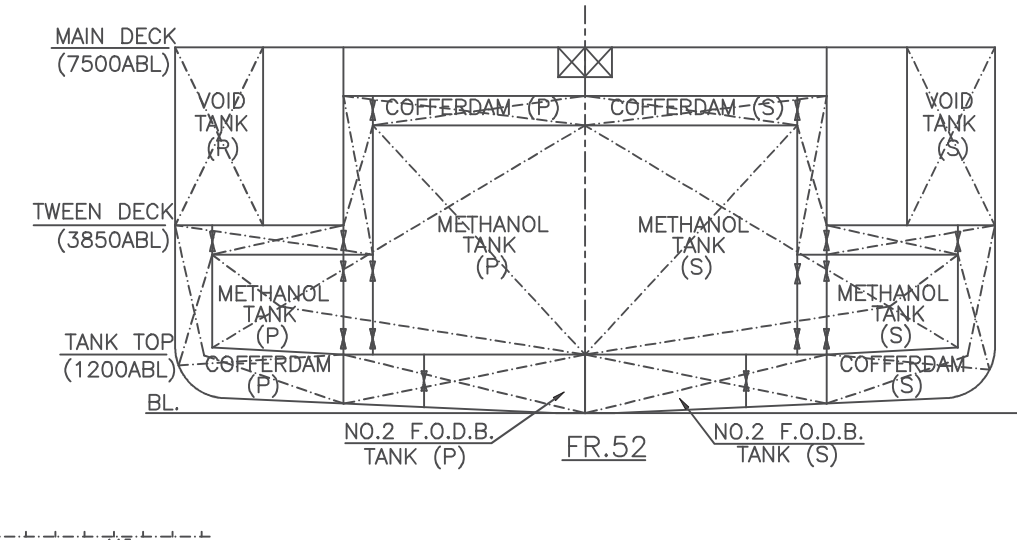
FIFI Class (2) with Water Spray Pump	2 x 3,600 m3/hr @ 200 m head
Monitor (water / foam)	4 x 1,800 m3/hr / 300 m3/hr @ 12.5 bar
Spray Boom	2 x 6 m Spray Boom
Life Raft (per SOLAS)	2 x 25 persons, 2 x 20 men
Rescue Boat	1 x 10 persons, Seabear 23MKII FRC, with 1 x Yanmar Diesel Engines @230BHP
Davit	1 x HL9D MOB-3500
Rescue & Recovery	Dacon Scoop System

Accommodation

Cabins	4 x 1 bed; 15 x 2 beds; 8 x 4 beds
	Total 66 beds
Hospital	1 bed



FOR INFORMATION ONLY
Retained as supporting documentation



APPROVED BY	REV-36	REV-37	REV-38	REV-39
OWNER				
CLASS	23.12.10			
YARD				
VENDOR				

PRINCIPAL DIMENSIONS	
LENGTH O.A. (M/D. HULL)	76.00M
LENGTH PERPENDICULAR	63.60M
BREADTH MLD.	16.80M
DEPTH MLD.	7.50M
DESIGN DRAFT	5.50M
MAIN ENGINE POWER	2X4500 BHP
BOLLARD PULL	115 TONNES
COMPLEMENT	66 MEN
SHIP'S FUEL OIL	418.10 M ³
FUEL OIL CARGO	477.00 M ³
FRESH WATER	256.40 M ³
DRILL WATER	796.60 M ³
LIQUID MUD	938.58 M ³
BULK CEMENT	10200 FT
DISPERSANT	21.33 M ³
DECK SPACE	450 M ²

This document contains information that is not to be disclosed, used or reproduced without the written consent of ST Marine.

Rev.	Name	Date	Details of Alterations
0	TSN	270418	METHANOL TANKS ADDED BY ST MARINE.
1			
2			
3			



Scale: 1:150
 Title: GENERAL ARRANGEMENT
 Job No: RT1-4264
 Hull No:
 Drwg No: 4264/100-001

PACIFIC RICHFIELD MARINE PTE LTD
PRM OFFSHORE HEAVY INDUSTRIES PTE LTD
KENTON MARINE
 Kerton Marine Singapore Pte Ltd
 #13-01 The Square
 Singapore 606017
 Phone: +65 6887 1022
 Fax: +65 6461 9325
 E-Mail: info@kerton.com.sg

76.0M ANCHOR HANDLING TUG/ SUPPLY VESSEL "PACIFIC EXCELLENT"
GENERAL ARRANGEMENT
 DATE: 26.11.2003 SCALE: 1:150 SHEET 1 OF 1
 DRAWN BY: 900 PEI PROJECT NO.: J5480
 CHECKED BY: DRAWING NO.: 4480-G101 REV: