



BRITOIL COMMANDER

8,050 BHP | 85 t BP | DP2 AHTS — DIESEL-ELECTRIC

ABS Class Notation: A1, Offshore Support Vessel (AH, FFV 1, Supply-HNLS, TOW), AMS, ACCU, DPS-2
Additional Notation: CRC(I), ENVIRO, OSR-C1

Main Particulars	
Particular	Detail
Flag	Singapore
IMO	9619024
Built	2012
Length Overall	65.8 m
Depth	6 m
Breadth (Moulded)	16 m
Design Draft	4.3 m
Max Draft	5.1 m
Gross Tonnage	2,210 t
Deadweight (Max Draught)	1,901 t

Machinery & Propulsion	
Component	Specification
Main Diesel Generators	3 × 2,000 kW @ 1,800 rpm; 3-phase 480 V AC, 60 Hz
Propulsion Thrusters	2 × 1,685 kW L-drive FPP in nozzles; 360° azimuth
Stern Thruster	1 × 1,685 kW L-drive FPP in nozzle; fixed
Bow Thrusters	2 × 560 kW FPP bow thrusters
Emergency / Harbour Generator	1 × 276 kW

Deck & Anchor Handling Equipment	
Equipment	Rating / Size
AH / Towing Winch	Towing / anchor-handling electro-hydraulic high-pressure winch with 2 drums in waterfall arrangement
- Drum Size	Ø900 / Ø2,250 mm × 1,800 mm length
- Drum Capacity	1,500 m × Ø56 mm steel wire and 1,100 m × Ø64 mm steel wire (each drum)
- Rated Pull	150 t on 1st layer @ 0-8.5 m min ⁻¹ (each drum)
- Brake Holding Load	250 t on 1st layer
Cable Lifters	1 × 2.5" + 1 × 3" chain lifter
Stern Roller	Ø1,500 mm × 4,000 mm; 250 t SWL
Deck Fittings	Standard mooring bollards / bitts as fitted
Capstans	2 × 5 t
Deck Crane	1 × telescopic boom crane, 3 t @ 16 m outreach
Anchor Windlass	1 × 10.7 t
Tugger Winches	2 × 10 t

Deck Crane	
Crane	Rating / Reach
Deck Crane	1.8 t @ 6 m

Accommodation	
Item	Capacity
Single Cabins	4
2-man Cabins	11
Total Accommodation	26
Public Spaces	1 Mess Room 2 Day Rooms 1 Galley 1 Office 1 Hospital/Sick Bay (1 Berth)
Air-conditioning	Fully air-conditioned

Performance		
Mode	Speed	MGO Consumption
Maximum speed	13.4 kn	22.0 t d ⁻¹
Service speed	12.0 kn	14.7 t d ⁻¹
Service speed	10.0 kn	8.8 t d ⁻¹
Eco speed	8.0 kn	6.2 t d ⁻¹
DP station keeping	—	5.0 t d ⁻¹
Standby at sea	—	2.5 t d ⁻¹
Standby in port (harbour generator)	—	0.8 t d ⁻¹
*subject to weather and operating conditions		

Tank Capacities & Discharge Rates		
Tank / Consumption	Capacity	Discharge Rate
Fuel Oil	752 m ³	2 × 150 m ³ h ⁻¹ @ 7 bar / 70 m head
Fresh Water	443 m ³	150 m ³ h ⁻¹ @ 7 bar / 70 m head
Ballast / Drill Water	1,091 m ³	150 m ³ h ⁻¹ @ 7 bar / 70 m head
Liquid Products Tanks	692 m ³	2 × 75 m ³ h ⁻¹ @ 18 bar / 180 m head (liquid mud transfer)
Dry Bulk / Cement	193 m ³	2 × 22 m ³ min ⁻¹ (compressor flow) @ 6 bar / 60 m
Foam (FiFi system)	11 m ³	—
*Liquid mud tanks fitted with hydraulic agitators and fixed hot-water washing system		

Cargo Deck	
Parameter	Value
Clear Deck Area	400 m ²
Deck Cargo Capacity	1,000 t

Dynamic Positioning (DP) System & Navigation Equipment	
Instrument	Detail
DP Notation	DP Class 2
Reference Systems	2 × DGPS, 1 × Radscan
GMDSS	Radio system compliant with GMDSS A3 rules
Satellite Communications	VSAT, FBB500, Inmarsat C
Data and voice	Email and IP voice facilities

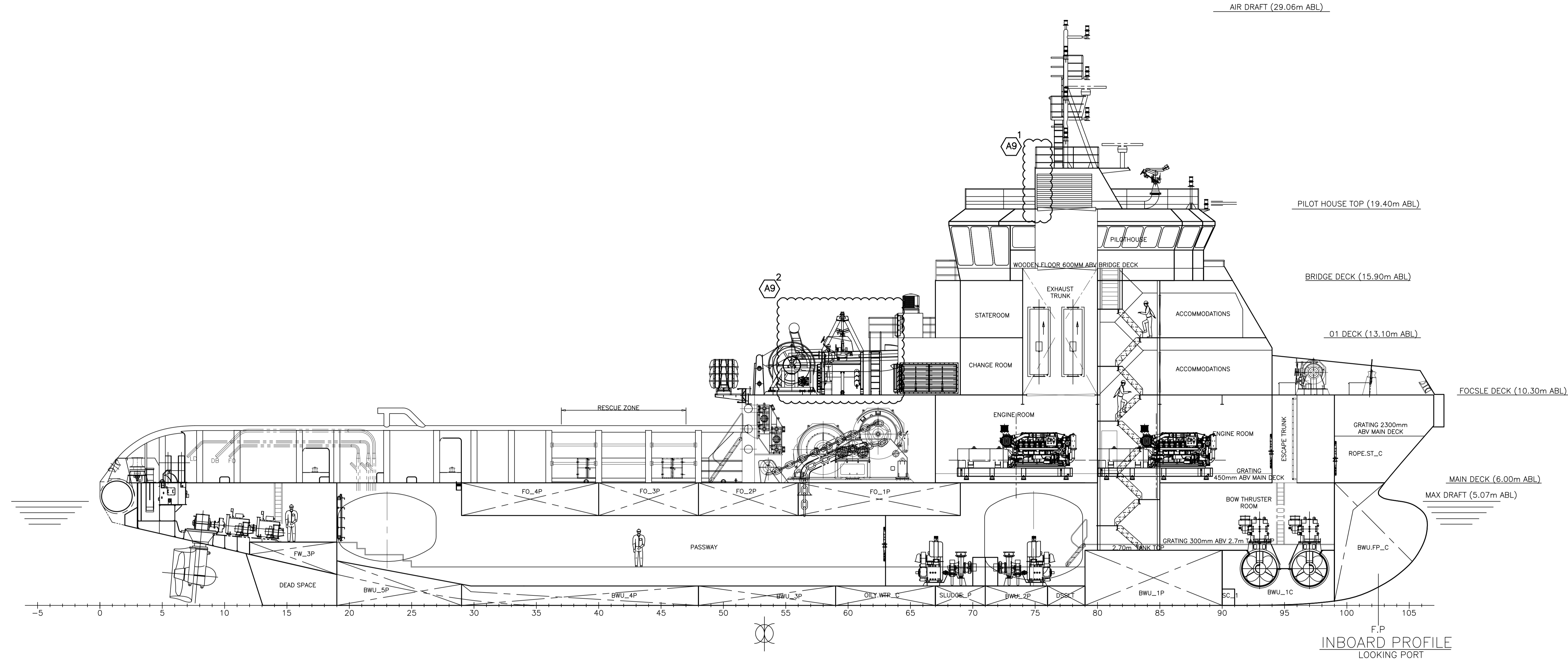
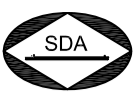
Communications Equipment	
Instrument	Detail
GMDSS Area	A3
GMDSS Installation	Radio system compliant with GMDSS A3 rules
Satellite Communications	VSAT; FleetBroadband 500 (FBB500); Inmarsat C
Data / IP Telephony	Email and IP voice facilities
MF / HF Radio	Included in GMDSS A3 radio system

Fire-Fighting & Rescue	
Equipment	Capacity / Rating
FiFi Class	FiFi 1
FiFi Pumps	2 × 1,650 m ³ h ⁻¹
FiFi Monitors	2 × 1,200 m ³ h ⁻¹
FiFi Foam Tank	11 m ³ foam tank
Water Spray/Protection	Foam and water-spray protection to vessel
Rescue Boat	1 × fast rescue boat (10 persons) with davit
Life Rafts	6 × 16-person life rafts (3 each side)
Lifejackets/Immersion Suits	Life jackets and immersion suits as per SOLAS
Life Buoys	Life buoys as per SOLAS
Other LSA	Other SOLAS-compliant life-saving appliances

Details given in good faith but not guaranteed. Owners reserve the right to amend specifications without notification.

Britoil Offshore Services Pte Ltd • 100G Pasir Panjang Road, #05-01/02 Interlocal Centre, Singapore 118523 • www.britoil.com.sg

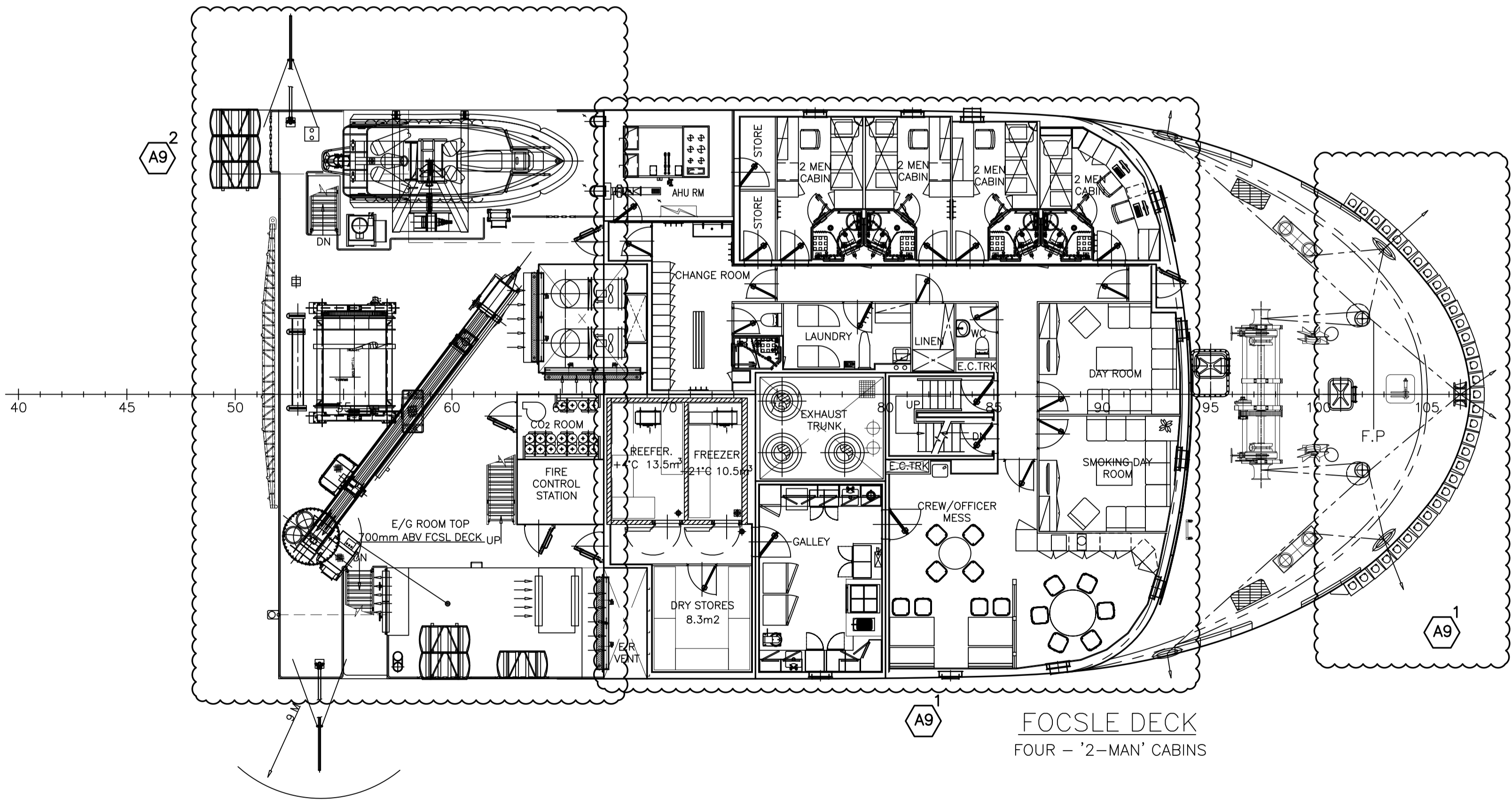
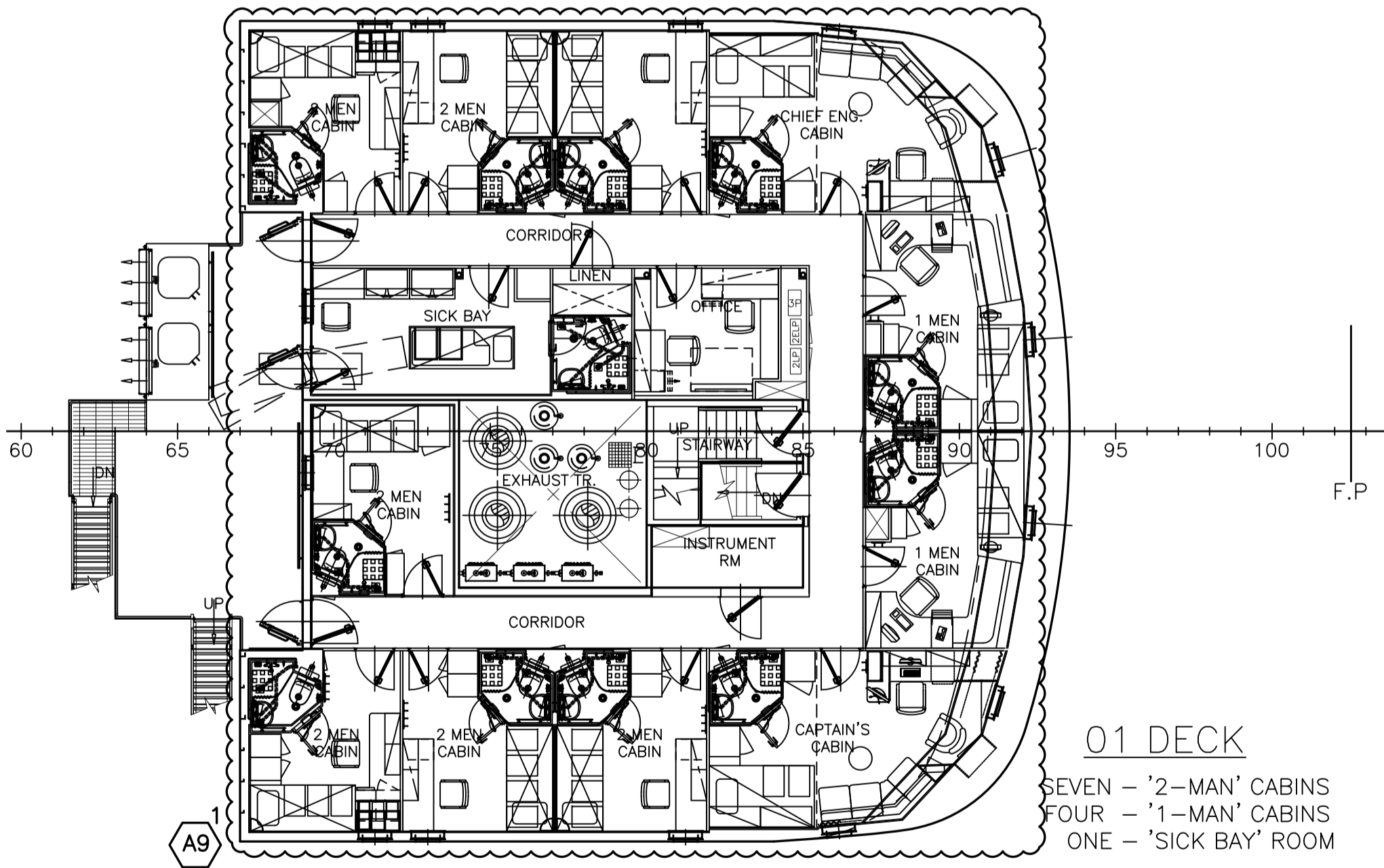
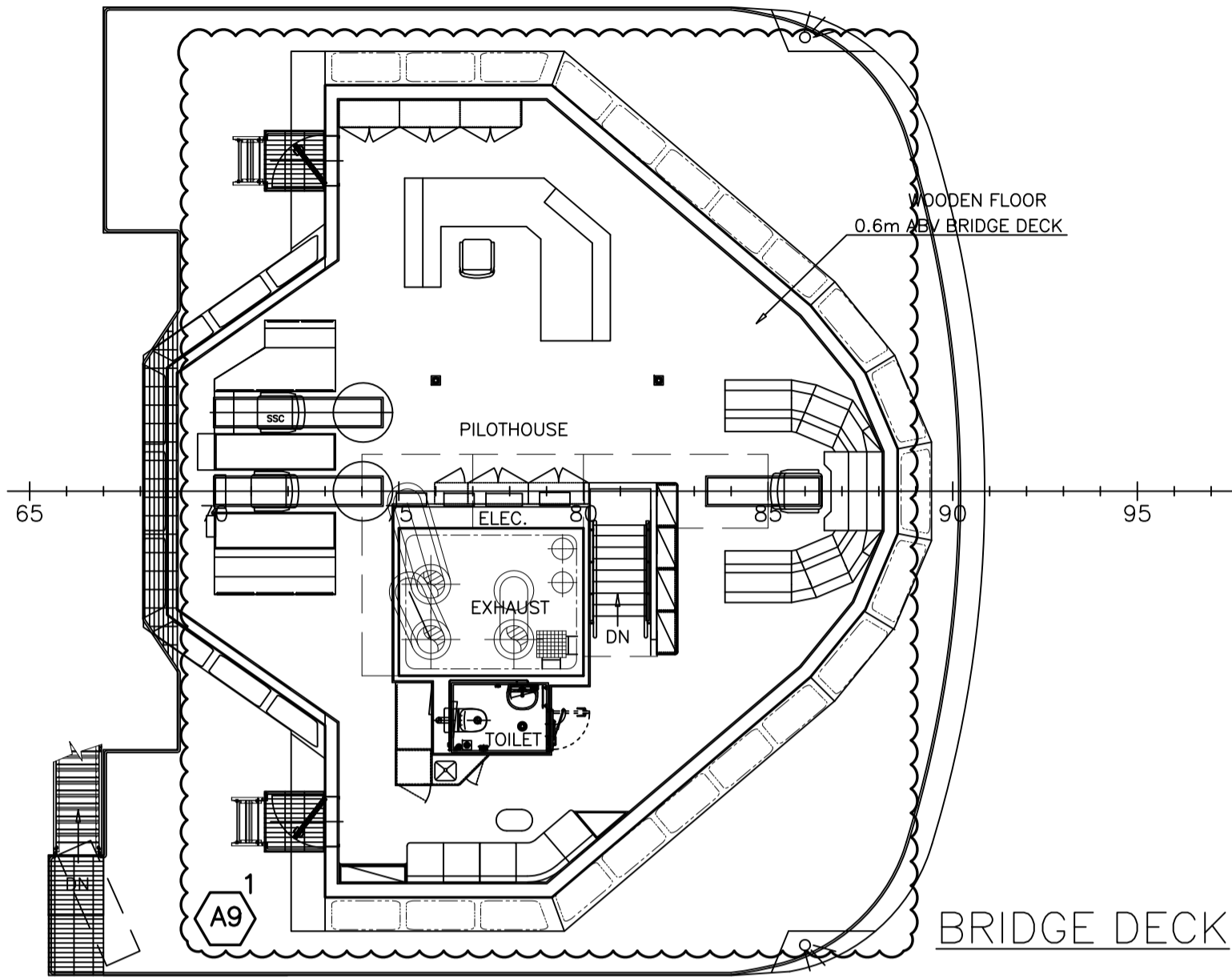
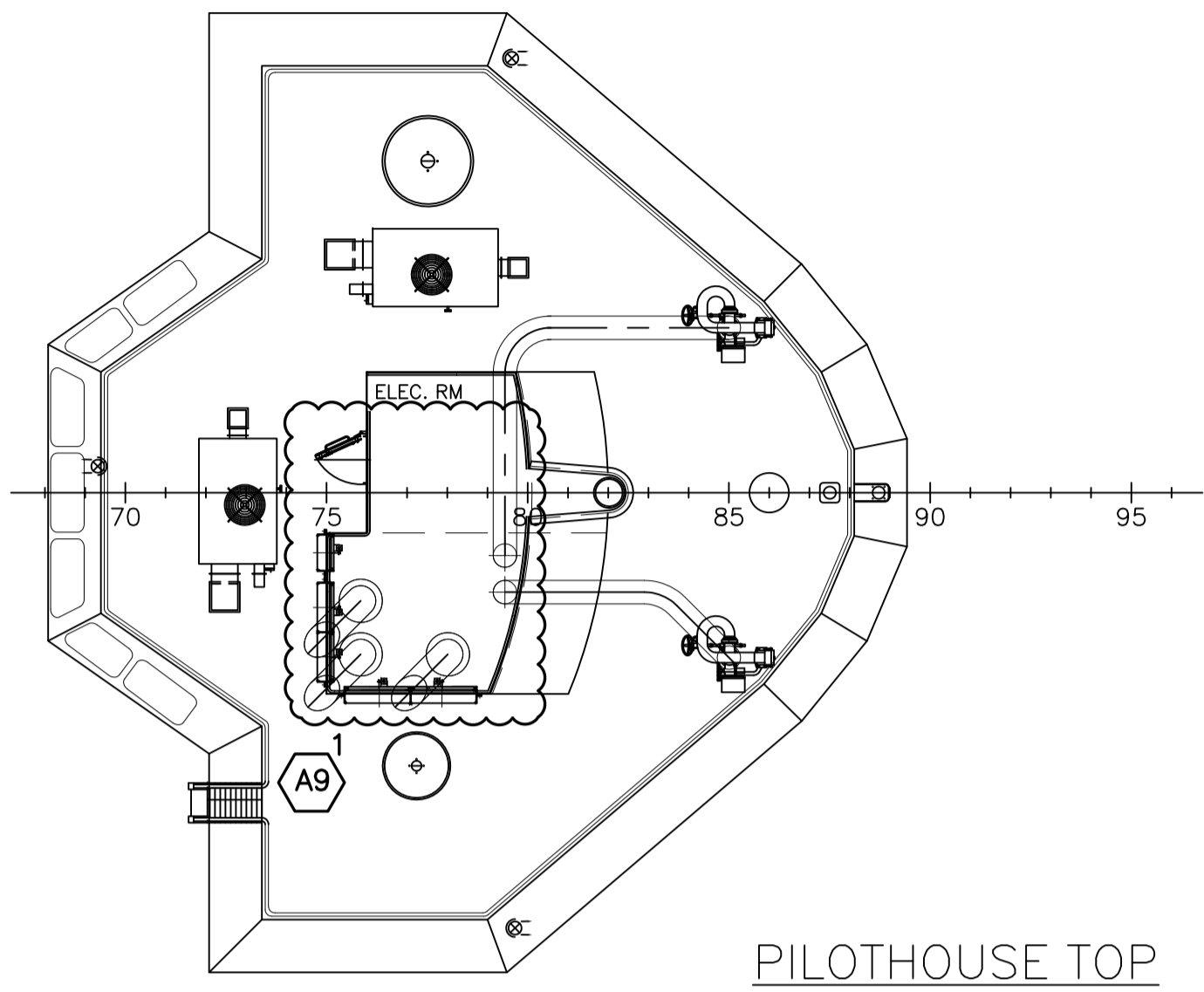
rev 1.1 - 27 January 2026

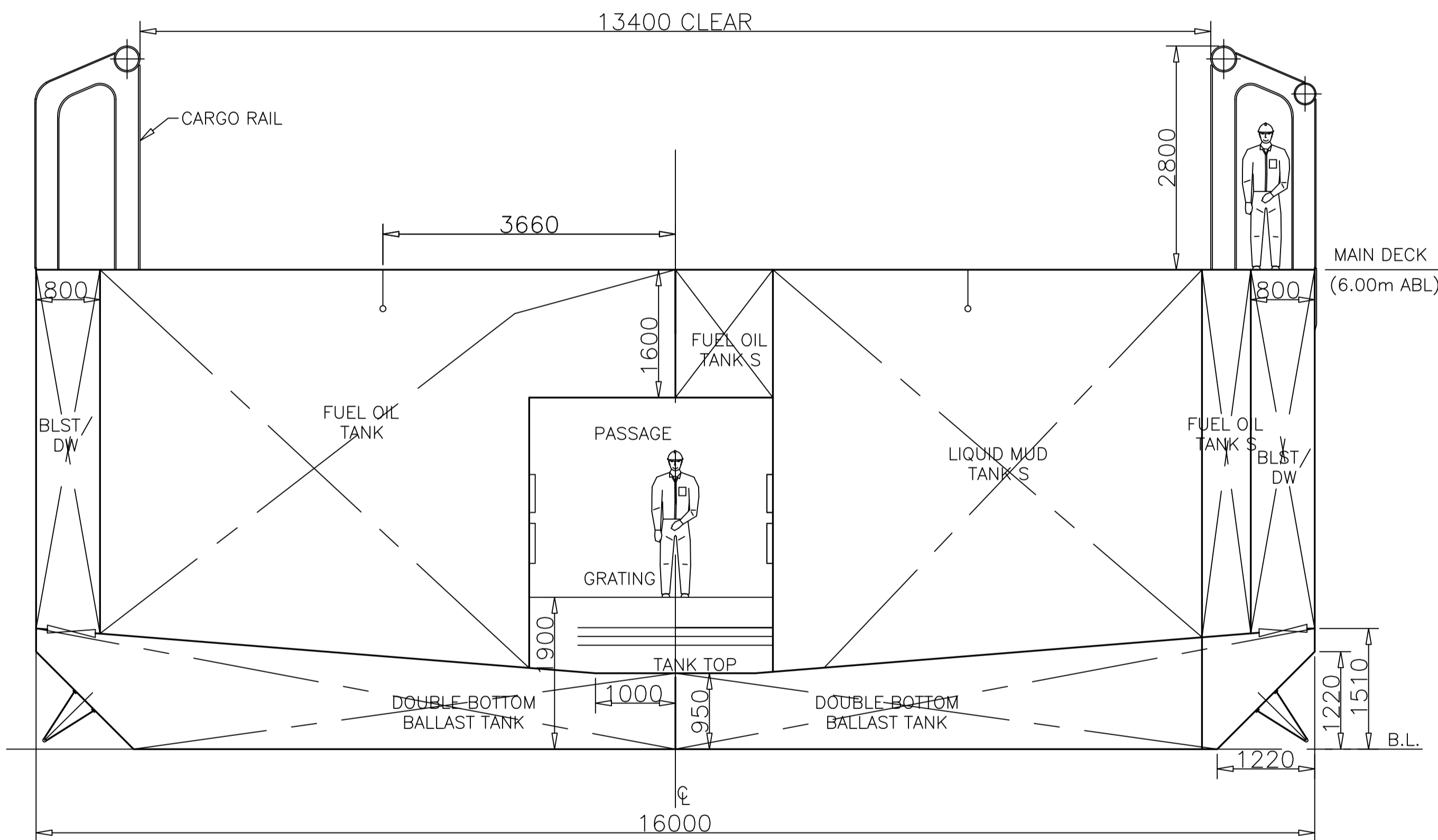
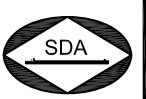


INBOARD PROFILE
LOOKING PORT



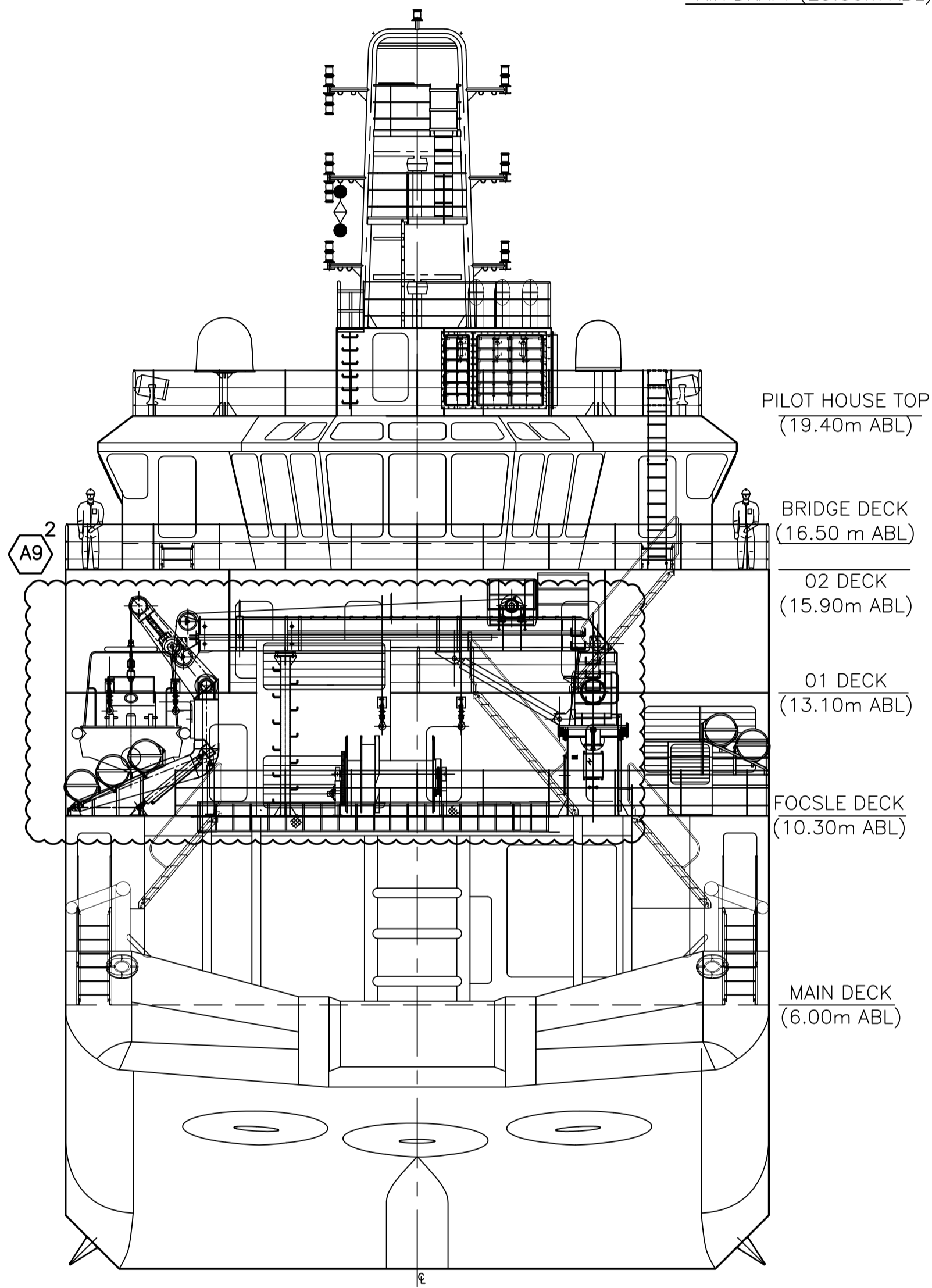






MIDSHIP SECTION
PRINCIPAL DIMENSIONS(1:50)

AIR DRAFT (29.06m ABL)



SECTION PLAN
LKG FWD