



BRITOil DEFIANCE

8,040 BHP | 116 t BP | DP2 AHTS

Class Notation: ~~A~~1, Offshore Support Vessel(AH, FFV 1, OSR-C1, SPS, Supply-HNLS, TOW), ~~C~~, ~~A~~MS, ~~D~~PS-2, BP (116.24 MT), BWT, RW, UWILD

Main Particulars

Item	Detail
Flag	Tuvalu
IMO	9761188
Call Sign	TZAP6
Built	2024
Length Overall	73.0 m
Beam Moulded	17.2 m
Depth Moulded	7.5 m
Max Summer Draft	6.1 m
Gross Tonnage	3,437 t
Net Tonnage	1,031 t
Deadweight	2,200 t

Machinery & Propulsion

Item	Detail
Main Engines	2 x Wärtsilä 6L32, 3,000 kW each
Main Generators	3 x Caterpillar C18, 500 kW, 440 V/60 Hz
Shaft Generators	2 x MJRM 500 MA42, 1,800 kW
Emergency Generator	1 x Cummins QSB7-DM + LSAM44.2, 99 kW
Bow Thrusters	2 x Kawasaki 800 kW / 11 t, electric-driven
Stern Thrusters	2 x Kawasaki 670 kW / 8 t, electric-driven
Propellers	2 x CPP in fixed nozzles

Deck & Anchor Handling Equipment

Item	Detail
Tow / A-H Winch	Rolls-Royce waterfall
Stall Pull	250 t
Brake Holding	300 t
Drum Capacities	1,500 m x Ø 64 mm (tow, A-H & spare)
Tugger Winches	2 x 10 t @ 21 m min ⁻¹
Capstans	2 x 10 t @ 16 m min ⁻¹
Shark Jaws	2 x Karmfork, 300 t SWL
Towing Pins	2 x 300 t SWL
Stern Roller	6.0 m x 2.6 m, 300 t SWL
Deck Crane	3 t SWL @ 10 m outreach

Mooring Equipment

Item	Detail
Anchors	2 x 2,295 kg stockless
Anchor Chain	2 x 495 m x Ø 44 mm
Windlass	2 x 9 t @ 12 m min ⁻¹

Accommodation

Item	Detail
Single Cabins	6
Double Cabins	7
4-Person Cabins	10
Total Berths	60
Hospital	1 bed

Performance

Mode	Consumption	Speed
Max Speed	≈ 22 m ³ day ⁻¹	13 kn
Service Speed	≈ 16 m ³ day ⁻¹	10 kn
Towing	≈ 20 m ³ day ⁻¹	—
Stand-by	≈ 1.2 m ³ day ⁻¹	—

* Subject to actual weather and operating conditions

Tank Capacities

Tank	Capacity	Discharge Rate
Fuel Oil	1,617 m ³ *	2 x 150 m ³ hr ⁻¹ @ 80 m head
Potable Water	610 m ³	1 x 150 m ³ hr ⁻¹ @ 80 m head
Drill Water	1,214 m ³	1 x 150 m ³ hr ⁻¹ @ 80 m head
Liquid Mud/Brine/ORO	634 m ³	2 x 100 m ³ hr ⁻¹ @ 5 bar
Dry Bulk	230 m ³	40 m ³ hr ⁻¹ @ 60 m head
Foam	19.5 m ³	—
Dispersant	19.5 m ³	—

* includes 221 m³ former rig-chain-locker tank and ~634 m³ converted from liquid-mud block

Cargo Deck

Item	Detail
Clear Deck Area	470 m ²
Deck Dimensions	31 m x 15.2 m
Deck Capacity	800 t
Deck Strength	7.5 t m ⁻²

Dynamic Positioning (DP) & Navigation Equipment

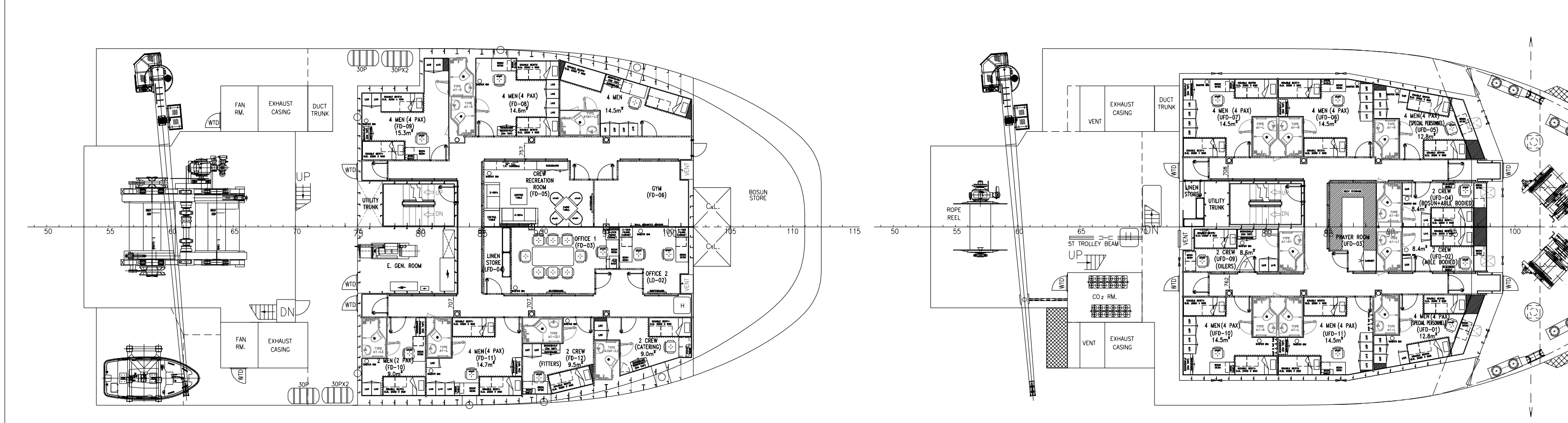
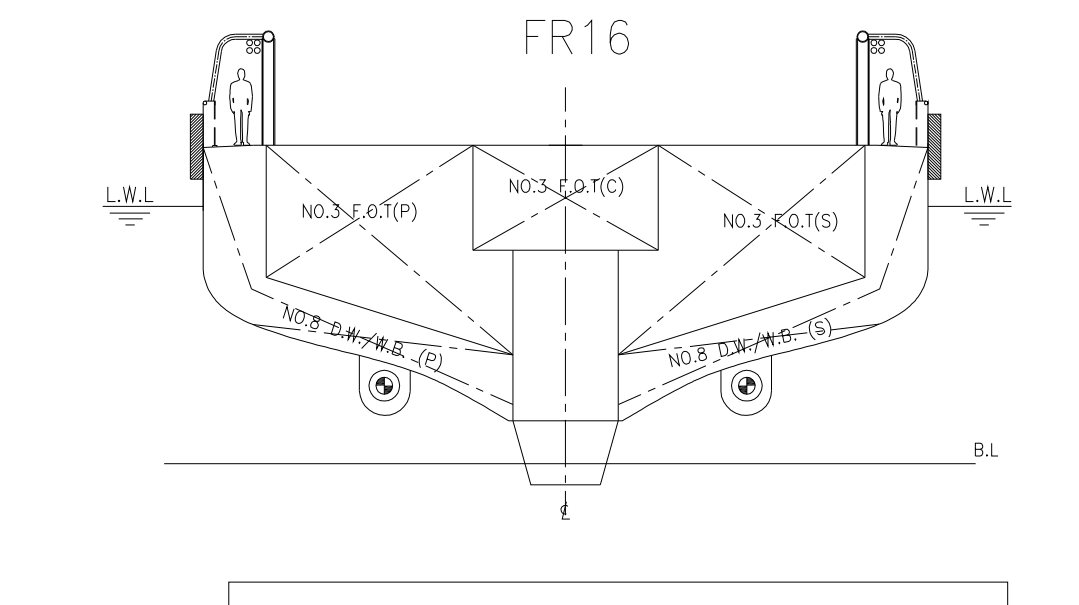
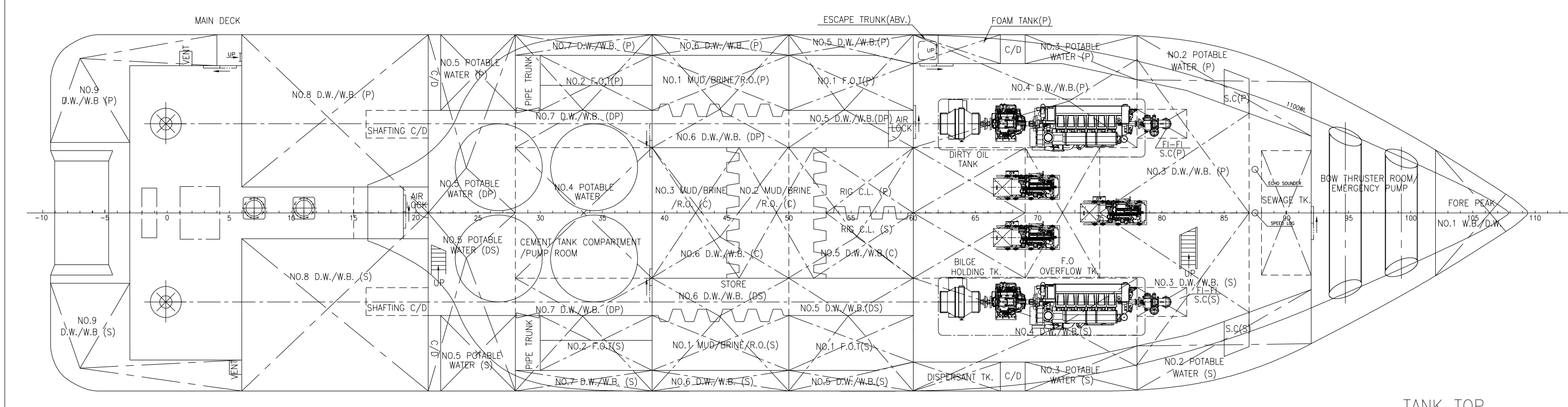
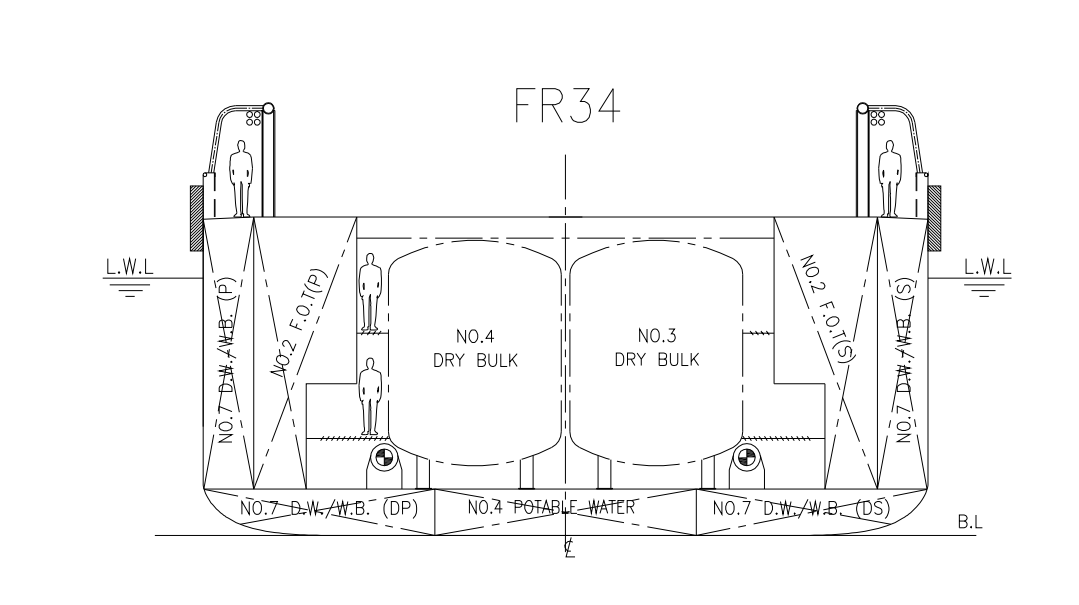
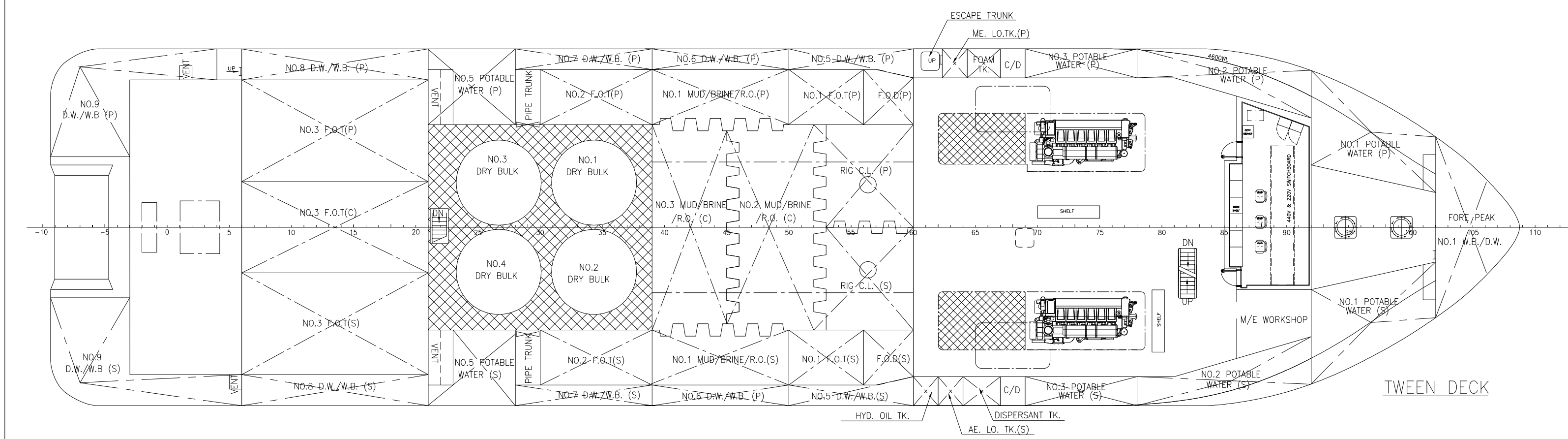
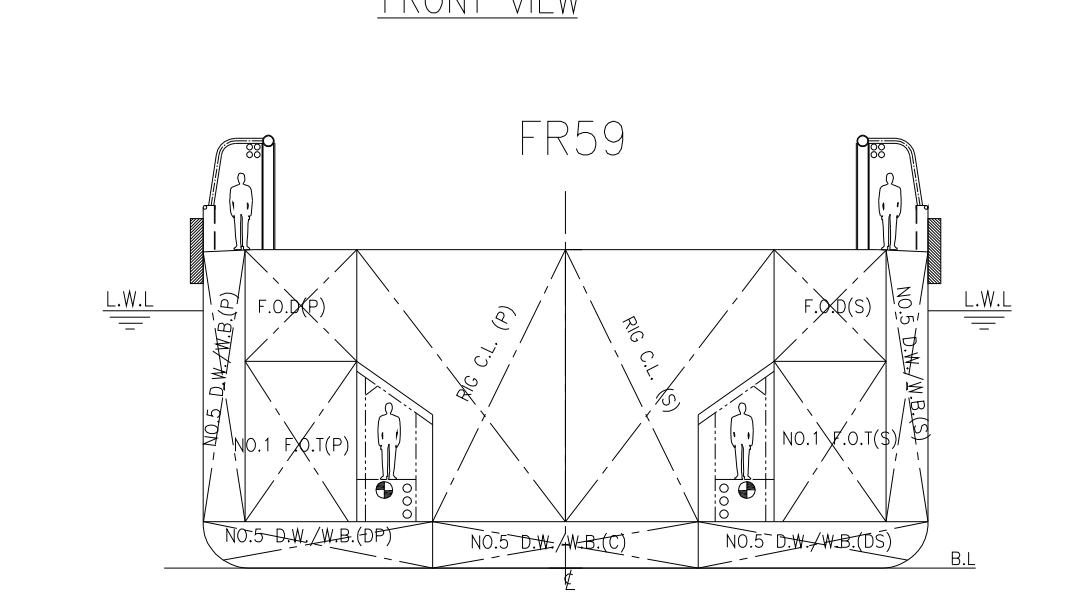
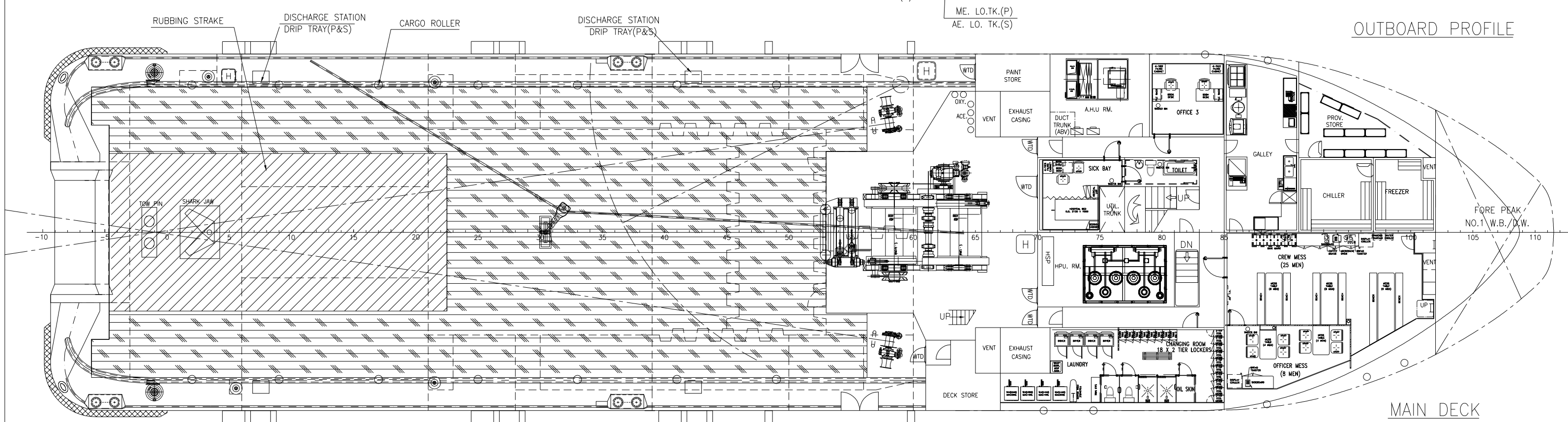
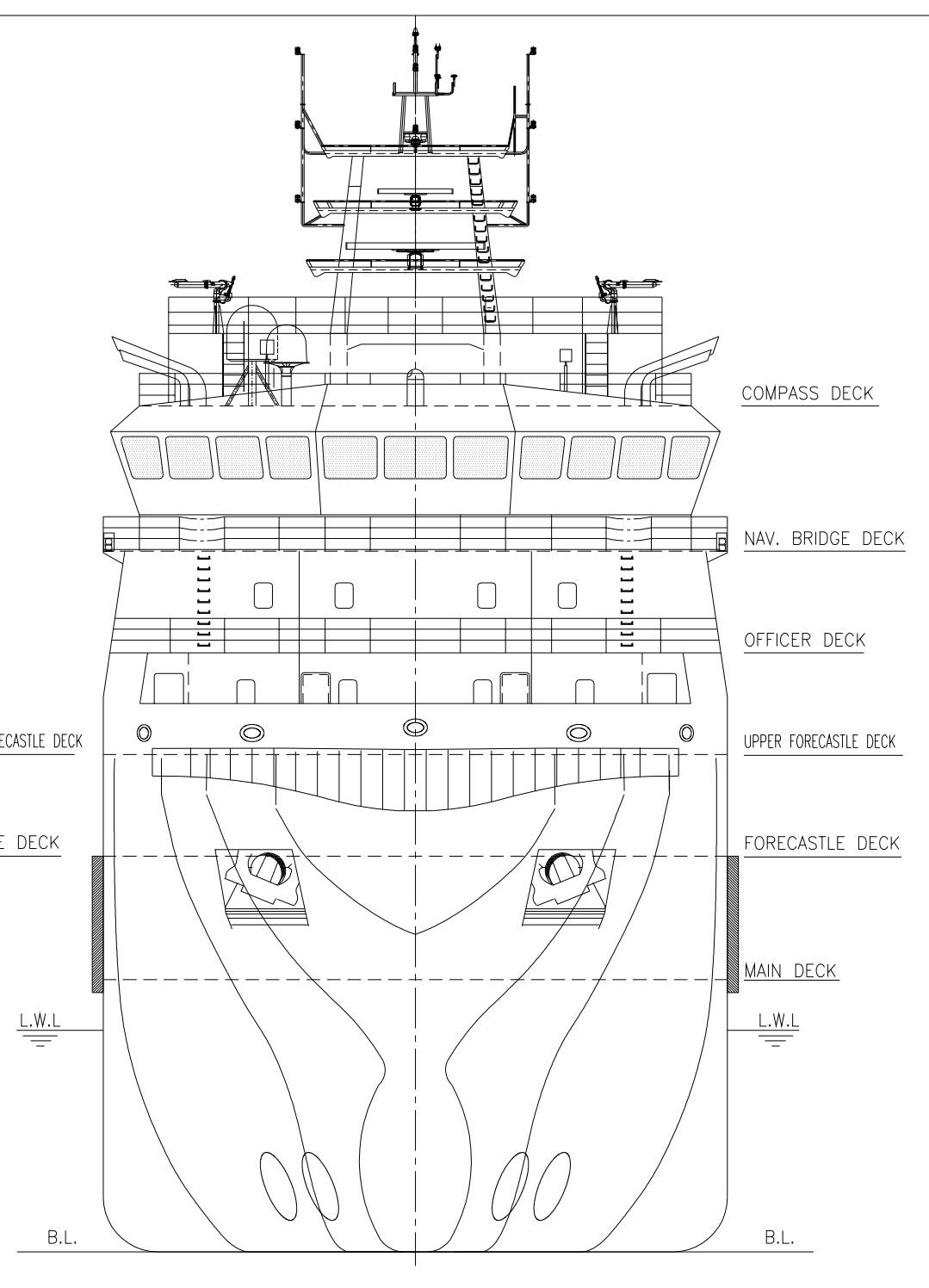
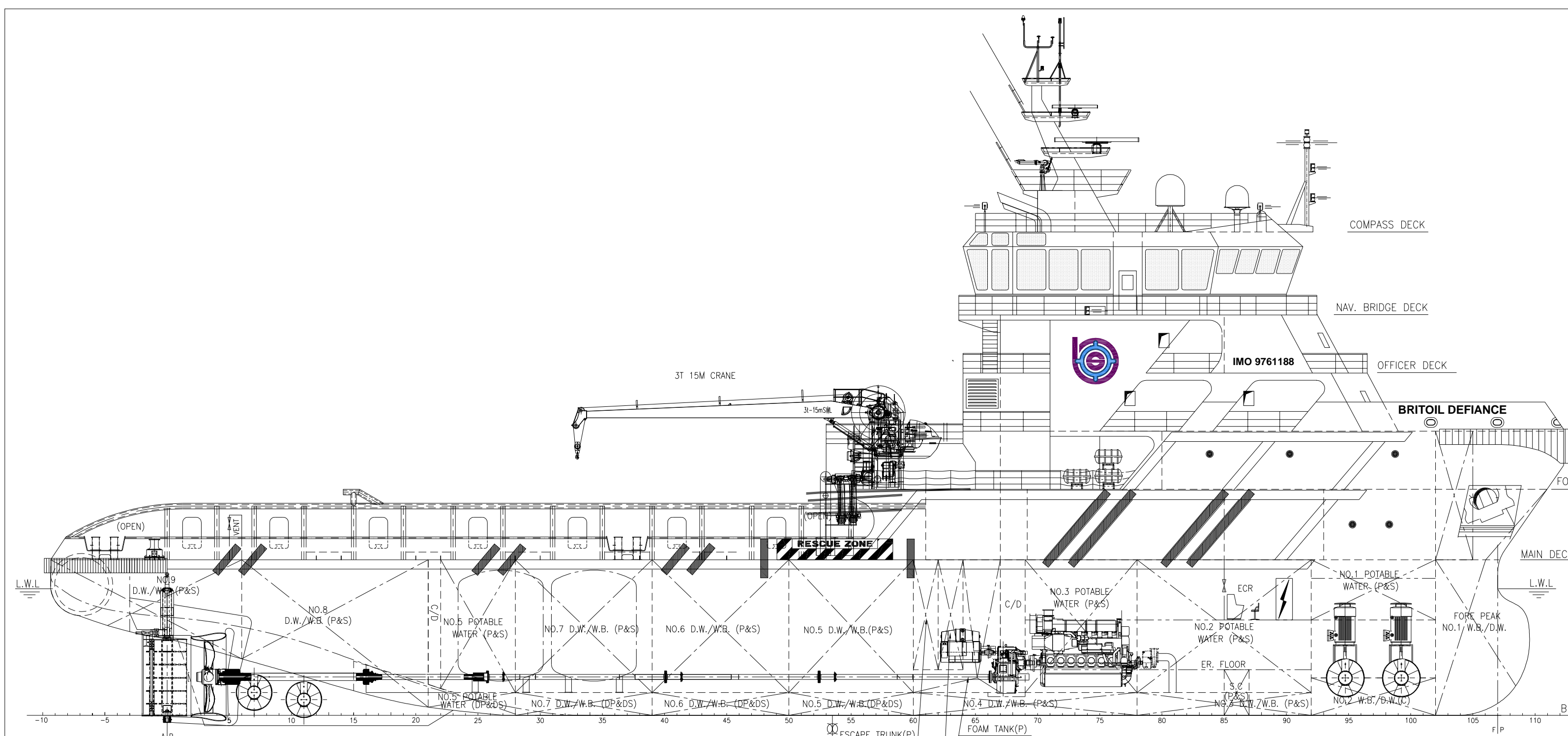
Item	Detail
Dynamic Positioning	Kongsberg DPS-2
Radar No. 1	X-Band radar
Radar No. 2	S-Band radar
GPS	GPS plotter
Echo Sounder	Navigational echo-sounder
Auto-pilot	Auto-pilot system
Gyro Compass	3 x gyro compass
Magnetic Compass	1 x magnetic compass

Communications Equipment

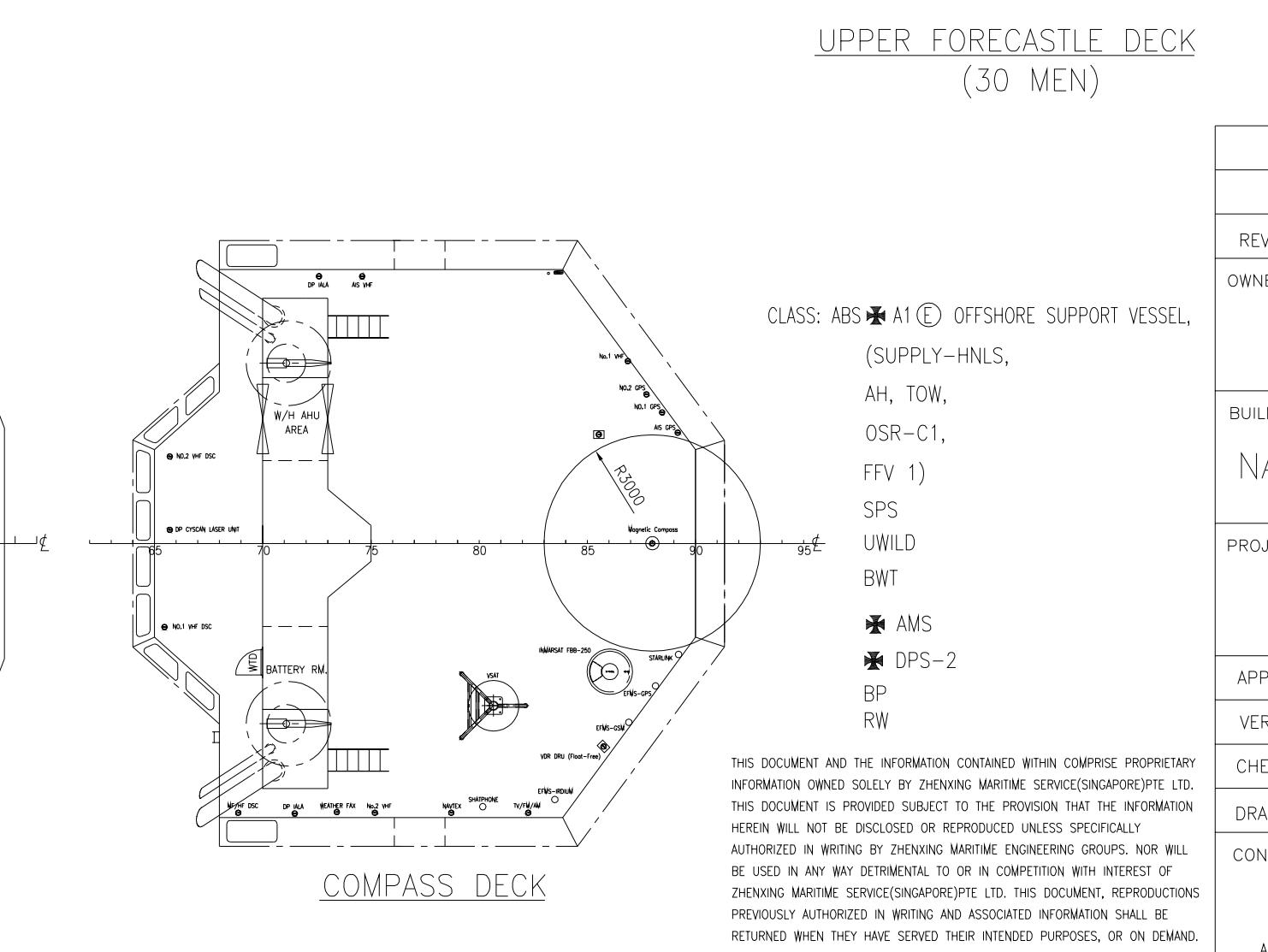
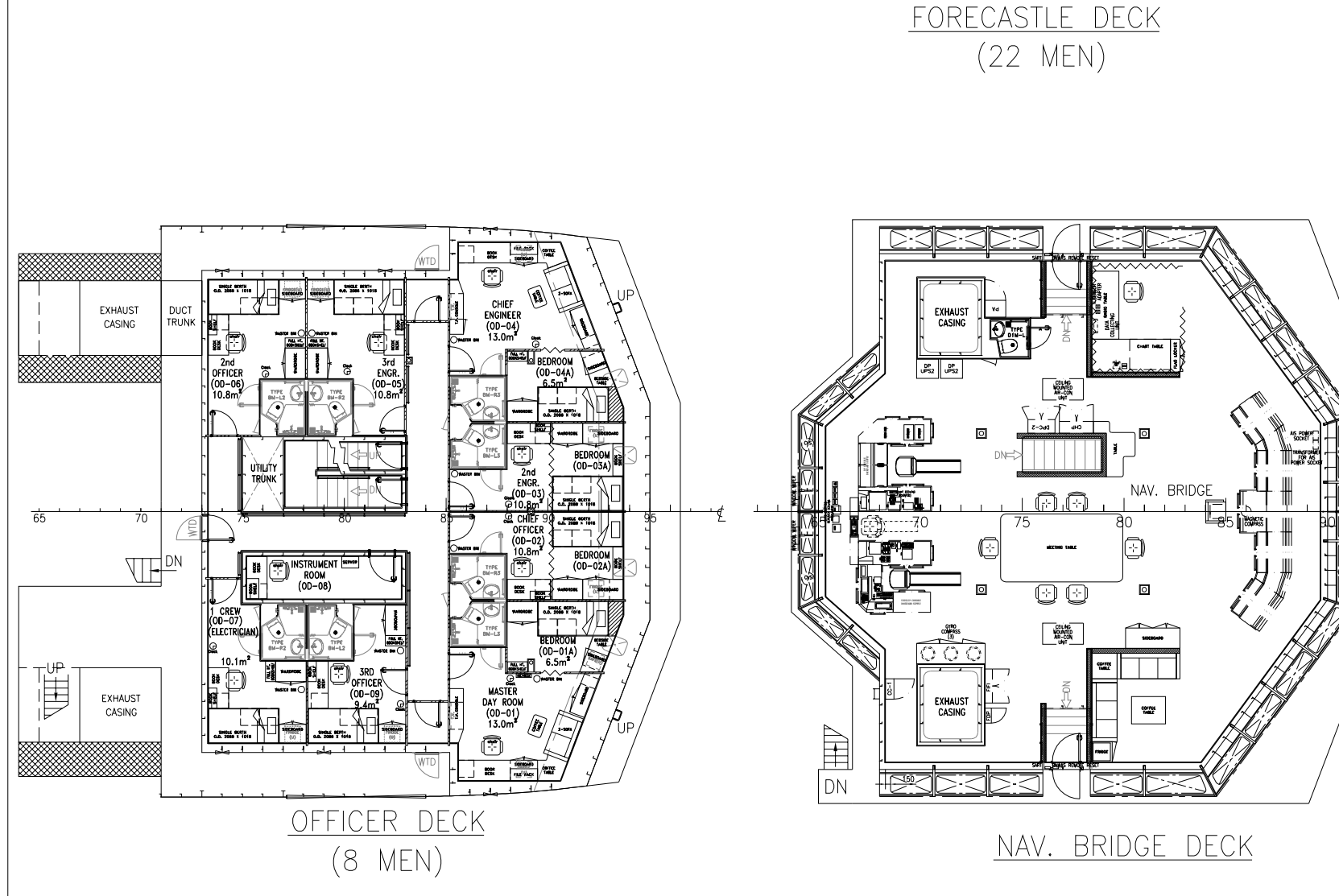
Item	Detail
HF Radio	Furuno RC-1800T
VHF Radio	Furuno FM-8800S
Portable VHF Radio	3 x McMurdo R2 GMDSS
Satellite EPIRB	McMurdo SMARTFIND E5
Navtex Receiver	Furuno NX-700A (GMDSS)
SART	2 x McMurdo S4 Rescue SART
AIS	Furuno FA-150
E-RFMS	Ascenz Marorka

Fire-fighting & Rescue

Item	Detail
Fire-fighting System	FiFi-1
FiFi Pumps	2 x 1,200 m ³ hr ⁻¹
FiFi Monitors	2 x 1,200 m ³ hr ⁻¹
Spray Booms	2 x 6 m
Rescue Boat	1 x 6-man, diesel 25 hp OBM



PRINCIPAL PARTICULARS	
LENGTH OA	73.00 M
LENGTH BP	64.20 M
BEAM MLD.	17.20 M
DEPTH MLD.	7.50 M
DRAFT DESIGNED	5.20 M
DRAFT SCANTLING	6.10 M
COMPLEMENT	60 MEN
F.O.	750 M ³
MUD/BRINE/R.O.	600 M ³
POTABLE WATER	550 M ³
WB/DW	1,000 M ³
CEMENT	230 M ³
RIG C.L.	210 M ³
DECK CARGO SPACE	500 M ²
MAIN ENGINE	3,000KW X 2
BOLLARD PULL	ABT. 110 T
TRIAL SPEED	ABT. 13 KTS
MAX DWT	ABT. 2,200 T



8	ISSUED AS PER BUILT	WJF	NOV-25-2024
7	AMENDED AS PER OWNER COMMENTS	ZF	NOV-11-2015
REV NO.	REVISION DESCRIPTION	BY	DATE
OWNER	BRITOL OFFSHORE SERVICES PTE LTD.,		
BUILDER	NANTONG TONGSHUN SHIPBUILDING & REPAIRING CO., LTD.		
PROJECT	73M ANCHOR HANDLING TUG/SUPPLY /OIL RECOVERY VESSEL BRITOL DEFIANCE		
APPROVE	LEO	DWG TITLE:	JOB NO.: P-1731
VERIFY	ZS	GENERAL ARRANGEMENT	DWG NO.: ZX-P2425-PB-ME-401
CHECKER	WSH	SCALE:	SCALE: 1:175 (A1)
DRAWER	WJF	CLASS:	CLASS: ABS
CONSULTANT	ZHENXING MARITIME SERVICE (SINGAPORE) PTE LTD 振兴海事服务(新加坡)有限公司		
ADD: 2 VENTURE DRIVE#16-32 VISION EXCHANGE SINGAPORE 608526 TEL: +65 66506795 EMAIL: Leo.Leo@zx-maritime.com			

CLASS: ABS A1 (E) OFFSHORE SUPPORT VESSEL,
(SUPPLY-HNLS,
AH, TOW,
OSR-C1,
FFV 1)
SPS
UWILD
BWT
AMS
DPS-2
BP
RW

THIS DOCUMENT AND THE INFORMATION CONTAINED WITHIN COMPRISE PROPRIETARY INFORMATION OWNED SOLELY BY ZHENXING MARITIME SERVICE(SINGAPORE) PTE LTD. THIS DOCUMENT IS PROVIDED SUBJECT TO THE PROVISION THAT THE INFORMATION HEREIN WILL NOT BE DISCLOSED OR REPRODUCED UNLESS SPECIFICALLY AUTHORIZED IN WRITING BY ZHENXING MARITIME ENGINEERING GROUPS. NOR WILL BE USED IN ANY WAY DETRIMENTAL TO OR IN COMPETITION WITH INTEREST OF ZHENXING MARITIME SERVICE(SINGAPORE) PTE LTD. THIS DOCUMENT, REPRODUCTIONS PREVIOUSLY AUTHORIZED IN WRITING AND ASSOCIATED INFORMATION SHALL BE RETURNED WHEN THEY HAVE SERVED THEIR INTENDED PURPOSES, OR ON DEMAND.