



BRITOIL DRAGON

7,000 BHP | 90 t BP | DP2 AHTS

Class Notation: ABS ~~A~~A1, Towing Vessel, Fire Fighting Vessel Class 2, Offshore Support Vessel, AH, ~~C~~, ~~A~~AMS, ~~D~~PS-2, Oil Recovery Capability Class 2

Main Particulars

Specification	Details
Flag	Tuvalu
IMO	9503081
Call Sign	T2TQ5
Built	2013
Length Overall	81.0 m
Beam Overall	16.8 m
Depth	7.5 m (moulded)
Loaded Draft	6.25 m (summer)
Gross Tonnage	3,208 t
Net Tonnage	962 t
Deadweight	3,100 t @ 6.25 m
Builder	PRM Offshore Heavy Industries Pte Ltd
Displacement	5,914 t

Machinery & Propulsion

Component	Details
Main Engines	2 x Yanmar 8EY26 (2 x 2,560 kW)
Main Generators	6 x 590 kW Caterpillar 3412
Emergency Generator	1 x 92 kW Caterpillar C4.4
Bow Thrusters	2 x Kawasaki KT-88B3, CPP 550 kW (\approx 9 t thrust ach)
Azimuth Thrusters	2 x Kawasaki Rexpeller KST-220 ZC/B, CPP (kort nozzle)

Deck & Anchor Handling Equipment

Component	Details
Winch	Rolls-Royce Brattvaag SL150W-2T (double-drum waterfall)
Stall / Brake	160 t / 225 t
Tow Drum	1,200 m x 52 mm wire
AH Drum	1,200 m x 52 mm wire
Storage Reels	3 x 1,800 m x 52 mm wire
Stern Roller	5.0 m x 2.5 m, SWL 300t
Tugger Winches	2 x 10 t
Capstans	2 x 5 t
Shark Jaws	1 x TriplexH-200, SWL 200 t
Towing Pins	1 x Triplex S-200, SWL 200 t
Anchor Windlass	13 t @ 0–12 min ⁻¹
Anchors	2 x 2,500 kg, HHP
Anchor Chains	2 x 17 shackles, \varnothing 42 mm
Deck Crane	Fixed crane, SWL 3 t @ 8 m

Accommodation

Accommodation	Details
1-Berth Cabins	2
2-Berth Cabins	4
4-Berth Cabins	14
Total Berths	66

Performance

Performance	Speed
Maximum	12 kts
Economical	10 kts
<i>subject to weather and operating conditions</i>	

Tank Capacities

Tank	Capacity	Discharge Rate
Fuel Oil	1,264 m ³ (90%)	2 x 150 m ³ hr ⁻¹ @ 80 m
Cargo Fuel Oil	830 m ³ (shared with base oil)	—
Potable Water	370 m ³	2 x 100 m ³ hr ⁻¹ @ 80 m
Drill Water	1,015 m ³ (shared with oil-recovery)	2 x 150 m ³ hr ⁻¹ @ 80 m
Base Oil	376 m ³ (shared with cargo fuel)	—
Mud	605 m ³ (shared with brine)	2 x 100 m ³ hr ⁻¹ @ 80 m
Brine	605 m ³ (shared with mud)	2 x 150 m ³ hr ⁻¹ @ 80 m
Dry Bulk	339.6 m ³ (in 6 tanks)	40 m ³ hr ⁻¹
Oil Recovery	1,515 m ³ (shared with drill water)	—

Cargo Deck

Cargo Deck	Details
Clear Deck Area	650 m ²
Deck Dimensions	45.0 m x 14.0 m
Deck Capacity	1,200 t
Deck Strength	5.0 t m ⁻²
Reefer Points	6 x 440 V & 2 x 220 V

Electronics & Dynamic Positioning (DP)

System	Details
Dynamic Positioning	Class 2, L3 NMS6000
DP References	2 x Veripos LD5 DGPS, 1 x Cyscan, 1 x Radscan
VRU	2 sets
Independent Joystick	Kawasaki KICS

Special Equipment

Equipment	Details
FiFi Class	FiFi 2
FiFi Pumps	2 x 1,800 m ³ hr ⁻¹ + 1 x 3,600 m ³ hr ⁻¹
FiFi Monitors	4 x 1,800 m ³ hr ⁻¹ (water/foam)
Spray Booms	2 x 6 m
Dispersant / Foam	29 m ³ each

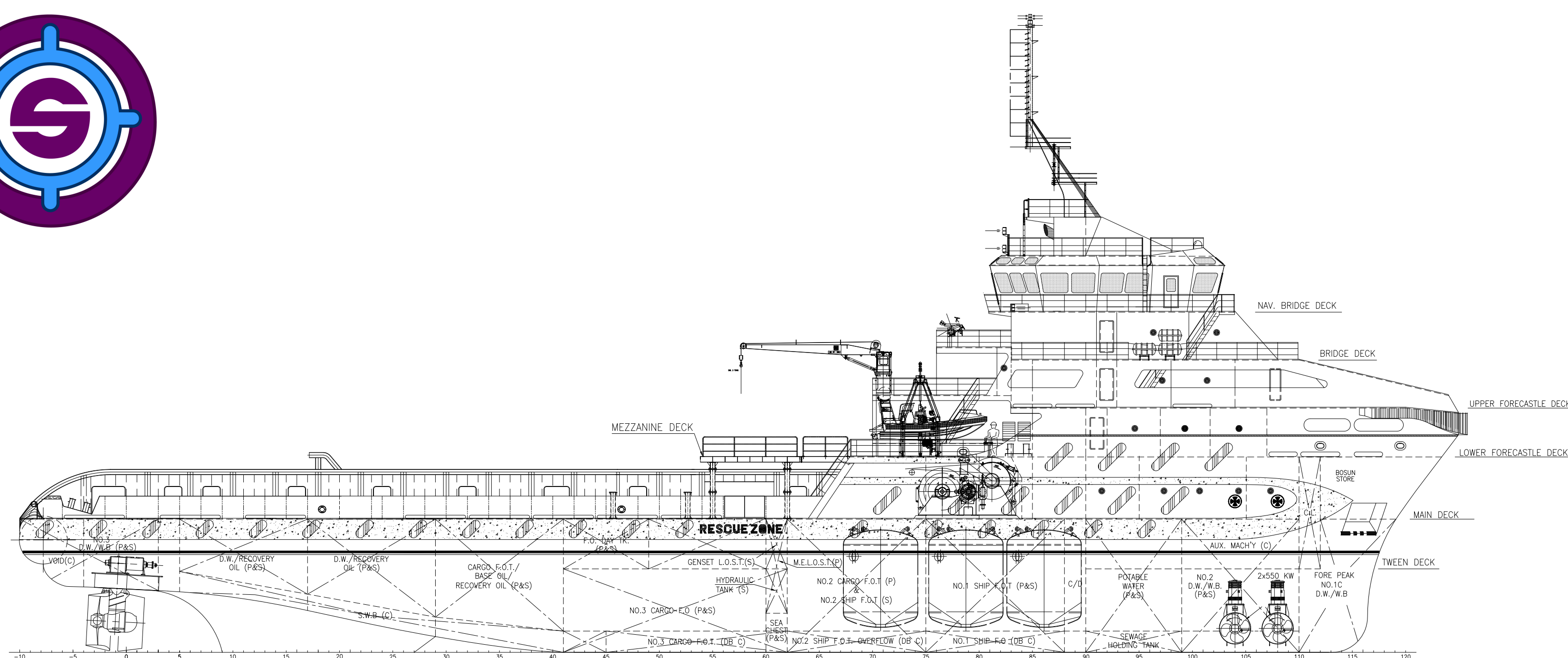
Rescue & Safety

Equipment	Details
Fast Rescue Craft	1 x 10-man rigid-hull water-jet FRC, 218 HP, 20 kts
Life-rafts	8 x 25-man
Life Buoys	12
Life Jackets	90
H ₂ S Detection	Fixed system fitted

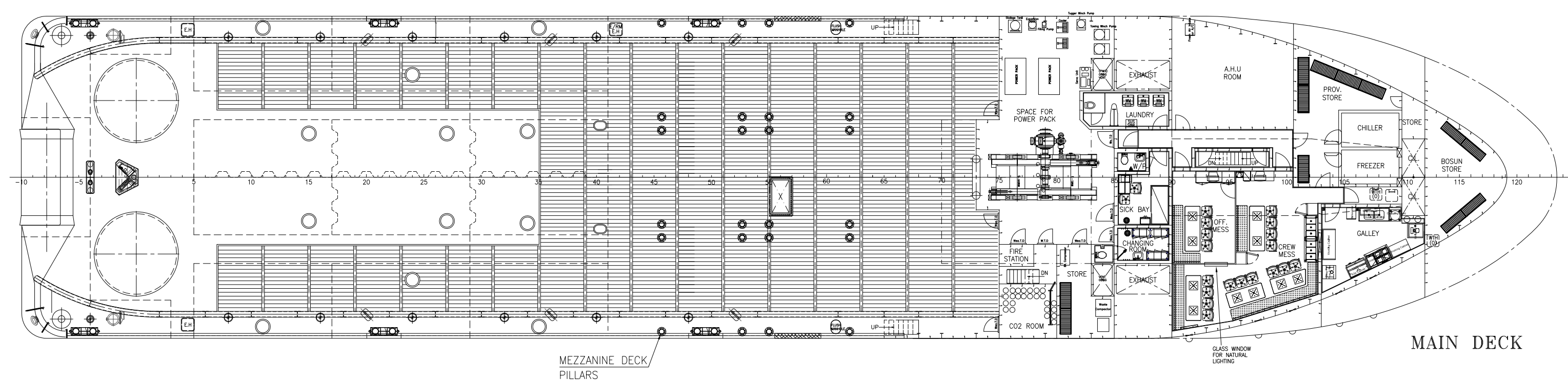
rev 1.0 - 25 June 2025

100G Pasir Panjang Rd
#05-01/02 Interlocal Centre
Singapore 118523
www.britoil.com.sg

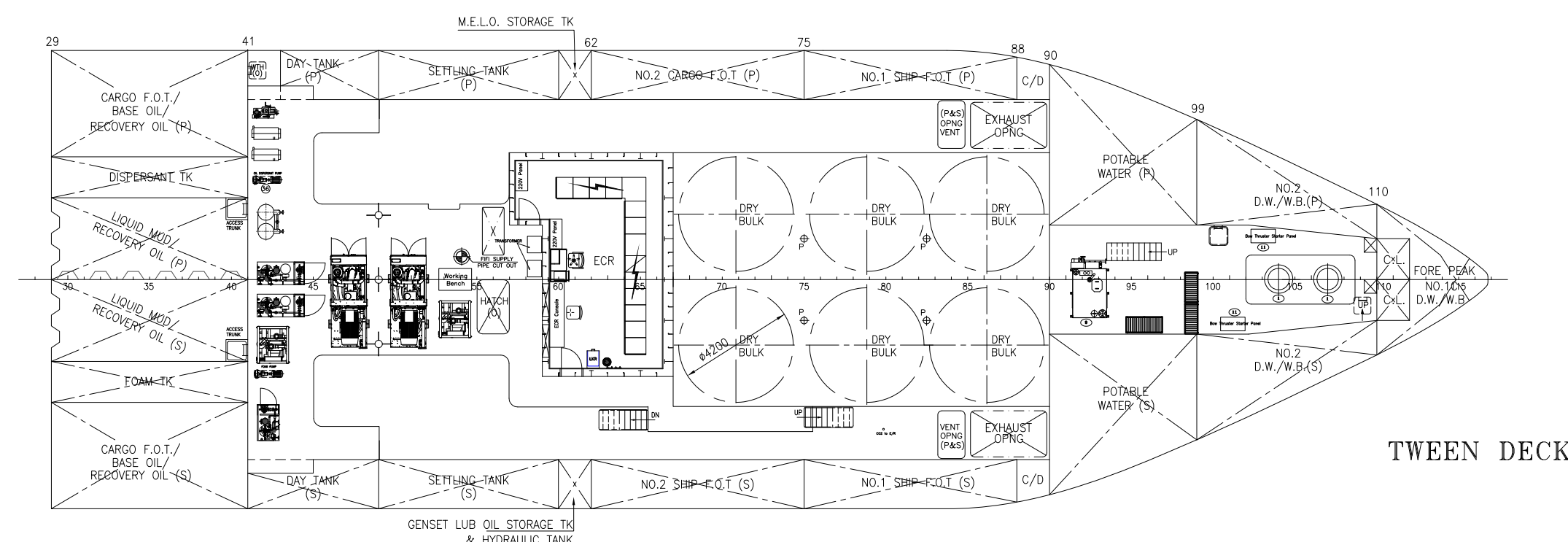
Details given in good faith but not guaranteed. Owners reserve the right to amend specifications without notification.



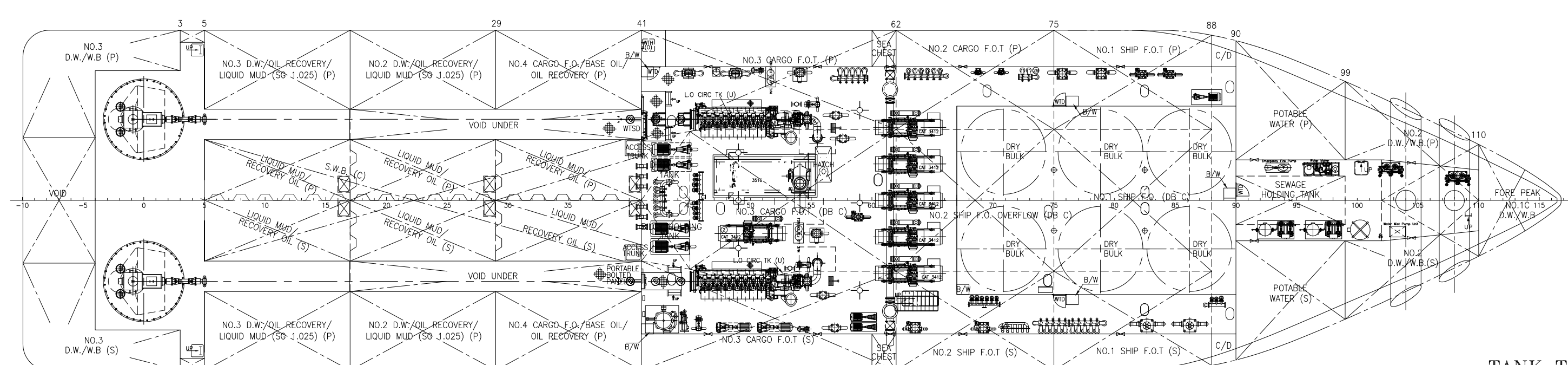
PROFILE



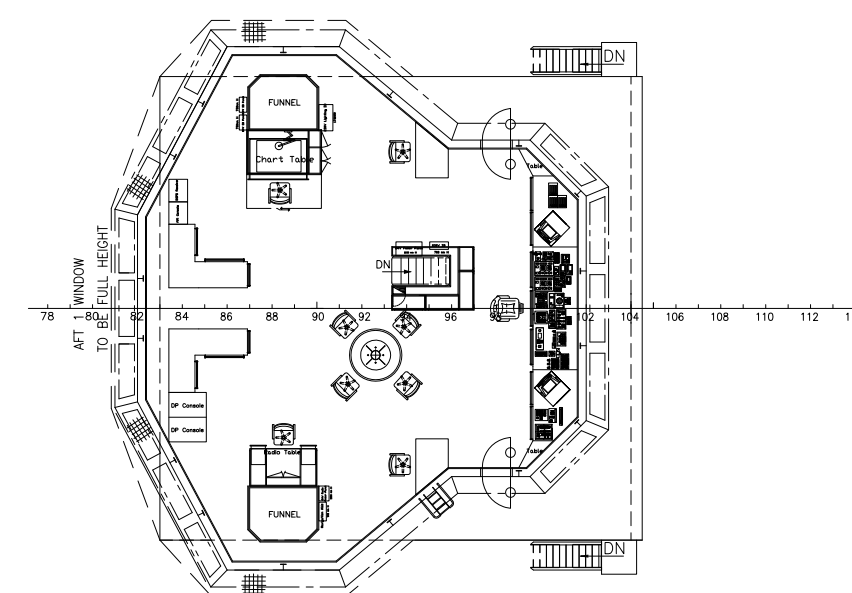
MAIN DECK



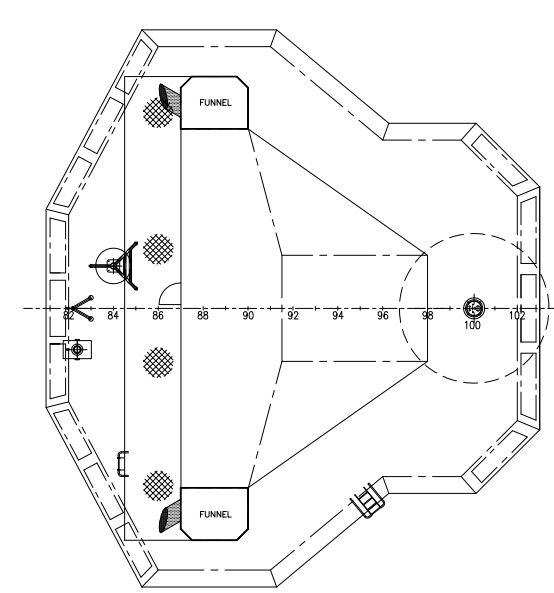
TWEEN DECK



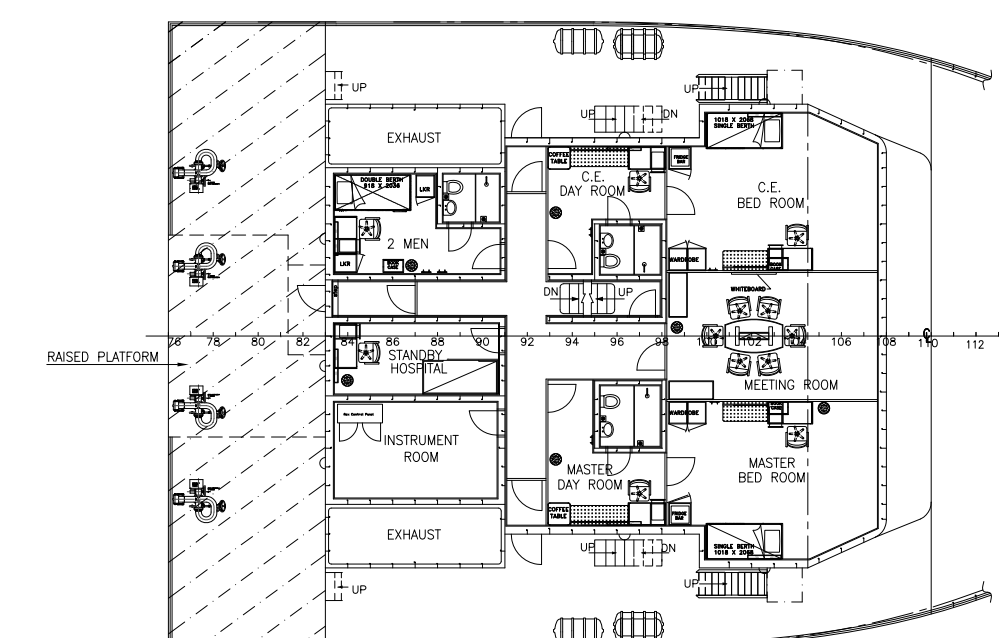
TANK TOP



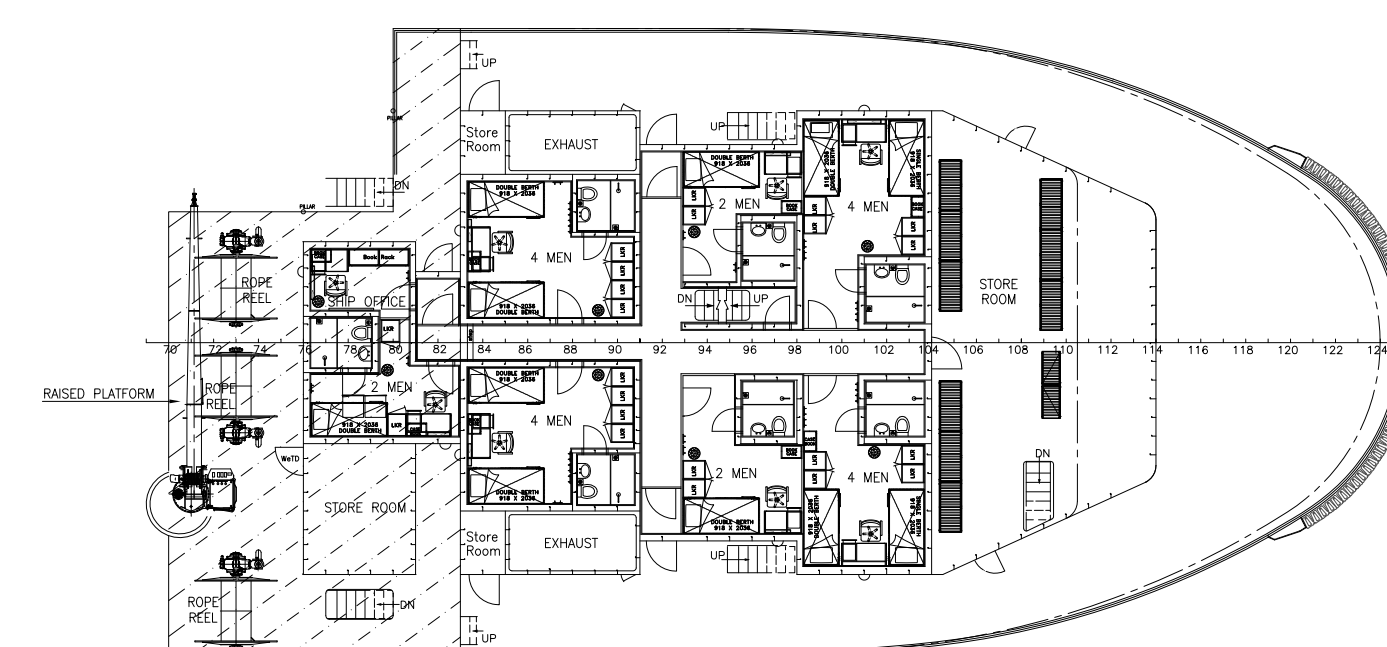
NAV. BRIDGE DECK



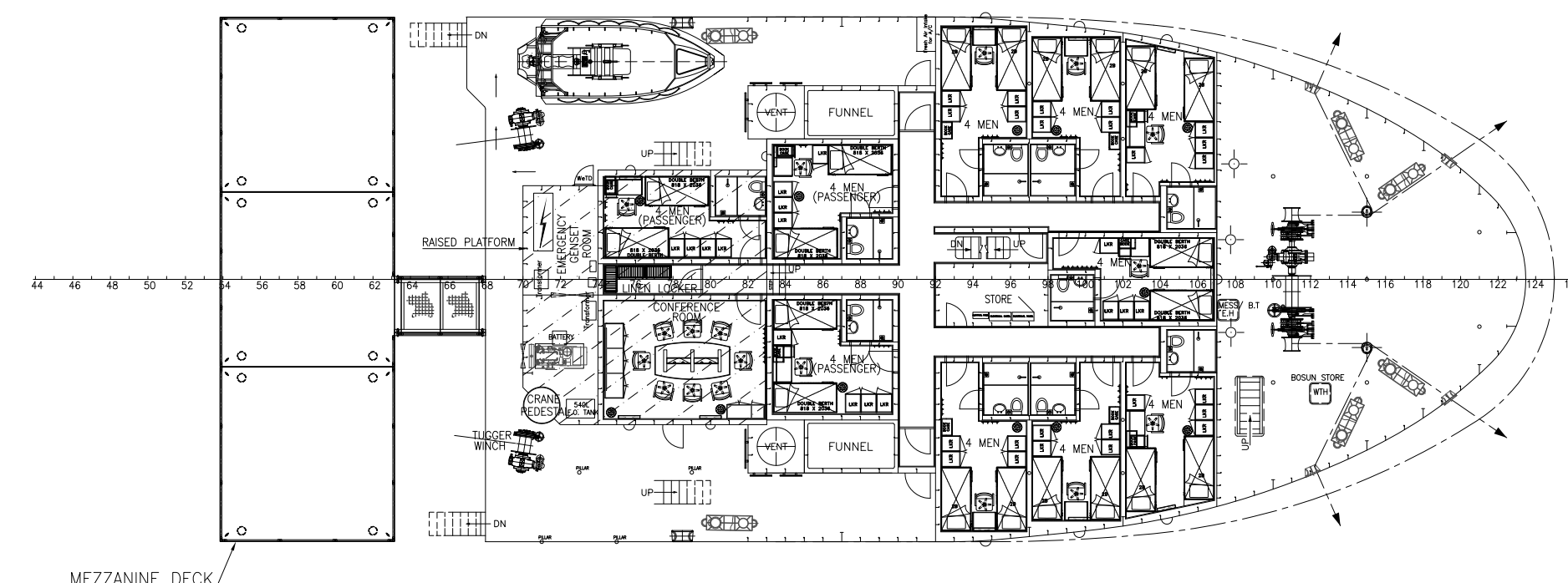
WHEELHOUSE TOP



BRIDGE DECK	
1 x 2 MEN	= 2 MEN
2 x 1 MEN	= 2 MEN
TOTAL	= 4 MEN



UPPER FORECASTLE DECK	
4 x 4 MEN	= 16 MEN
3 x 2 MEN	= 6 MEN
TOTAL	= 22 MEN



LOWER FORECASTLE DECK
10 x 4 MEN = 40 MEN

BRIT OIL DRAGON
7,000 BHP | 90 t BP | DP2 AHTS