



BRITTOIL JUSTICE

DP2 | PSV

Class Notation: I + HULL + MACH, Supply Vessel-Oil Product, Fire-Fighting ship 1, Water spraying, Unrestricted Navigation, + AUT-UMS, + DYNAPOS AM/AT R, SDS, HEAVYCARGO (DECK, 50 KN/m²), CLEANSHIP, LHNS FP>60

Main Particulars

Vessel Name	BRITTOIL JUSTICE
Flag	Singapore
IMO Number	9759173
Call Sign	
Year Built	2023
Maximum Speed	Min. 12.5 kts

Dimensions

Overall Length	71.5 m
Length between Perpendiculars	15.0 m
Breadth Moulded	15.0 m
Depth from Main Deck	7.1 m
Max Draught	6.0 m
Design Draught	5.0 m
Freeboard at Max Draught	1.1 m
Clear Deck Space	610 m ²

Capacities & Tonnage

Fuel Oil Cargo	635 MT (90%)
Fresh Water	480 m ³
Mud/Brine	750 m ³
Ballast/Drill Water	1200 m ³
Dry Bulk	220 m ³
Deck Strength	5 t/m ²
Deadweight at Max Draught	3000 t

Discharge Rates

Fuel Oil Cargo Pump	2 x 100 m ³ /h – 10 bar
Fresh Water Pump	100 m ³ /h – 10 bar
Mud/Brine Pump	2 x 100 m ³ /h – 18 bar
Ballast/Drill Water Pump	100 m ³ /h – 10 bar

Dynamic Positioning System

DP Class	2
System	1 x Kongsberg or GE or MT or equal
Software modes	Joystick Mode Mixed Joystick / Auto Mode Auto Heading Mode Auto Position Mode
References	2 x wind sensors 2 x motion reference units 2 x Differential Position System DPS 110 1 x Radius 1000

Fire Fighting

Fire Fighting Class	Class 1
Pumps	1 x Fi-Fi pump
Monitors	2 x with el. Remote control & backup

Accommodation

1-man Cabins	8
2-man Cabins	8
Total Accommodation	24 persons

Rescue

Life Rafts	4 x 25 person
Rescue Boat Davit	1 x swivel-type davit

Navigation Equipment

Radar	1 x S-band ARPA radar 1 x X-band ARPA radar
DECCA, LORAN, OMEGA, Radio Direction Finder	1 x DGPS for navigation 1 x DGPS for DP-system

Communication Equipment

Main	1 x GMDSS-A3 Installation
Radio Plant (GMDSS)	1 x MF/HF SSB Simplex Radio Station 1 x Navtex Receiver 2 x GMDSS alarm panels 1 x Long Range Identification Tracking

Machinery

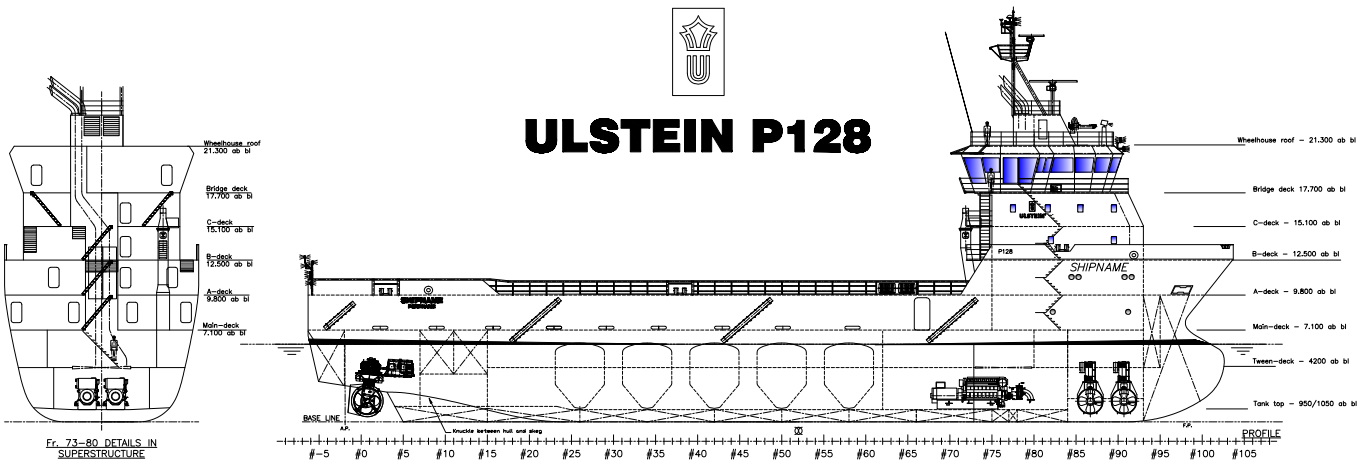
Main Generators	2 x 1,400 kW/900 rpm, 4-stroke turbo charged type Wartsila
Auxiliary Generators	
Emergency Generator	1 x 185 kW/1800 rpm Lindenberg/ Germany
Azimuth Thrusters	2 x FPP 1,100 kW/0-1800 rpm Berg
Bow Thrusters	

Deck Machinery

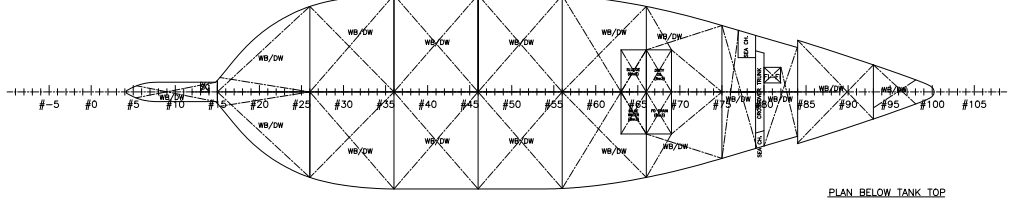
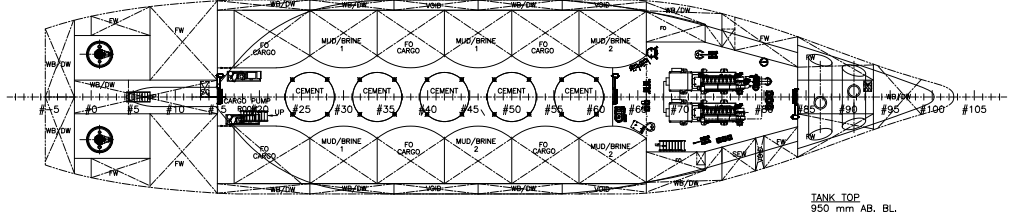
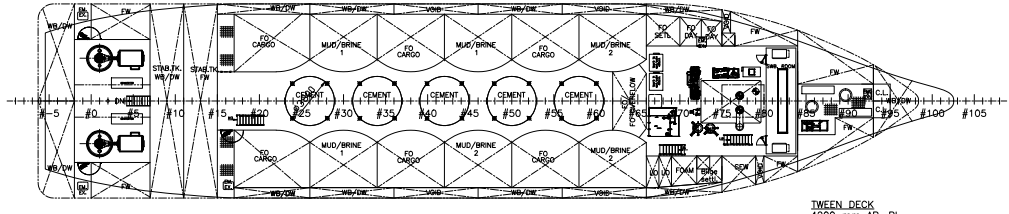
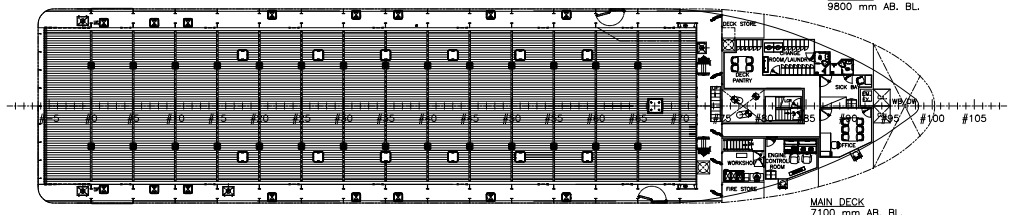
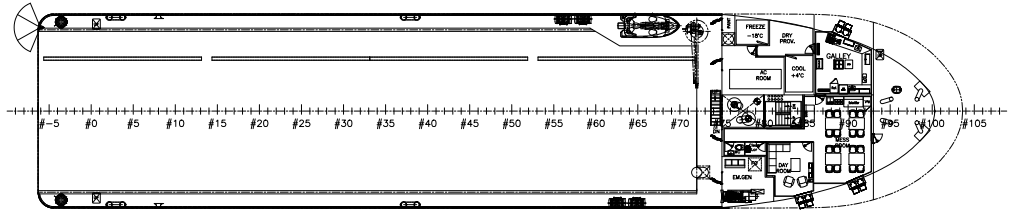
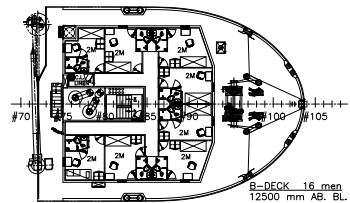
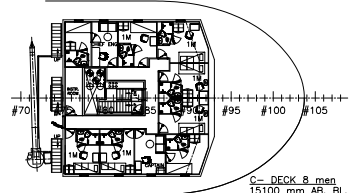
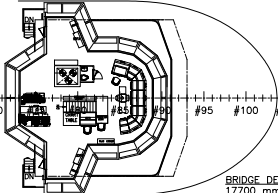
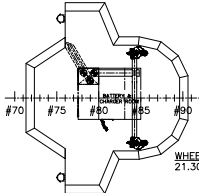
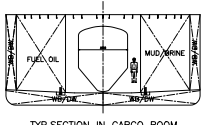
Deck Cranes	1 x electrohydraulic, fixed boom and single wire; Haitai/China
Tugger Winches	2 x 8 t; Macgregor
Windlass/Mooring Winch	1 x double hydraulic; Macgregor
Chain Stoppers	2 x roller type w/ lashing screw; Macgregor
Capstans	2 x hydraulic capstans; Macgregor



ULSTEIN P128



Fr. 73-80 DETAILS IN SUPERSTRUCTURE



PRINCIPAL DIMENSIONS:
 APPROX.: 71,5 m
 L.P.P.: 65,9 m
 L.F.: 68,7 m
 BREADTH MOULDED: 15,0 m
 DEPTH TO MAIN DECK: 7,1 m
 MAX. DRAUGHT: 6,0 m

GENERAL ARRANGEMENT		ULSTEIN P128	
NO.	DESCRIPTION	NO.	DESCRIPTION
1	ULSTEIN	1	ULSTEIN
2	ULSTEIN P128	2	ULSTEIN P128
3	ULSTEIN P128	3	ULSTEIN P128
4	ULSTEIN P128	4	ULSTEIN P128
5	ULSTEIN P128	5	ULSTEIN P128
6	ULSTEIN P128	6	ULSTEIN P128
7	ULSTEIN P128	7	ULSTEIN P128
8	ULSTEIN P128	8	ULSTEIN P128
9	ULSTEIN P128	9	ULSTEIN P128
10	ULSTEIN P128	10	ULSTEIN P128

ULSTEIN P128
 1100894 - 101 - 100 - 01