



BRITOIL PROGRESS

DWT 3,279 t | DECK 680 m² | DP2 PSV

Class Notation: ABS A1, Offshore Support Vessel (FFV 1), AMS, ACCU, DPS-2

Main Particulars

Particular	Detail
Flag	Tuvalu
IMO	9421788
Call Sign	T2KC6
Year Built	2009
Shipyard	COCHIN SHIPYARD LTD.
Length Overall	73.6 m
Length B.P.	67.62 m
Depth (Molded)	7 m
Breadth (Moulded)	16 m
Gross Tonnage	2,177 t
Net Tonnage	1,044 t
Deadweight	3,279 t

Machinery & Propulsion

Component	Specification
Main Engines	2 × Ulstein Bergen KRMB9 2,005 kW
Main Generators	2 × 1,800 kVA (shaft generators)
Aux. Generators	2 × 310 kVA Volvo Penta
Propellers	2 × 4 Blade ø2,900 mm (CPP)
Rudders	2 × Rolls Royce High Lift Rudder
Bow Thrusters	2 × 600 kW Kamera-Ulstein Tunnel
Stern Thrusters	2 × 500 kW Kamera-Ulstein Tunnel

Cargo Deck

Parameter	Value
Clear Deck Area	680 m ²
Deck Dimensions	1600 t
Deck Strength	5 t m ⁻²

Deck & Mooring Equipment

Equipment	Rating / Size
Tugger Winches	2 × 10 t Brattvaag
Anchors	2 × 2,400 kg Spek Type
Anchor Chain	2 × 8 shots ø38 mm stud link

Deck Crane

Crane	Rating / Reach
Deck Crane	1 x Dognam 3 t @ 16 m

Accommodation

Item	Capacity / Detail
Single Cabins	10
4-man Cabins	3
Total Accommodation	22
Crew Capacity	12
Passengers	10

Performance

Mode	Speed	MGO Consumption
Maximum	14.5 kn	22.9 m ³ d ⁻¹
Transit	12 kn	16 m ³ d ⁻¹
Economy	10 kn	11.5 m ³ d ⁻¹
DP Mode	—	6.2 m ³ d ⁻¹
DP / Standby	—	4.3 m ³ d ⁻¹
In Port	—	0.9 m ³ d ⁻¹

*subject to actual weather and operating conditions

Tank Capacities & Discharge Rates

Tank / Medium	Capacity	Discharge Rate
Fuel Oil	1,045 m ³	200 m ³ h ⁻¹
Fresh Water	918 m ³	200 m ³ h ⁻¹
Drill Water	880 m ³	200 m ³ h ⁻¹
Water Ballast	880 m ³	200 m ³ h ⁻¹
Liquid Mud	970 m ³	75 m ³ h ⁻¹
Base Oil	200 m ³	150 m ³ h ⁻¹
Brine	390 m ³	75 m ³ h ⁻¹
Dry Bulk	315 m ³	46 m ³ min ⁻¹
Foam	5 m ³	—

Dynamic Positioning (DP) System & Navigation Equipment

Instrument	Model / Detail
DP Class	DP2
DP System	Converteam ADP
DGPS	2 × Furuno GP-150
Gyros	1 × Tokimec; 2x SG Brown Meridian
Independent Joystick	Rolls Royce POSCON joystick
Radars	1 × Furuno FAR 2837 S-Band; 1 × Furuno FAR 2117 X-Band
AIS	Furuno FA-150
Echo Sounder	JRC JFE 680

Communications Equipment

Instrument	Model / Detail
GMDSS Area	A3
VHF Radios	3 × VHF
NAVTEX	Furuno NX-700A

Fire-Fighting & Rescue

Equipment	Capacity / Rating
Fifi Class	Fire Fighting Vessel Class 1
Fire Monitors	2 × 1,200 m ³ hr ⁻¹ , electric remote control
Survival Craft	4 × 25-man Viking 25DK
Rescue Boat	FRC 6-man NorMar 425 w/ 25hp Outboard

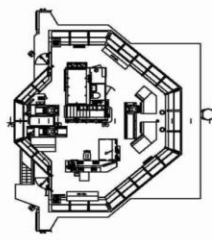
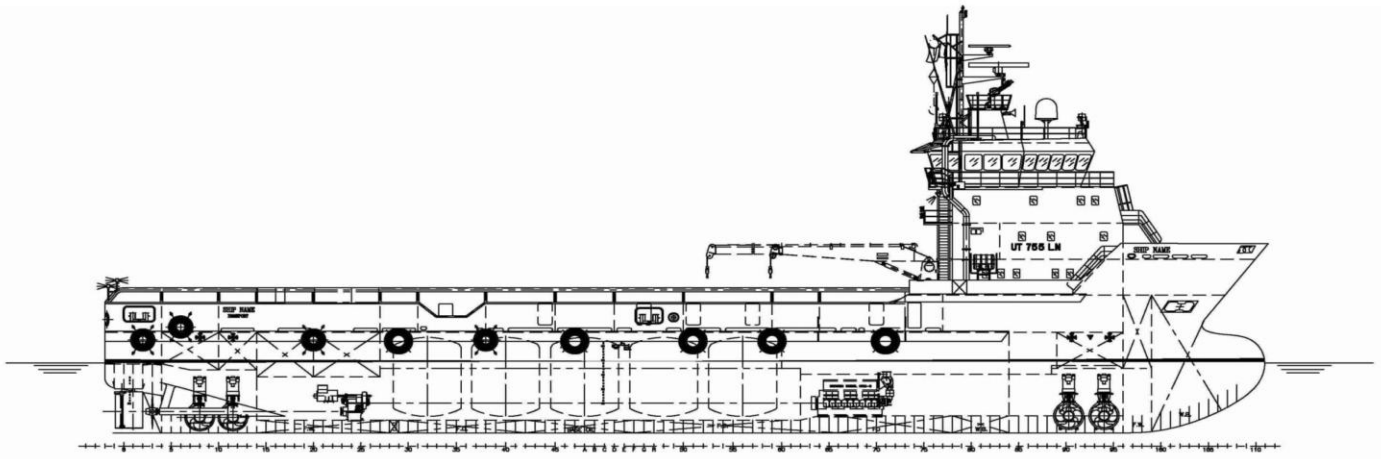
Details given in good faith but not guaranteed. Owners reserve the right to amend specifications without notification.

Britoil Offshore Services Pte Ltd • 100G Pasir Panjang Road, #05-01/02 Interlocal Centre, Singapore 118523 • www.britoil.com.sg

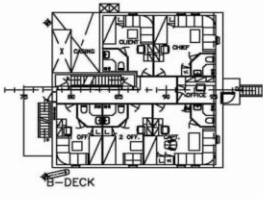
rev 1.0 - 29 April 2026

BRITOil PROGRESS

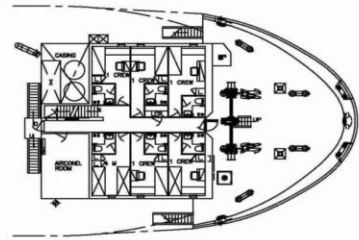
DWT 3,279 t | DECK 680 m² | DP2 PSV



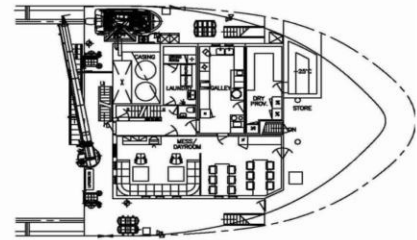
BRIDGE DECK



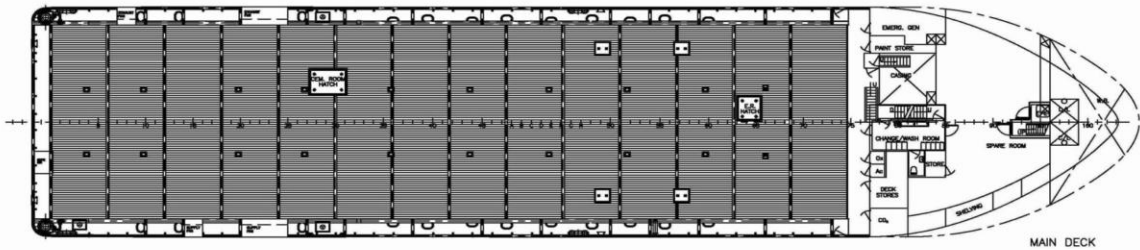
B-DECK



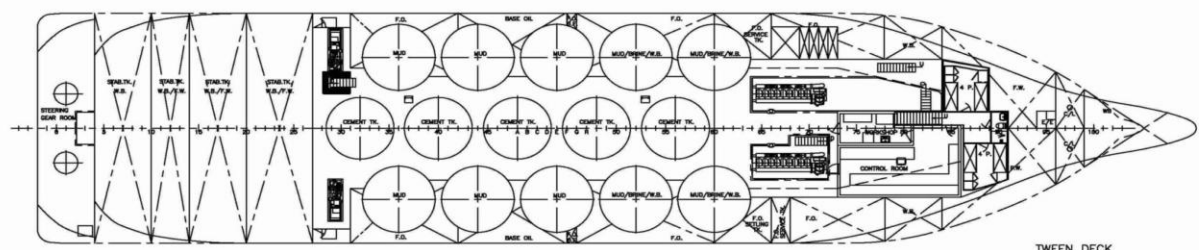
A-DECK



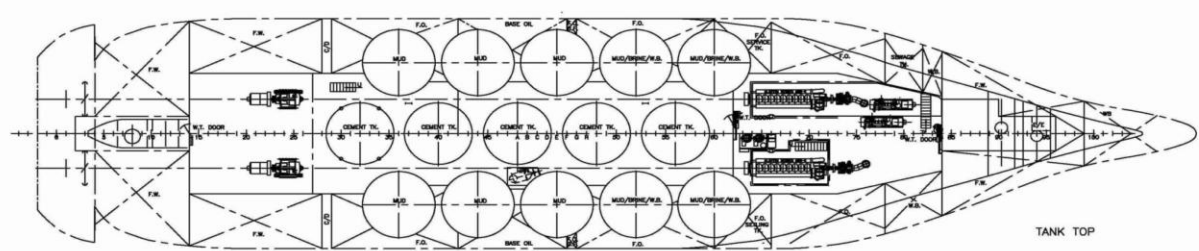
FORECASTLE DECK



MAIN DECK



TWEEN DECK



TANK TOP